



# **THE NEWSLETTER**

**Lake Okareka  
Community Association (Inc.)**

**October, November & December 2015**

**[www.lakeokareka.org](http://www.lakeokareka.org)**

# The Newsletter

of the

Lake Okareka Community Association (LOCA)

## Issue 4, December 2015

**Issue dates:** 20 March, 20 June, 20 September, 20 December

**Copies printed:** 300

**Deadline for copy:** 1st of the month of issue

**Advertising rates per issue:** Quarter page \$35, half \$50, full \$90

**Classified adverts:** Free for 1st listing/free items (4 lines)

**Editor:** Maria Haines - phone: 3628 960 email: mariaanddean@xtra.co.nz

### **Your Committee:**

**Geoff Palmer**      **Chairman**      **3628 379** (Chair Rotorua Lakes Community Board)

**Sandra Goodwin**      **Secretary**      **3628 865**

**Bryan Walford**      **Treasurer**      **3628 224**

**Debbie Surtees**      **3628 760**      **Marcel Van Leeuwen**      **3628 468**

**Mike Vincent**      **3628 376**      **Carol Christian-Price**      **3628 702**

**Matt Harvey**      **3628 971**      **Katy Hodgson**      **3628 857**

Front cover: Nativity play from Lake Okareka Pre School held on Friday 27 November. Father Christmas made a special appearance. Please see pages 36 and 37 for more pictures from the evening. Thanks to Mike Vincent for the photos.



### **DISCLAIMER STATEMENT**

The views and opinions expressed in this Newsletter are not necessarily those of the LOCA Committee.

## CHAIRMAN'S UPDATE—DECEMBER 2015



Greetings from the LOCA committee and our best wishes to all for a great Christmas and New Year.

**Upgrade of the Outlet** This was completed earlier this year with replacement of the old piping and installation of a new control valve. There has also been a pro-active improvement from Council staff to better control the lake

level taking into account seasonal weather patterns and water evaporation. Hopefully this will result in a stable water level over summer.

**Visitors to the Lakes** There has been an increase in tourists and visitors to Rotorua and the Lakes in recent months and we can expect traffic congestion at times over the holidays. Many of the vehicles coming to the lakes are campervans and the like driven by tourists unfamiliar with the area. We can also expect the usual influx of boaties and picnickers on Wellington and Auckland Anniversary weekends resulting from events at the Blue Lake. So please drive with care.

**Walking track from Boyes beach to DOC camp** Volunteer work on this project is continuing and a builder's contract for the board walks and bridges is being finalized. Completion of this stage of the round the lake walkway will be our major project in 2016. The contract will be over \$100,000 with \$85,000 coming from trusts and the balance from camp revenue. The volunteer contribution has been significant over recent years and a very special thank you to all who are involved, in particular Mike and Sandra Goodwin and Brian Law.

**Management of DOC camp and Boyes Beach** LOCA has now been managing the DOC camp for three years and the Boyes Beach overnight campers for one year. We have a roster system of volunteers that works well and the net revenue we receive is significant. At this stage the priority is funding the round the lake walkway and also working with RLC and DOC on upgrades to parking areas, improvements to toilets and the recycling facility at Tarawera etc.

**Public Litter Bin Review** Council's review of Waste options is well underway and it is pleasing to note that special attention is being given to the requirements at the lake front reserves at Tarawera, Tikitapu and Okareka. Aesthetically pleasing bins and recycling in key locations is a priority. Final decisions are expected at the end of March next year.

**Lake Okareka Pre School** It is pleasing to note the Pre School continues to be well patronized and they recently had another successful end of year concert together with the Salvation Army band, Father Christmas and a picnic on the adjacent property of Robin and Karin Trewin. Special thanks to Robin and Karin and the teachers "A" team, Debbie, Lesley and Davina.

**Cell Phone Coverage** At long last cell phone coverage of Tarawera, Tikitapu and Okareka has now been confirmed and the application from the Vodafone/

Chorus consortium is with Council. The consent is expected shortly and we should have coverage by the middle of 2016.

**Lake Okareka Water Quality** This is currently under review and a monitoring report is due from the University of Waikato looking at how the completed interventions for nutrient reduction in the catchment, e.g. reticulated sewerage have impacted on water quality. The water quality has remained stable in recent years but has not met the 3.0 TLI target for the lake. Further information will be available in the New Year and we are hoping to have a presentation from the University/Regional Council staff at our AGM which is being held at the Okareka Hall on Sunday 31 January at 10am.

**Rotorua Lakes Community Board** Included in this Newsletter (page 24) is a submission made recently to Council on its proposed Recreation and Events strategy for Rotorua. We feel it is important for the lakes communities to be represented when events are being considered that involve lake/road closures and traffic congestion etc that could impact on lake residents. The three year term for both elected Councillors and the Community Board members ends next October and changes are likely to the Boards catchment (include Hamurana) and delegations from Council.

**OKAREKA** is a special place to live and holiday and this is enhanced by all the volunteers who make a contribution in so many ways either as individuals, team members or lobby on our behalf when required. I also want to acknowledge the support I receive from the LOCA committee and make special mention of Maria our Newsletter editor. Thank You. Take care and look after one another.

Geoff Palmer



## WHATEVER YOUR PROPERTY NEEDS ARE - WITH BAYLEYS IT'S MADE POSSIBLE.

Need a bigger garden? Time to sell the family home? Or perhaps you're looking for an investment property? It's a world of possibilities out there, so it's great to know that Bayleys can provide you with the market knowledge, knowhow and support to get the result you want.

FIND OUT HOW BAYLEYS MAKES IT POSSIBLE AT [BAYLEYS.CO.NZ](http://BAYLEYS.CO.NZ)  
 Jenny Donne - Your Lakes Specialist - D: 07 349 5356 or M: 027 385 0566 or E: [jenny.donne@bayleys.co.nz](mailto:jenny.donne@bayleys.co.nz)

MEMBER REALITY LIMITED. LICENSED UNDER THE REAA 2008

A WORLD OF POSSIBILITIES **BAYLEYS**



## LAKE OKAREKA HORNWORT SITUATION IMPROVING?

Dive monitoring in Lake Ōkāreka for the aquatic pest plant, hornwort, was completed during the week 9th – 13th November. Conditions for the monitoring were calm with good visibility in the lake. Three areas of the lake were checked with focus given to Acacia Bay boat ramp, the weed cordon and Boyes Beach. These areas were originally where the main hornwort infestations were located. For this monitoring round, no hornwort plants or fragments were found. As no hornwort was evident and there was no growth of the oxygen aquatic weeds *Lagarosiphon major* and *Egeria densa* in the weed cordon area, no aquatic weed spraying is planned for Lake Ōkāreka this year.

Further monitoring of Lake Ōkāreka is planned for April 2016. Budget allocated by LINZ for the control of aquatic pest plants has been put aside, should any infestations become apparent and require control.

Native aquatic plants have been steadily self-regenerating in areas of the lake previously treated with herbicide to remove pest plants. The native plants appear to be growing from seeds that were dormant in the lake. Their regeneration is having a positive effect on aquatic pest plant control by limiting pest plants from re-establishing.

Help keep hornwort and other aquatic pests out of the lake: always check your trailer and anchor well and chain for any aquatic plant fragments before you enter the lake and when you exit. Remove any plant fragments that you pull up with your anchor and chain straight away or at the boat ramp before you head home. Find out more about aquatic pests and Bay of Plenty Regional Council's work to manage them at [www.boprc.govt.nz/aquaticpests](http://www.boprc.govt.nz/aquaticpests).

Hamish Lass, Land Management Officer - Biosecurity (Terrestrial and Aquatic pests) Bay of Plenty Regional Council, Rotorua, New Zealand Phone: 0800 884 881 x7580 Web: [www.boprc.govt.nz](http://www.boprc.govt.nz) Email: [Hamish.Lass@boprc.govt.nz](mailto:Hamish.Lass@boprc.govt.nz)





## LAKE TARAWERA PLAYCENTRE

We had many enriching and memorable moments this year ...

- \* We celebrated the transition to school of one of our children – Briar.
- \* We welcomed baby Arden to our centre in April, whose big brother Ryker has been with us since turning one.
- \* We made good use of our glorious surroundings and generosity of our local community, a spring morning tea in a local couple's garden, planting our own plants to share in the Tarawera Community Garden, an Easter egg hunt and basket making in our own backyard, walks to the lake front for autumn leaf collecting, spring flower viewing and a quick paddle, as well as visiting the little stream just a minute's walk from our centre to view the spawning trout.
- \* We had another successful Spring Fair, thanks to the support of our families and community

We believe our centre is a magical place for both the children and the mothers who attend with them – we have such an amazing environment-bush and a lake just a moment's walk from our doorstep, a community who is in support of us, plenty of resources for our children and most importantly lots of caring people – what more could a Centre wish for.

Our Centre is wonderful because of what we as families have put into it and our children will be enriched because of what learning experiences we have created for them during each session. It is such a loving and nurturing environment where this year we have seen a growth in lifelong friendships between the children and the mums who have attended we have created such special memories this year that we will always treasure Lake Tarawera Playcentre is like our second home.

Here's to many more happy memories at Playcentre!

Vanessa, Cara, Melanie and Robyn.







**REGISTERED PROPERTY VALUERS**  
**Since 1974**

- Commercial & Industrial
- Residential (including insurance)
- Lakes
- Lifestyle & Rural

**Trinity House, 1268 Haupapa Street, Rotorua**  
**PO Box 2081**

**ph: 07 347 6001 email: [info@CGJ.co.nz](mailto:info@CGJ.co.nz)**

**[www.valuersrotorua.com](http://www.valuersrotorua.com)**

**Holiday home  
rentals made easy.**

*...it's all  
taken care of*



**0800 42 22 42 | [bachcare.co.nz](http://bachcare.co.nz)**





# The Lake Okareka Volunteer Rural Fire Force

Hi all

Well the summer season is almost upon us and already there have been a number of major fires around the country. Two members of the Lake Okareka Fire Force recently participated in a national deployment to the Wairarapa for a pine plantation fire. Conditions for the summer months are predicted to be increasingly volatile with the El Nino weather pattern bringing hot, dry and strong westerly winds.

With the restricted fire season (October to April) now in force, fire permits are a must at this time of the year which includes everything from incinerator fires to braziers, to bonfires, charcoal barbeques and hangis. If you have a fire permit, please phone in to notify Rotorua Lakes Council when you are going to light the fire and to check the conditions. Often, if the wind gets up and/or conditions become extremely dry, permits can be put on hold or even cancelled. If a total fire ban comes into effect any visible signs of smoke must be reported immediately via the 111 emergency system.

In early December, a combined live-fire training exercise was held one weekend with the Lake Okareka, Tarawera and West Rotoiti Rural Fire Forces at Linton Park in town. This involved co-ordination of all the crews to clear some significant slash piles from trees that had been felled at the park, and included working with helicopters and monsoon buckets.

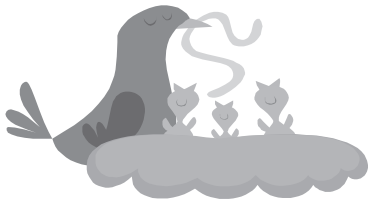
Also, at the beginning of December, an awards ceremony was held in the Rotorua Lakes Council Chambers for the Rotorua District's fire forces to recognise members for their respective years of service to the community, achievement of national qualifications in fire and rescue services, and participation of Okareka members in the Sky Tower Challenge event earlier in the year. The awards were presented by Mayor Steve Chadwick, and the ceremony was well attended by members of the three rural fire forces and their families.

The Lake Okareka Rural Fire Force wishes the community all the best for the upcoming festive season. Take care on and around the lake and forests, and while travelling around the country.

For anyone wanting to contact the Lake Okareka Rural Fire Force, please phone me on 3628874 or go to our website: [www.okarekaruralfire.com](http://www.okarekaruralfire.com).

Phil Muldoon  
**Chief Fire Officer**

TIKITAPU SCENIC RESERVE PEST CONTROL PROGRAMME




The pest control project for 2015 is now complete. The toxins of Pindone and Feratox® (cyanide) were used again this year, and the results have been satisfactory as shown on the chart below:

|      |   | Rats<br>Pre<br>Baiting | Rats<br>Post<br>Baiting | Possum/<br>Wallaby<br>Pre Baiting | Possum/<br>Wallaby<br>Post Baiting |
|------|---|------------------------|-------------------------|-----------------------------------|------------------------------------|
| 2011 | Pindone and Feratox® pellets                                | 46%                    | 2%                      | 20%                               | 12%                                |
| 2012 | no pest control-78 possums & 63 rats trapped pre monitoring | 31%                    |                         | 29%                               |                                    |
| 2013 | Pindone and Feratox® strikers                               | 70%                    | 42%                     | 21%                               | 41%                                |
| 2014 | Pindone and Feratox® pellets                                | 59%                    | 16%                     | 39%                               | 77% 78%                            |
| 2015 | Pindone and Feratox® pellets                                | 46%                    | 12%                     | 20%                               | 10%                                |

The caution period for the reserve will continue until the signs are taken down, approximately four months after the stations were cleared at the end of September.

This time is required for the complete decomposition of the carcasses and degradation of the bait. Until the signs are removed please do not touch any carcasses and remember to keep dogs out of the reserve at all times.



**Warning Poison**

**Potassium cyanide**

(will be present in bait stations from )

- DO NOT touch bait
- WATCH CHILDREN at all times
- Poison baits or carcasses are **DEADLY to DOGS**

For more information contact:

Department of Conservation  
P.O. Box 10468  
Wellington 6142

Unauthorized removal of signs or baits is an offence

The annual monitoring of bird activity in Tikitapu Reserve, to determine if bird abundance is increasing as a result of the pest management strategy, has now been completed. A comprehensive report, including comparisons with counts made in previous years will be prepared for the Bay of Plenty Regional Council which supports the pest control programme.

A monthly roster of volunteers ensured the Mistletoe and Nature walks were checked and maintained.

The Kiwi Conservation Club has again assisted with monitoring on Rat line1. This is not only a help for us but a great way for children to take part and hope-

fully develop an interest in conservation endeavours.

A big thank you to all those who have helped with the Tikitapu Pest Control Project this year. The project depends on your assistance.

New volunteers are always welcome and if anyone is interested in being involved in the pest control programme, or going on the roster to check the Nature and Mistletoe walks please let me know. Some of our older volunteers are finding they are no longer able to continue with this project and we would love to get some younger people on the volunteer list.

Frances Blakely

Phone: 3628 480

Email: [jandfblakely@gmail.com](mailto:jandfblakely@gmail.com)

## *A Touch of Elegance*

### *Beauty and Nails*



# SPRAY TANNING

*13 Summit Road, Lake Okareka*

*07 3628007 : [atouchofelegance01@gmail.com](mailto:atouchofelegance01@gmail.com)*

## DOC EMBARKING ON ROTORUA LAKES MISTLETOE RESURVEY THIS SUMMER

During December and January this summer local residents may receive a visit from a Department of Conservation (DOC) ranger undertaking a survey of the threatened green mistletoe species or pirita (*Ileostylus micranthus* and *Tupeia antarctica*) at Okareka and Tarawera as well as other Rotorua Lakes.

### ***What are mistletoes?***

Mistletoes are semi-parasitic plants that are able to produce their own energy through photosynthesis but also obtain water and nutrients from the host tree or shrub. There are nine species native to New Zealand and three of these are found in Rotorua; one species of dwarf mistletoe and two species of green mistletoe. This survey will focus on the two species of green mistletoe – *Ileostylus* and *Tupeia*.

### ***Why are we concerned about mistletoes?***

New Zealand mistletoe species are threatened. Populations have declined drastically since the early 1900's mainly due to the following factors:

- possum browse
- loss of habitat through vegetation trimming and clearance
- decline in the range and abundance of native bird species which act as pollinators and seed-dispersers

If this decline continues more local populations may become extinct.

### ***Where do they occur?***

The two species of green mistletoe or pirita – *Ileostylus micranthus* and *Tupeia antarctica*, occur throughout New Zealand, but in the Bay of Plenty are known almost exclusively in the Rotorua district. There are only a few currently known sites elsewhere in the Bay of Plenty e.g. Te Puke. Locally these species occur in regenerating shrubland, often in areas with high light levels such as forest edges and road margins. Many of the populations are on private properties or in parks where possums may be less frequent. In the Bay of Plenty *Tupeia antarctica* grows mainly on fivefinger and tree lucerne host trees. *Ileostylus micranthus* occurs mainly on mahoe and kohuhu but also on a range of exotic host species including willows around the Rotorua lakes. Populations are scattered with each population generally being highly localised with often a small number of plants present.

### ***Why is DOC resurveying mistletoe populations?***

In 2001 DOC undertook an initial survey of all green mistletoe populations around the Rotorua lakes to determine the number of plants present, health and threats, recording over 764 *Ileostylus* and 1700 *Tupeia* plants present across



more than 300 properties. In summer 2015/16 DOC plans to re-survey mistletoe populations to determine if these two species of mistletoe populations are increasing or decreasing in the Rotorua lakes area. This will provide information on the threat status of the species in Rotorua and wider BOP and identify local populations that maybe under significant threat. It also aims to educate and inform landowners who may have mistletoe plants on their properties as many are unaware that they may have plants present. Most of the population of green mistletoes in the Rotorua lakes occurs on private land and the future of these threatened species in Rotorua District depends largely on private landowners.

### ***YOU CAN HELP***

Please do not pick mistletoe plants – New Zealand species take many years to replace lost branches. If you are within the known range of green mistletoe plants at Okareka or Tarawera (Spencer Rd) expect a visit from a DOC ranger this summer. If you know of mistletoe plants on your property please point them out when ranger visits or contact DOC below. If the DOC ranger pays you a visit they will ask if you would mind if they surveyed your property for any mistletoe plants. This is entirely up to you and DOC will not be surveying any properties without landowner permission.

### **What do I do if mistletoe plants are found on my property?**

The DOC ranger will endeavour to show you the plants and discuss their importance. They will point out any obvious threats (e.g. possums, weeds) to the plants present and options for the landowner to mitigate these to ensure their long term survival if they wish.

For further information on this survey or to report mistletoe sightings please contact Paul Cashmore at the Department of Conservation, Rotorua District Office 07 3497-400.



**Green mistletoe (*Tupeia antarctica*) growing on fivefinger**

Let me be the key  
to unlocking the sale of your home.

The Market is  
on the move.....



& it's the perfect time  
to sell!

So lets get you **SOLD!**



**Cathy Lines**  
**LICENSED SALESPERSON**

Lake Okareka & Lake Tarawera Specialist

M: 021 033 7707

DDI: 07 349 8088

E: [cathy@rotoruaproperty.co.nz](mailto:cathy@rotoruaproperty.co.nz)



## NEW YEAR'S DAY YACHT RACE

**Anyone with a yacht?**

**Keep the first day of 2016 free for the annual  
New Year's Yacht race.**

**Starts at BOYES BEACH around 2pm and sails around  
Lake Okareka.**

**It's a good idea to get to Boyes Beach by 1pm.**

**Entries on the day. ALL WELCOME**

**Come out for a fun day on the water!!**



# CAPERS

EPICUREAN

**Breakfast  
Lunch  
Dinner**

**Ph 348 8818  
[www.Capers.co.nz](http://www.Capers.co.nz)**

# VETRO

MEDITERRANEAN FOODS

1131 Amohau Street, Rotorua

Ph: 07 346 0081

Email: [jen@vetrorotorua.co.nz](mailto:jen@vetrorotorua.co.nz)

[www.vetro.co.nz](http://www.vetro.co.nz)

**Open 6 days &  
7 days over the  
summer**



VetroRotorua



**ALL THOSE HARD TO FIND INGREDIENTS  
AT EVERYDAY LOW PRICES**



## TRAPPING UPDATE—DECEMBER 2015

There is not too much to report on the trapping front as we are going through our spring quiet patch—hopefully things will pick up soon. There is a new trap line along the walkway between Boyes beach and the DOC camp and this has been catching well.

Over Labour Weekend we approached people with holiday homes to see if they could help us and the birds by agreeing to have a bait station on their property which the trapping team will maintain. Thanks to you all who agreed to help. We will be deploying the traps soon.

We often wonder if we are making a difference for the birds. Perhaps the pied stilts on the walkway may think so. Currently there are three birds on nests and one pair with four fledglings. The parents are very protective, vocal and have no hesitation seeing off cruising swamp harriers.

Mike Vincent



Chris Smith  
**glass**  
professionals



CALL 07 348 5038  
**24 Hour Service**

91 Riri Street, Rotorua [info@chris-smith-glass.co.nz](mailto:info@chris-smith-glass.co.nz)  
[www.chris-smith-glass.co.nz](http://www.chris-smith-glass.co.nz)



**Auto Glass**

All makes.  
All models.

- Splash Backs
- Frameless Showers
- Window Maintenance
- Mirrors
- Window Tinting
- Glass Balustrades
- Retro Fit Double Glazing  
to Existing Aluminium & Wooden Joinery

## UPDATE FROM BAY OF PLENTY REGIONAL COUNCIL

### 2014/15 Water Quality Results

The annual Trophic Level Index for results showed that water quality for Lake Ōkāreka continues to remain stable, although still above its target. The University of Waikato is currently undertaking land use and lake modelling to establish whether Lake Ōkāreka is likely to meet its target Trophic Level Index with the interventions which are currently in place. This work will also inform what further intervention is required. Once this work is available we will be able to share it with the community and discuss next steps. Money is allocated in the Regional Council's new Long Term Plan for further actions in the Ōkāreka catchment as required. These interventions could include things like land use change and gorse management. This will be decided once the information is available from the University.



### Land Management Officer

Sam is originally from Whakatāne and was a summer student at BOPRC before joining ECan as a Biosecurity Officer. Sam returned to Rotorua in July and is part of the LMO team based in the Rotorua office. She is currently working with landowners in the Lake Rotorua catchment to reduce their nutrients from entering the lake under the proposed draft rules.



If you want more information on biodiversity management plans, riparian management plans or sustainable land use within the Lake Ōkāreka catchment then phone Sam on 0800 884 880 and have a chat about how she can help you.

### Lakes Website Upgrade

The Lakes website, [www.rotorualakes.co.nz](http://www.rotorualakes.co.nz), has had an upgrade to make it easier for people to use and find information. Go online to find out what projects are currently happening for the Rotorua Te Arawa lakes, see what events are being held on the lakes and how to book the lakes for events.

### Safety message from the Harbourmaster

The Bay of Plenty Regional Council Maritime Team will once again be on the water this summer, making sure people are being safe. They will be supported by a very capable team of Harbour Patrol Wardens and Voluntary Safe Boating

Advisors. Remember these folks know their stuff – so if you have any questions, or are after some safe boating advice or local boating information make sure you say hello.

Their focus this summer will be reminding people:

- ‘Lifejackets are for life’ - get it on or it’s no good.
- Skippers need to check their boats and equipment before hitting the water.  
The skipper is legally responsible for the safety of the boat and all the people on board, and is also responsible for complying with all the relevant rules and regulations.
- To always check the marine weather forecast before hitting the water. If in doubt, don’t go out.
- To always carry two waterproof ways to call for help like a VHF radio and cell phone in a waterproof bag.

While these short and snappy messages will be played over the airwaves and promoted by their staff and volunteer harbour wardens this summer – they do reiterate a serious message about safety.

### **Out at night? Remember to show a light!**

Power driven vessels under 12m underway between sunset and sunrise, or in areas of restricted visibility, must show an all round white light and side lights. At anchor these vessels are required to show an all round white light.

*Power driven vessels under 7m who cannot exceed 7 knots underway between sunset and sunrise, or in areas of restricted visibility, must show an all round white light only.*

*Non powered vessels*, for example canoes, kayaks, rowing dinghies and paddleboards, underway between sunset and sunrise, or in areas of restricted visibility, must show a white light or use a torch to indicate their presence.

### **Kura to join the fleet**

On December 10<sup>th</sup> the Bay of Plenty Regional Council will welcome the newest member of their fleet, Kura. This new vessel and our patrol team will be on the Rotorua lakes this summer helping to ensure everyone has a safe summer on the water.

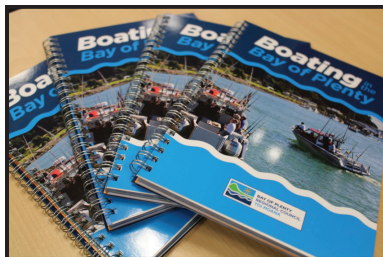
### **Smart new look for the Maritime Team**

This summer the Maritime Team will be sporting a new and unified look, with all patrol boats clearly branded. This new branding will help ensure the team are visual and that people are aware they are available for safe boating advice and local boating information.



### Boating in the Bay of Plenty booklet

We have recently launched a new Boating in the Bay of Plenty booklet and this is freely available from the Regional Council's Rotorua office at 1125 Arawa Street. This resource is jam packed with helpful reminders about how to stay safe on the water, includes information about local rules, designated reserves, maps and a heap more. Next time you are in town make sure you pop into the Council to collect your free copy.



### Boating rules under review

The Bay of Plenty Navigation Safety Bylaw is currently being reviewed. The Bylaw identifies dedicated areas for surfing, skiing, jet skiing (personal watercraft) and passive recreation. It also sets the rules for anchoring, wearing life jackets and many other things.

Bay of Plenty Regional Council is currently gathering informal feedback and wants to know what you think about the current rules and what issues are important to you. Visit [www.boprc.govt.nz/navbylawreview](http://www.boprc.govt.nz/navbylawreview) or call Shawn Baker on 0800 884 880 to find out more and have your say.

## TELFER MARINE LIMITED

### UNDER NEW MANAGEMENT

#### Rotorua's Largest Range of Boating & Watersports Accessories Sales & Servicing

All makes and models  
Free pick-up/drop off locally  
New and used boats  
Come in and see our fully qualified technicians



236 Te Ngae Road Rotorua / P : 07 345 9854  
[www.telfermarine.co.nz](http://www.telfermarine.co.nz)

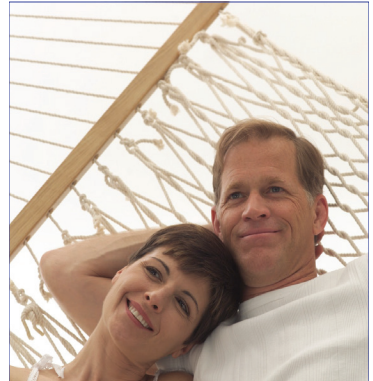
[www.boatingandoutdoors.co.nz](http://www.boatingandoutdoors.co.nz) Free Phone 0508 262824





## Relax At The Lake This Summer

**Massage is a popular way to relieve aches & pains caused by holiday activities at the lake. Skiing shoulders, gardening backs, last-minute-rush-tension, end of year exhaustion. Great reasons to unwind and refresh yourself at Careem in 2016**



### Massage unlocks tension

Muscle stiffness from overdoing it after a long winter a behind the desk brings people crawling into my clinic over summer. But after an hour—they bounce out again— with body and mind both greatly relieved.

There are several different types of massage for you to choose: from the “hurty-ouchy” type to the “restore-my-spark” type. Tell me what you need and I will suggest the best one for you.

### Wide Range Of Services:

As I am qualified in beauty, massage, spa therapies and natural therapies, I have a range of approaches at my fingertips to suit your needs. Besides massage, I offer facials, spa packages, mineral makeup, natural skincare, beauty services, waxing, pedicures. Locals packages are popular as a whole-family treat over summer or as an ongoing body/ mind maintenance plan for yourself.

**Yes, Gift Vouchers are available** – You can come and buy in person or we can do it online. Just email me and I will make your gift-giving easy. Check out my website for ideas on massage, spa and beauty—eg “Indulgence packages” - to help you choose a gift without that “what shall I select?” stress.

Careem Wellness Spa

89 Acacia Rd, Lake Okareka  
RD5, Rotorua, 3076, NZ.

[www.careem.co.nz](http://www.careem.co.nz)

e: [careemspa@gmail.com](mailto:careemspa@gmail.com)

**Contact Carol now!**



**Carol Bannister**

**Open from 28th December  
Closed New Years Day**

**Call Carol  
TODAY**

**for a more relaxed 2016**



## LAKE OKAREKA PRESCHOOL NEWSLETTER

Welcome to new families Lucie Bradley, Mum and Dad Tony and Jess. Ariadne and Mum and Dad Anna and Ignatios, Olive Trass who joins big brother Harrison. At the end of the term we will have a farewell to Joseph Bowyer who is graduating to school. Happy School days Joseph.

Thank you to Katie Hoy photography for the lovely fun family photos and her kind donation for Preschool. We are going to purchase two new runner bikes and another children's camera. Thanks also to everyone who supported the social evening for new families and also to celebrate Debbie's ten years at Preschool. We had a delicious pot luck dinner/BBQ with delicious sausages from the Redwood Butchery.

**Learning at Preschool**—The children have been experiencing fun creating many Christmas art creations using a variety of art techniques. The hall had many displays of art and of course a Christmas tree. The children enjoyed baking the cakes again for the community. This is always a time to experience the importance around giving and the children had the invitation to donate to the Salvation Army appeal for families again this year. Then of course we have rehearsed the Nativity songs and play which was performed on Friday 27 November was another great event. The children did a superb performance and all were stars. Thank you to LOCA Committee for another great Christmas celebration and of course to Santa making another great appearance. Santa also visited us on Friday 4<sup>th</sup> as shown below.

**Recycling and Cardboard**—We will not be continuing the paper and cardboard recycling at Preschool from the end of December. We thank you for support. Preschool will continue practices of recycling to care for the environment.

We close for our Christmas break on Friday 11<sup>th</sup> and reopen on Tuesday 2<sup>nd</sup> February. Enrolment enquiries can be made to [office@lakeokarekapreschool.co.nz](mailto:office@lakeokarekapreschool.co.nz) or visit our website on [www.lakeokarekapreschool.co.nz](http://www.lakeokarekapreschool.co.nz)

**Merri Kirihimete**—On behalf of the Teachers and Board of Lake Okareka Preschool we wish you a very happy and safe Christmas.





# ROTORUA LAKES COMMUNITY BOARD

## Submission to the Rotorua Lakes Council Sports & Recreation Strategy

We note that one of the four objectives of this strategy is to; **Improve communication and collaboration between communities and sport and recreation stakeholders.**

The Rotorua Lakes Community Board (RLCB) supports this strategy and would like Council to take account of the following.

- 1) The Rotorua Lakes are one of New Zealand's iconic playgrounds that attract visitors and tourists from around the world as well as a wide range of sporting events and of course trout fishing.
- 2) The Lakes residents are an integral part of many of the events and are involved with lake and land activities providing volunteers as lake wardens, open space wardens and for traffic control. They also work closely with the Harbourmaster on lake closures for events and with RLC on road closures for events.
- 3) Lake Tikitapu is the major "events" venue with a large motor camp that at times has 800 plus people staying overnight and nearby Lake Okareka has two popular campgrounds catering mainly for campervans. These two camping areas are managed by the Lake Okareka Community Association.
- 4) Lake Okareka is a popular location for waka ama with their own club house and is a training base for this growing activity. They have events at the different lakes and attract many supporters.
- 5) The provision of new walkways and off road mountain bike tracks around the lakes are attracting much interest and inevitably increasing pressure on the roads and parking areas.
- 6) Management of events is becoming increasingly important particularly during summer and school holidays and whilst the Regional Council has guidelines covering lake usage for events this is not the case with the Lakes Council for other events.

The future growth of Rotorua requires the lakes residents, the Regional Council, the Lakes Council and the recreation stakeholders to work together to ensure that new facilities and beautification projects etc are available for future generations to enjoy. At the same time that property values are maintained and enhanced.

To this end we believe it is important that the Rotorua Lakes Community Board has representation on the Sport and Recreation Committee.

Geoff Palmer

Chairman



## MEET YOUR NEIGHBOUR—KATRIN WEBB

Some of you may know me from my morning runs with my black beauty dog Jett – my name is Katrin Webb and I have been residing in various locations in Okareka for the past 10 years, but we have finally settled in 2 Branch Road this year!

I have been involved with the Tarawera Ultramarathon Race, an Ultramarathon run from Rotorua to Kawerau, which comes through our village, for several years as the Rotorua Organiser of logistics and volunteers and as a volunteer myself. I have now finally committed to the challenge of running the event myself and will tackle the daunting task of running 100km in one go on 6 February 2016.

As my neighbours can attest, I am also a bit of an animal lover and between Sarah from Summit Road and Siobhan on Branch Road, we form a triangle of SPCA foster homes. I also work with the Kawerau SPCA since adopting our girl Jett from this centre and learning that this centre struggles due to its location in a low socio-economic area and a heavy influx of dogs that are dumped and hurt in hit and runs. This year the centre has seen an unusual high intake of animals and an unusual high amount of animals that needed serious Vet treatment. This has left the centre with a high Vet bill.

The Tarawera Ultramarathon attracts a lot of competitors and attention to the region, but the focus is on Rotorua, whilst Kawerau is receiving little of the spill-over benefits of the event. Because of this, I decided that I would combine my personal challenge of running 100km with a fundraiser for the Kawerau SPCA.

My aim is to raise cash funds for the centre, which will help with paying off their Vet bill. I have set up a givealittle page for direct donations to the centre <https://givealittle.co.nz/fundraiser/paws4kawerau/#> and am also running a facebook page to promote this fundraiser and where you can follow progress <https://www.facebook.com/paws4kawerau/?ref=hl>.

Other ways of helping are to donate anything that can be used in the centre – food, old sheets and towels, old dog leads and collars, dog and cat toys and anything that can be used as bedding for animals.

So if you want to help - look up paws4kawerau on givealittle for a donation or drop off anything you wish to donate to Kawerau to our home and I will arrange that it gets to the centre.

Katrin phone 3628 473





## **Lake Okareka Community Assn Annual General Meeting (LOCA AGM)**

is to be held on

**Sunday 31<sup>st</sup> January 2016 from 10 am**

in the Lake Okareka Community Hall

All property owners and people living at Lake Okareka are welcome to attend

### **Nominations for LOCA Committee**

These can be taken ahead of the AGM, or they can be made by financial LOCA members at the AGM. If you would like to be elected for the LOCA Committee, and you are unable to attend the AGM, please use the Nomination Form below and either hand or post to the LOCA Secretary.

If you have a matter that you would like discussed at the LOCA AGM, please feel welcome to come along and raise it at the AGM. Alternatively, if you are unable to attend the meeting, please contact the Chairman Geoff Palmer 362 8379 or any of the Committee members – names and contact details are inside front cover of “The Newsletter” and pass on the matter(s) you would like raised.

### **Lake Okareka Community Association Inc.(LOCA)** **Nomination Form for LOCA Committee 2016**

Name of Person Nominated for LOCA Committee

\_\_\_\_\_  
(this person must be a current financial member of LOCA)

Contact details - Address: \_\_\_\_\_

Phone: \_\_\_\_\_

Email: \_\_\_\_\_

Nominated by: \_\_\_\_\_

(this person must be a current financial member of LOCA)

Seconded by: \_\_\_\_\_

(this person must be a current financial member of LOCA)

Please post or hand form to the Secretary by the **30<sup>th</sup> January 2016**

The LOCA Secretary  
2 Pryce Road  
Lake Okareka  
R D 5  
ROTORUA 3076

## NZ FALCON—KAREAREA

If you mountain bike, run or walk with your dog in Whakawerawera and spend time in the vicinity of Hill and Windy Roads you almost certainly have been dive bombed by the pair of NZ falcons (Karearea) who have taken up residence in the area. The adult birds are the product of captive breeding program run by Wingspan Bird of Prey Trust which involved the birds having their early life in the Government Gardens. The male (Hatupatu) is two years old and the female (Maia) is one.

From time to time they can be seen around Moore's farm and Okareka hunting; they have a hunting area of about nine square kilometres. I first heard one of them in August right on dusk in the forest but it was weeks before I finally saw them. The birds have found time to successfully mate in between chasing people, they laid three, hatched two, one of which has survived. The birds share parenting duties with both sitting on the nest and looking after the young. During the mating and egg laying period the male hunted for two and fed his partner.

Mike Vincent





# Thompson Marine Ltd

## Rotorua's Specialist Mercury Dealer

### Sales & Service

All makes & models of  
outboard motors  
MerCruiser stern drives

### Marine Accessories

Including Life Jackets &  
Ski Vests  
Skis  
Marine Electronics, etc

**seaboss**  
ALUMINIUM BOATS

**MERCURY**  
OUTBOARDS

**MERCURY**  
**MerCruiser**  
STERN DRIVES & INBOARDS

We are looking to buy or sell on behalf - good second hand boats.

**Guaranteed workmanship from fully qualified marine technicians**



31 Fairy Springs Road | PO Box 1337 Rotorua

P : 07 348 4997 or 0800 95 95 90 | F : 07 346 0037 | E : thompsonmarine@seaboss.co.nz

**THOMPSON**  
LAWNMOWERS & CHAINSAWS  
(1996) LTD

- Chainsaws
- Lawnmowers
- Reel Mowers
- Ride-On Mowers
- Line Trimmers
- Scrub Cutters
- Forestry Pruning Equipment
- Rotary Hoes
- Generators
- Blower / Vacs
- Water Blasters & Pumps
- Splitters & Chippers



Corner Old Taupo & Sunset Roads

PO Box 1337 Rotorua

P : 07 348 4441 | F : 07 349 2944

info@thompsonmowers.co.nz

www.thompsonmowers.co.nz

**Sales & Service of Outdoor Power Equipment**

**Rotorua Agents for Husqvarna Outdoor Power Equipment,**  
including Chainsaws, Trimmers, Ride On Mowers, and more  
**Also stock and service Lawnmaster, Masport and Honda Power**  
**products, Briggs & Stratton and Robin Engines**

**We service, sharpen and repair all makes and models**

**Thompson Trimming**  
**Phone 348 4441**

Upholstery | Repairs | Furniture Recovering | Boat Canopies  
Squabs | Hull Linings | Forestry Clothing, chaps, pouches, etc.



## REPORT FOR DECEMBER 2015

Landcare Okareka volunteers have completed a busy year, which has involved several new plantings:

- Taumaihi reserve, at the end of Acacia Road
- an area along the lake outlet canal for Bay of Plenty Regional Council following the replacement of the Lake Okareka outlet pipeline
- in the reserve at the start of the Lake Okareka walkway
- opposite Benn Road in Tikitapu Scenic Reserve - this was a joint Landcare Okareka, Rotorua Forest & Bird and Rotorua Botanical Society planting working bee of around 1000 plants provided by Bay of Plenty Regional Council and Department of Conservation
- in the reserve area near the entrance to the DOC camp, Millar Road
- some more pohutukawa trees at Silver beach and in the area near the shade shelter.

Maintenance of earlier plantings and new plantings by LO volunteers, is on-going throughout the year, especially when grass and weeds are growing quickly.

LO volunteers continue to undertake litter pick-ups along roadsides around the settlement as and when the need arises. It was good to see that some of the garden prunings we had noticed earlier in the year, have been removed from road sides and reserves. Keep up the good work and please don't be an untidy local.

Landcare Okareka is in the process of completing a Biodiversity Management Plan with the Bay of Plenty Regional Council, which has been worked on over a number of months. We will be very sad to say goodbye to Land Management Officer Stephanie Bathgate who has been extremely supportive of the work that LO volunteers have been doing in the Lake Okareka catchment. However, we also look forward to working with Helen Creagh from Bay of Plenty Regional Council in the coming year.

We hope that we might keep getting some amounts of rain over the next few months to help the new plantings. If you are down near the new pohutukawa trees on the Lake Okareka Walkway please feel free to look for the bucket and give the plants a drink from the lake, especially if it does get very dry.

In the meantime, I would just like to thank everyone who has come to help at any Working Bees throughout the year. Have a safe and relaxing Christmas and I wish everyone a really great 2016. Watch out for the Landcare Okareka sign boards to go up in 2016 - and please feel free to come and help.

Sandra Goodwin, Secretary, Landcare Okareka, phone 3628 865 or email [sgoodwin@actrix.co.nz](mailto:sgoodwin@actrix.co.nz)

## TIMM'S POSSUM TRAPS—DECEMBER 2015

Are you noticing leaves on garden or vegetable plants that appear to have been chewed? What about new leaves on roses? Or are you hearing possum fighting noises at night?

These pests will be active again around the Lake Okareka settlement. We have some Timm's Possum Traps available to help you catch and kill these pests. These Bay of Plenty Regional Council funded Timm's possum traps, are available on loan to any Lake Okareka residents, if you contact Sandra and Mike Goodwin 362 8865.

The Lake Okareka community has ten traps which were funded as “loan traps” by Bay of Plenty Regional Council. These traps have been borrowed at various times by members of the community. If you are having possum problems – maybe eating fruit or flowers or they are making a nuisance of themselves at night – and you would like to borrow a Timm's trap, give us a call.

If you are not familiar to the “Timm's trap”, we will provide you with some instructions about how to use the traps. We will also give you some advice about what seems to work best as “bait” - such as apple with cinnamon, or apple and peanut butter. If you can keep a note of any possums caught please pass that on to us when you return the trap. We like to know for our records what is being caught around the place and we can also pass that on to the Regional Council.

For more information or to borrow a trap, please contact Mike & Sandra Goodwin, phone 3628 865 or email [sgoodwin@actrix.co.nz](mailto:sgoodwin@actrix.co.nz).



**MINI SKIPS**  
ROTORUA

175 Okareka Loop Road  
RD5, Rotorua

**BRIAN MOORE**  
Ph: 362 8576  
Mobile: 021 741 446

The image is a green rectangular sign with a white border. At the top, it features the 'MINI SKIPS' logo in white and red text. Below the logo, the word 'ROTORUA' is written in small white capital letters. In the center, there is a photograph of a white Mini Skipper truck with a green skip bin mounted on its back. To the right of the truck, the address '175 Okareka Loop Road RD5, Rotorua' is printed in white. At the bottom right, the contact details for Brian Moore are listed: 'BRIAN MOORE', 'Ph: 362 8576', and 'Mobile: 021 741 446'.



## LAKE OKAREKA WALKING TRACK REPORT—DECEMBER 2015

Volunteers will continue to work on the new Lake Okareka Walking Track over the coming weeks and months. Working Bees are usually held on the first Saturday of each month, and on Wednesday afternoons/early evenings after work. If you would like to know more please contact Sandra 3628 865 and I can add your name to the email list for these working bees.

I am very pleased to report that applications for funding to go towards paying for the construction and materials for the boardwalks and foot bridges for the walking track from Boyes beach to the Dept of Conservation camp have been very generously supported by several charitable funding agencies. Grants have been made by the following: First Sovereign Trust Ltd \$5,000.00; The Southern Trust \$20,000; Four Winds Foundation Ltd \$10,000 and Rotorua Energy Charitable Trust \$50,000 - a total of \$85,000. Our thanks go to each of these funding agencies for their very generous support which is much appreciated. Along with money that has been saved from the management of the Millar Road, Department of Conservation camp, we now have sufficient funds to complete all of the work required for the track.

Currently the Lake Okareka Walking Track Committee is working on a building contract which will need to be signed off by the approved builder, the LOCA Committee and checked through by the Department of Conservation. We hope to get that all completed before Christmas so that the builder can order the materials and be ready to begin work on the professionally constructed parts of the track early in 2016.

We are aware that many people are already using the track, even though it is still under construction. Please be careful when using it, especially areas where you have to cross a small stream, or where volunteers are working. Once the builder begins work there may be areas that you will not be able to use at times. Please be aware that the track is still under construction and obey any signage or safety tapes or barriers that may be put up.

There is still much work to be done, and any volunteer help with the project is most welcome. We look forward to the completion of this project in 2016.

Sandra Goodwin  
On behalf of Lake Okareka Walking Track  
Committee



## NO DOGS AT LAKE OKAREKA CAMPGROUND PLEASE

Visitors to campsites around Rotorua are asked to leave dogs at home in the interests of visitor safety and enjoyment.

DOC administers 6 campsites in the Rotorua District including the Lake Okareka Campground off Millar Road. All of these campsites are governed by the Reserves Act which does not permit dogs. The Wildlife Act, the Conservation Act and the Rotorua Lakes Council (RLC) dog control bylaws also prohibit dogs from these areas.

DOC is currently working with campsite managers across the district to make sure signage, web content and visitor information is consistent with legislation.

RLC administer a number of public spaces that are designated dog exercise areas. Further information can be found at [www.rdc.govt.nz](http://www.rdc.govt.nz). A fact sheet relating to dogs in conservation areas is available from [rotorua@doc.govt.nz](mailto:rotorua@doc.govt.nz).



### Lakes Electrical Ltd.

442 Spencer Road, Lake Tarawera, 3076  
Home: 07 3628944 Mobile: 021 0298 1942

[www.lakeselectrical.co.nz](http://www.lakeselectrical.co.nz)

**Industrial, Commercial & Domestic Electricians**

#### For all your current needs

In the Rotorua area

- Installations – New Builds, Extensions, Renovations etc.
- Hot Water Cylinder – Complete Tank Drain & Element Change
- Water Pumps
- Spa Pools – Service & Maintenance
- Appliance Repairs
- Lighting & Power
- CCTV
- Automated Gates – Supply, Installation & Maintenance
- Security Alarms – Installations & Maintenance
- Heat Pump and AC Installations
- Maintenance – 24 hour call out
- Fuse Board Upgrades
- TV Satellite Installations
- Fault finding

For all your electrickery needs call Pete today

**Home: 07 362 8944 Mobile: 021 0298 1942**

**\*\*\*NO CALL OUT CHARGE\*\*\***

## DOC CAMP & PICNIC AREA—VOLUNTEERS WANTED

The DOC camp and picnic area, Millar Road, Lake Okareka continues to be a very popular place to visit and stay, especially during the warmer summer and autumn months. Volunteers from Lake Okareka Community Assn (LOCA) have continued to manage the camp and day visitor area, under the management contract with the Department of Conservation. A huge thank you to the small team of volunteers who have worked so hard with looking after the camp ground over the past six months of winter and early summer.



Welcome back to volunteers from last summer and a special welcome to some new volunteers as well. Thank you for your offers to help. We could do with a few more volunteers for the summer season - both for morning (happens all year round) and evening camp duties (when the camp starts to get busy again - from November through to about April or May). Usually we work in pairs - could be a couple or a pair of friends - and we usually have a week of shifts at a time.

If you are at all interested to help please contact Sandra Goodwin 362 8865 or email [sgoodwin@actrix.co.nz](mailto:sgoodwin@actrix.co.nz). We would love to hear from you.

## THE LEWIS PLUMBING COMPANY

*Registered Craftsman  
Plumbers & Gasfitters*

**Ph: (07) 343 9060**  
**57 Tallyho St, Rotorua**  
**[jon@lewisplumbing.co.nz](mailto:jon@lewisplumbing.co.nz)**  
**[www.lewisplumbing.co.nz](http://www.lewisplumbing.co.nz)**

## RAT BAIT AND BAIT STATIONS—SUMMER 2015

Thank you to everyone who has been rat baiting over the last few months. It is also pleasing that more lakeside properties now have rat bait stations. It would be great to have even more of these properties and their owners as part of this project. There is still rat bait available and it is a very good idea to keep the bait stations stocked up to help protect nesting and fledgling bird life over the next couple of months.

Ditrac rat bait provided by Bay of Plenty Regional Council is, once again available to individual property owners, to support enhancing the biodiversity at Lake Okareka, especially the wetland dwelling birds, including the endangered dab chicks. If you are interested to take part in this project, but maybe feel that you do not come to your property often enough to keep the bait station full, please contact us. We may be able to work out a partnering system with someone who lives here permanently, and is prepared to keep your bait station filled.

**Ditrac is a poison, and care must be taken when using it.**

### **How to Use Ditrac Bait:**

It is recommended that bait be fed in a type of bait station, fitted with a locating rod, that does not allow the rats to carry baits away to be stored. The baits have holes in them and they thread onto the rod. Rats and mice eat the bait in the bait station. The bait station protects the bait from the weather. It means also that bait cannot be eaten by non-target species such as birds, dogs, cats and children.

**Bait stations** are available by contacting Mike and Sandra Goodwin 3628 865 or email [sgoodwin@actrix.co.nz](mailto:sgoodwin@actrix.co.nz). We have a new type of lockable bait station, like a small suitcase. They also have locating pins for the bait. Cost of these is \$25.

**Do you have a bait station already?** That's great if you do. When you collect your bait you will need to confirm your name and address and the address of the bait station. We need to update our data base about bait stations and where they are located throughout Okareka – and many thanks to everyone who has done this so far.

**How do I get bait now?** Bait is available in labelled, zip lock bags, containing 12 rat baits. This is enough bait to fill one bait station 2 times during a month. Bait stations should usually not be filled more than twice during a month, otherwise you are wasting bait and feeding potentially dead rats and mice.

**If you require the bait or a lockable bait station** for \$20, please contact Mike & Sandra Goodwin phone 3628 865, 2 Pryce Road or Rod Stace phone 3628 523, 30 Summit Road.

**Please phone first to arrange a suitable time to collect bait or a bait station.**

## 2015 LAKE OKAREKA COMMUNITY TELEPHONE DIRECTORY

Please make the following changes to the directory:

|      |                         |                 |                           |
|------|-------------------------|-----------------|---------------------------|
| Add: | Light Jason & Tanya     | 7 Acacia Road   | 027 2960 567              |
|      | Green Martin & Louisa   | 19 Loop Road    | martyg@clear.net.nz       |
|      | Kelly Karen & Trevor    | 4 Benn Road     | 3628 850                  |
|      | Plessas Anna & Ignatios | 59 Acacia Road  | 3628 797                  |
|      | Bradley Jess & Tony     | 1 Calder Road   | 021 288 7233              |
|      | Peek Andy               | 6 Ridge Road    |                           |
|      | Lawrence Steve & Evette | 7 Summit Road   | 3628 230                  |
|      | Lorigan Kim & Roger     | 23 Steep Street | 3628 320                  |
|      | Heighway Karen & Ross   | 29 Loop Road    | 3628 435                  |
|      | Hudson Kate & Gavin     | 11 Calder Road  | 3628 317                  |
|      |                         |                 | gavin@pedersen.grap.co.nz |
|      |                         |                 | matrix.kate@gmail.co.nz   |

|         |                      |                 |
|---------|----------------------|-----------------|
| Remove: | Toni Collins         | 2 Branch Road   |
|         | Mathews Kurt &       |                 |
|         | Swindail Melissa     | 14A Calder Road |
|         | Lyons Steve & Cheryl | 8 Loop Road     |
|         | Lyons Lake Stay      | 8 Loop Road     |
|         | Cirme JM             | 53 Loop Road    |
|         | Wallace B            | 29 Loop Road    |

For any corrections, additions or deletions please contact Carol on 3628 702.

# LAKES CONTRACTING

LAWNS, TREE REMOVAL, CHIPPING, RETAINING WALLS, GENERAL  
SECTION MAINTENANCE AND MANAGEMENT

Trees getting out of control!!

We can trim or remove troublesome trees, with our  
new commercial sized chipper.

Convert most of your trees into useful compost  
under your trees and on your garden.

**Earle, Scott and Debbie Morris**

**253 Spencer Road, RD5 , Lake Tarawera**

**Phone: (07) 362 8278**

Email: [silver-fox@xtra.co.nz](mailto:silver-fox@xtra.co.nz)









# LAKE OKAREKA TENNIS CLUB

## Tennis Coaching for children:

Coaching for children this spring season was again successful although the numbers attending were down on recent years. The autumn season gets under way in the first term of the school year in 2016

## AGM:

The AGM was well attended and a new committee is making plans for the coming year ahead.

## Subscriptions 2015/2016 year:

The subscription is a family sub for the year from 1 October to 30 September 2016 and is again held at \$100. Payment is due by 1 October. New members are welcome.

Payment is requested into the Club account at Westpac Bank 03 – 1552 – 0130369 – 00. Reference “Sub” and your family name. **Please e-mail confirmation of the deposit** to avoid any unidentified deposits. Also include in your e-mail current contact details including address and telephone number. A key will then be made available.

**Contacts for the Tennis club:** John 362 8282; Hongli 362 8106 or johnbattersby@xtra.co.nz.

## EVENT LAKE, RESERVE AND ROAD CLOSURES DECEMBER 15 TO APRIL 16

| Start Date | End Date | Event   | Location   | Reserve   | Road Closure / Usage   |
|------------|----------|---|--|---|--|
| 19/12/15   | 19/12/15 | Rotorua Half Ironman                            | Lake Tikitapu and surrounding roads  | Lake Tikitapu   | Road usage is required. Cyclists will be on Tarawera Rd between Lake Tikitapu and Lynmore. At approx 6am the cycle section starts and heads out to Rotoma then returns via Iles and Selwyn roads. Cyclists should be off the road by 12:30pm. Runners are on Tarawera Road between Lake Tikitapu and Te Mu Rd. |
| 23/1/16    | 25/1/16  | Blue Lake Rowing Regatta                        | Lake Tikitapu  | Lake Tikitapu Reserve and DOC Reserve   | There will be traffic control (signs/marshals) on Tarawera Rd by Lake Tikitapu. Traffic control in place both days from 6am until 5pm.   |
| 30/1/16    | 31/1/16  | Blue Lake Multisport Weekend                    | Lake Tikitapu  | Lake Tikitapu Reserve   | Temporary closure of roads. From each intersection of Okareka Loop Road, southerly direction only (a detour will be in place) 8:30am - 10:00am   |
| 06/02/15   | 06/02/16 | Tarawera Ultramarathon                          | No lake closure or use 100k, 50+ mile (85km) or 60km trail ultra, distance run from Rotorua to Kawerau | Boyes Beach – Running through only Aid station at the Blue Lake Holiday Park. | No road closure required. There will however be runners on Tarawera Rd by Lake Tikitapu, then on Okareka Loop Rd, Calder Rd, Steep St and Millar Rd. Approx times 6:30 - 7:30am.   |
| 28/02/16   | 28/02/16 | Ocean Swim Series – Legend of the Lake          | Lake Tikitapu closed for the duration of the event   | Lake Tikitapu   | No road closure required   |
| 05/03/16   | 05/03/16 | NZ Water Ski Racing Association – 100 mile race | Lake Tikitapu  | Lake Tikitapu Reserve   | No road closure required   |
| 01/04/16   | 01/04/16 | Spirited Women                                  | Lake Tikitapu  | Lake Tikitapu Reserve   | No road closure required   |
| 02/04/16   | 08/04/16 | National Secondary School Waka Ama Regatta      | Lake Tikitapu  | Lake Tikitapu Reserve   | This event will be using the Rotorua Ski Club. There will be event and traffic turning signs on Tarawera Rd. Lake Tikitapu Reserve is used for parking each day  |
| 16/04/16   | 16/04/16 | XTERRA Rotorua Festival                         | Lake Tikitapu  | Lake Tikitapu Reserve   | There is a full road closure of Tarawera Rd between each end of Okareka Loop Rd, 6am - 5:30pm. Runners / Walkers on Tarawera Rd, 8am, between Blue Lake and Green / Blue Lake Lookout. This section of road is closed for 5 minutes.   |

Rotorua District Council manages all reserve booking for events that happen in Rotorua. They also meet regularly with the BOP Regional Council to discuss and coordinate events happening close to and on all of the lakes in the region. Both organisations appreciate the impact events can have on the location they are held, both positive and negative. If you have feedback that you would like to offer or you wish to discuss events happening in your area, please contact the Events Manager on 073518654 or by emailing [major\\_events@rdc.govt.nz](mailto:major_events@rdc.govt.nz)

## CLASSIFIED ADVERTISEMENTS

**Heat Pump, Refrigeration and Electrical Work**—no call out/travel costs for local residents. **Contact Andy Peek on 021 203 4413 or 07 929 9857.** Contracted to Philip Smith Electrical.

**Wanted—small “old” Minnow or similar kayak or canoe.** Perhaps you have one that is not used often and could help others enjoy Lake Okareka. **Phone Mike Bannister on 3628 043.**

**Bee Swarms**— Please phone me if you see any swarms this spring but only if they have settled. Not much use if I get a call to say “they went thataway”. Phone Bryan 3628 224.

**Super dry fast start kindling**—\$10.00 for 1 box or \$25.00 for 3 boxes. **Contact Hunter Potter, Ember Enterprise on 3628 556 or hunterjpotter@gmail.com**

**Avon**—my name is Caroline Wingate and I am an Avon representative. If you are interested in Avon please contact me on 3628 207, 021 148 9986 or cwingate@slingshot.co.nz.

**Babysitter**—my name is Lucy Phibbs and I am 14 years old. I am available for babysitting for daytime and evenings. I am enthusiastic and great with kids. **Phone: 3628 897**

### **Are Wasp Nests a Problem for You?**

If you can locate the nest, we can treat it - at NO cost. This is a community service offered by Landcare Okareka, with chemicals funded from donations received by the group—**phone Mike Goodwin 3628 865**

**FREE**—Marque available for community events. **Phone Cathy Lines**, Licensed Salesperson, Okareka & Tarawera Specialist. First National Real Estate. Mob: 021 033 7707 or after hours on 3628 112

**Sharpen your chainsaw** on my electric grinding gadget for free or I will do it for \$5—**phone Bryan on 3628 224**

**Pet Feeding Services** - Pet feeding services over the holiday season and throughout the year, \$7 per visit includes indoor plants watered and mail collected. Limited boarding pens may be available—**phone Carol on 3628 702**

**Heather Horton (Artist)** - Watercolours, Oils, Pastels and lead-lighting work can be seen in the studio. Works are for sale, or can be ordered—**phone 3628 165**

**Trees felled for free** - Conditions apply—**phone Chris 3628 679 or Peter 3628 108**

**Mobile Library** visits every 2nd Monday at the bus stop opposite 19 Loop Road from 3.25pm to 4.10pm.

**Trays made of recycled rimu** - three sizes: 270x375 \$30, 310x450 \$40, 360x510 \$50 - **phone Bryan on 3628 224.**

**Dry Blue Gum**—only \$80 per m3 delivered to Lake Okareka/Lake Tarawera. Minimum of 2m3 for free delivery. **Phone Ngaire 345 7488 or 027 460 7056**

**BK Transfers and Shuttles**—24 hours shuttle service and personalized service to Auckland, Hamilton, Tauranga, Taupo and Rotorua cities/airports. **Phone Graeme 3628 867 or 027 3628 867**

**House Cleaner Available**—hourly rate. Ovens, Ironing, Windows. Anything you need cleaned. **Call Jenny 3628 063**



# DISCOVER YOUR ISLAND BLISS



Hard to believe 2015 is almost over - and the time starts over again for planning holidays and travel in 2016. A year that no doubt will have people thinking 'is it still safe to travel' and it is important to keep it in perspective - we all need to consider what we do want in life and make it happen.

The first round of Europe Early Bird offers are coming to an end but will be re-released in January and February 2016. We expect some very good offers to be on sale, with some fantastic new stopover options especially with Air NZ via Buenos Aires or Houston on their direct services starting soon.

Never underestimate the rejuvenating powers of a short break to one of the many South Pacific islands, all within a short flight and brimming with diverse cultures, scenery and local experiences. To get the best deals and the widest choice, it's always good to book early - particularly if you're wanting to travel during our winter (dare I mention it). I look forward to being of help with your travel plans.



Wishing everyone a very happy and safe festive season and a wonderful year ahead - **Donna Soler.**

HOUSE OF TRAVEL

HOW **Kiwi's** See  
the **WORLD**