



THE NEWSLETTER

Lake Okareka
Community Association (Inc.)

Website Address: www.lakeokareka.org

April, May and June 2013

The Newsletter

of the

Lake Okareka Community Association (LOCA)

Issue 2, June 2013

Issue dates: 20 March, 20 June, 20 September, 20 December

Copies printed: 300

Deadline for copy: 1st of the month of issue

Advertising rates per issue: Quarter page \$25, half \$40, full \$70

Classified adverts: Free for 1st listing/free items (4 lines)

Editor: Maria Haines Ph. 3628 960 email: mariaanddean@xtra.co.nz

Your Committee:

Position	Name	Contact Details
Chairman	Geoff Palmer *	3628 379
Secretary	Sandra Goodwin	3628 865
Treasurer	Bryan Walford	3628 224
	Marcel Van Leeuwen	3628 468
	Lyall Beuth	3628 459
	Mike Bannister	3628 043
	Carol Christian-Price	3628 702
	Chris Russell	3628 030
	Cheryl Lyons	3628 790
	Megan Douglas	3628 682
	Matt Harvey	3628 971
	Ian Potter	3628 556
	Mike Vincent	3628 376
	Blair Gilbert	3628 490
	Katy Hodgson	3628 857
	Harm Zuidmeer	3628 178

* Member of Rotorua Lakes Community Board

DISCLAIMER STATEMENT

The views and opinions expressed in this Newsletter are not necessarily those of the LOCA committee.

CHAIRMAN'S UPDATE—JUNE 2013



Greetings from the LOCA committee. We have now had an opportunity to review the impact of the long dry summer and work with RDC, DOC and the Regional Council on maintenance and improvements in the catchment for the rest of the year and next summer.

The **Lake Okareka Camp Ground** and day picnic area off Millar Road has continued to be popular and we are very fortunate in having a team of competent and dedicated volunteers responsible for managing this facility with revenue exceeding all expectations.

Boyes Beach has been able to accommodate some of the larger campervans and provide an alternative venue at peak periods and we expect demand to increase with the projected increase in overseas tourists.

RDC have recently commenced resurfacing the **Walkway** to the outlet and in conjunction with Landcare have replanted the areas in front of the **toilets** at the Lake Front, Steep Street and Boyes Beach, also pruning and replacing trees/shrubs on the reserves.

There has been a tidy up of the **Lake Front Reserve**. As there has been much interest in this area, I urge you to read the article/sketch with suggestions to ensure all regular users of this area (dog owners, tourists, swimmers, boat owners, fishermen, picnickers etc) appreciate that for better or for worse tourist numbers to the Rotorua Lakes will continue to increase. The Harbour Master has very real concerns for swimmers' safety in this area. **Feed back for this proposal is very important to LOCA.**

The impact on the lake of the discovery of **Hornwort** is a serious issue. The initial report from Regional Council staff recommended it was not practical to eradicate and it should be managed with herbicide control only in areas with amenity and recreational value (Boyes Beach and the DOC campsite).

This has been strongly opposed by both LOCA and the Lakes Community Board with excellent support from our local Regional Councillor, Neil Oppatt. As a result the Regional Council has now reviewed the report and eradication is a real possibility. **The revised report is included in this Newsletter.**

The very low lake level in the early part of the year highlighted the need to fast track the upgrade of the **Outlet Structure/Piping** which has been on our annual plan submissions to the Regional Council for a number of years. The current

pipe through to Tarawera was installed in 1964 and there has recently been a CCTV camera used to evaluate its condition. We look forward to the report which will also contain a review of current operating guidelines.

The **Water Quality** of Okareka is being watched with interest as it is now more than two years since the reticulated sewerage was installed and according to the Regional Council the target for Okareka has been met. The target was set more than 10 years ago at the pollution level of the lake in 1964 despite pastoral farming in the catchment going back to the 1920's.

The pollution reduction in the lake should show on the annual TLI (Tropic Level Index) reading with a reduction from 3.4 to 3.0 but to date there has been no change. Therefore to better track the change LOCA have asked for the monthly TLI readings for both Tikitapu and Okareka as the septic tanks feeding both lakes were removed at the same time. The only difference is that there is no runoff from pastoral land at Tikitapu but there is at Okareka. Council have indicated they do not think it would be helpful to release these figures as they "fluctuate wildly" from month to month!!

The recent arrival of the new **Fire Engine** has resulted in some excellent publicity and interest from the community with a very popular sausage sizzle ensuring many braved a chilly evening to be amongst the first to experience the very latest in fire fighting equipment.

A number of issues involving **cost savings** that may affect Okareka have been taken up with RDC and we are awaiting responses once the annual plan is finalised. These include:

- closing the Steep Street toilet over winter.
- frequency of mowing reserves & road edges
- opening hours at the Tarawera/Okareka transfer and recycling station
- community hall drainage and carpark upgrade.

Fenella Playne has very kindly offered her services to provide a regular feature to the Newsletter where she will alternate an interview with one of the older residents of Okareka and then one of the more recent arrivals, so we better get to know our neighbours. Thank you Fenella.

In case readers are not aware there is an excellent history and photos of the Playne family, Longford Farm and Lake Okareka in the latest edition of **NZ Life & Leisure** Issue 49.

It is very pleasing to note the ongoing update of the LOCA website, www.lakeokareka.org and the links it now has to many of the relevant aspects of life at Okareka so a big thank you from us all to Keiran Oppatt.

Take care of one another and stay warm.

Geoff Palmer

Chair

LAKE OKAREKA FISHING CLUB 2006

ITS TIME TO DUST OFF THE FISHING GEAR!



LAKE OKAREKA 2013 WINTER TROUT FISHING TOURNAMENT

To be held on Lake Okareka from
5:00am Saturday 20th of July to 11:00am Sunday 21st of July

Time to put some new names on the trophies!

Trophy Categories:

Biggest Bag Individual
Biggest Bag Team
Biggest Bag Family
Biggest Bag Junior
Heaviest Trout – Adult Male
Heaviest Trout – Adult Female
Heaviest Trout – Junior
Best Condition Factor

All prizes will be by donation only

Registration:

Lake Okareka Lakefront Friday 19th 4:30–7:30pm
All anglers must hold a current licence which **will be recorded at registration.**

Entry Fee:

Adult \$15.00
Junior \$10.00

Weigh In Times:

Saturday at Lakefront 11am
Sunday at Lakefront 11am

Prize giving:

Sunday from 12:30pm at the Lakefront

Any prize donations gratefully accepted, contact Steve 3628790, Dean 3628960 or Jason 3628682 anytime for more information.



Thompson Marine Ltd

Rotorua's Specialist Mercury Dealer

Sales & Service

All makes & models of
outboard motors
Mer cruiser stern drives

Marine Accessories

Including Life Jackets &
Ski Vests
Skis
Marine Electronics, etc

We are looking to buy or sell on behalf - good second hand boats.

Guaranteed workmanship from fully qualified marine technicians

seaboss
ALUMINIUM BOATS

MERCURY
OUTBOARDS

MERCURY
MerCruiser
STERN DRIVES & INBOARDS



31 Fairy Springs Road | PO Box 1337 Rotorua

P : 07 348 4997 or 0800 95 95 90 | F : 07 346 0037 | E : thompsonmarine@seaboss.co.nz



Thompson Lawnmowers & Chainsaws (1996) Ltd

Corner Old Taupo & Sunset Roads | PO Box 1337 Rotorua

P : 07 348 4441 | F : 07 349 2944

- Chainsaws
- Lawnmowers
- Reel Mowers
- Ride-On Mowers
- Line Trimmers
- Scrub Cutters
- Forestry Pruning Equipment
- Rotary Hoes
- Generators
- Blower / Vacs
- Water Blasters & Pumps
- Splitters & Chippers

Sales & Service of Outdoor Power Equipment
Rotorua Agents for Husqvarna Outdoor Power Equipment, including
Chainsaws, Trimmers, Ride On Mowers, and more
Also stock and service Lawnmaster, Masport and Honda Power
products, Briggs & Stratton and Robin Engines



We service, sharpen and repair all makes and models

Thompson Trimming
Phone 348 4441

Upholstery | Repairs | Furniture Recovering | Boat Canopies
Squabs | Hull Linings | Forestry Clothing, chaps, pouches, etc.



The Lake Okareka Volunteer Rural Fire Force

First of all, I must thank our local community for observing the total fire ban imposed during our long, dry summer. We were fortunate in only having to attend a couple of local vegetation fires, both of which were accidental in nature.

The quick notification of these incidents by members of the public and the timely arrival of the fire force crews ensured these incidents were contained, resulting in minimal vegetation damage and, in one case, saved a residential dwelling.

We now are in possession of our new fire appliance. It was nice to see a number of community members, young and old (and those in between), come along to our open night at the fire station to view our appliance despite, the chilly evening.

With the colder winter nights now upon us and the frequent use of fireplaces (which, of course, you've all had swept clean!), remember to be careful where you place your hot ashes and don't hesitate to call 111 if you experience or witness a chimney fire. From past experience, the actual chimney fire may appear out but it is common for timber embers adjacent to the flue to be smouldering away. Detection of this is often only visible with the aid of a thermal imaging camera.

Also, take care when driving on the roads over the coming months and be aware of wet or icy conditions.

Fire force members, with assistance from the Rotorua District Council, are currently participating in a series of courses to further their training and emergency response capabilities. This is a great opportunity for our newer recruits to broaden their skill base, and to hone the leadership skills of our more experienced members.

Finally, thank you to the fire force and community members who volunteered to carry out marshalling and lake safety at the 3D multi-sport event at the beginning of this month.

For anyone wanting to contact the Fire Force, please phone me on 362 8874, visit us on Facebook or go to our website: www.okarekaruralfire.com.

Phil Muldoon
Chief Fire Officer

Topic: Feasibility Study – Hornwort Eradication from Lake Okareka

Area of Plan: Sustainable Land Management Activity, Biosecurity Programme

1. Key issues

The aquatic pest plant hornwort was detected in Lake Ōkāreka in 2012. Hornwort is a damaging pest that has the ability to impact on recreational, amenity and biodiversity values. Limitations with current surveillance and control techniques mean that eradicating hornwort from water-bodies is challenging. This is particularly so for lakes that have moderate or poor water clarity and have other pest plants present which significantly reduces the chances detecting all hornwort present.

Therefore, we need to develop new surveillance and control techniques or improve current methods if we want to pursue an eradication attempt at Lake Ōkāreka with any degree of confidence.

2. Submissions

Submitters	
<ul style="list-style-type: none"> 24 – 1 Lake Ōkāreka Community Association 	<p>Lake Okareka Community Association requests that this bullet point be added to the list of Key Projects on page 39 of the Draft Plan:</p> <ul style="list-style-type: none"> to finalise and implement the hornwort eradication programme for Lake Okareka

3. Background

The aquatic pest plant hornwort was discovered in Lake Ōkāreka in 2012 and delimiting surveys have revealed that 17.5 hectares of the lake is currently lightly infested.

This incursion is of significant concern as hornwort is able to occupy a broader range of habitats than other aquatic weeds. Once established it can form dense beds that dominant all available habitat. It is easily dislodged by water or wind movement and can form large floating rafts which are moved around the lake by wind and wave action.

Therefore, hornwort can degrade the health of a water body by impacting on:

- Biodiversity by rapidly colonising and replacing native vegetation in all available habitats
- Amenity and recreation by restricting access to and use of water bodies.

Staff discussion with the Lake Ōkāreka Community Association indicates there is strong community support for hornwort to be eradicated from the lake.

However, current hornwort surveillance techniques are limited by water clarity and the presence of other aquatic weeds; both of which are significant problems in Lake Ōkāreka. Due to these limitations there is a high degree of uncertainty as to whether all hornwort present can be detected and subsequently controlled with current surveillance and control methods. Given this, staff currently believe there is significant risk that an eradication attempt may fail.

Template for Annual Plan Deliberations 2013/14 A1595874

Based on this assessment, staff recommended to the Operations, Monitoring and Regulation Committee (OMR) at its 8 May 2013 meeting that Council implements a "Containment" management approach that would aim to minimise impact of hornwort on recreational, amenity and biodiversity values in the lake. After considering the paper, the Committee asked that staff implement the proposed plan while investigating options for improving surveillance and control with the view of carrying out an eradication attempt if new technologies indicate a reasonable chance of success.

1. Discussion

Following OMR, staff have discussed opportunities for improving hornwort surveillance and control with aquatic pest scientists from NIWA, with the view to developing techniques that would make an eradication attempt at Lake Ōkareka feasible. From these discussions NIWA have suggested the following research programme:

a. Literature review on pest surveillance to confirm best scientific practices

Complete a literature review of surveillance approaches used in other countries to ensure best practices are applied to Lake Ōkareka.

b. Identify potential for remote sensing using new technologies (e.g. remote DNA sensing)

Investigate advances in DNA testing as applied to submerged aquatic pest species, in particular weed species and identify any scope for development and relevance of application.

Also, test new 'state of the art' sonar equipment from the USA (top view & side scanning) that NIWA have now purchased. This equipment has markedly improved sensitivity with potential for weed species differentiation.

c. Assess current surveillance methods and scope potential for improvement

Test efficiency and effectiveness of current surveillance techniques i.e. boat manta board tow, scooter, unaided scuba diver surface weed bed only, scuba diver looking into & under weed bed and snorkel diver.

Also test whether controlling the *Lagarosiphon major* and *Egeria densa* weed beds prior to carrying out surveillance improves hornwort detection rates.

d. Validate or identify potential to improve control techniques

Identify best approach for maximising hornwort control within *Lagarosiphon major* and *Egeria densa* weed beds. Also, evaluate viability of hornwort fragments based on size, part of stem, growth beneath dense *Lagarosiphon major* and *Egeria densa* weed beds. This would include looking at how to minimise fragmentation and dispersal of hornwort.

Current practices would be reviewed and potential improvements identified.

The cost to deliver this research programme is estimated to be approximately \$70,000. It would also, involve in-kind support from Council (boats, skippers, divers) to an estimated value of \$15,000.

Currently there is no allowance in the Biosecurity Programme budget to cover these costs, so additional budget allocation will be needed or a reduction in biosecurity service delivery allowed for.

1. Recommendations

That the Regional Council:

- 1 Notes that the Operations, Monitoring and Regulation Committee passed the following resolution at its 8th May 2013 meeting:**
 - 1 Receives the report, Lake Okareka Hornwort Management Plan.**
 - 2 Continues with existing management programme and explore all options around detection and targeting eradication.**
 - 3 Requests a report back on alternative options for reduction and what further research may be undertaken.**
- 2 Notes that there is currently a high degree of uncertainty of eradicating hornwort from Lake Ōkāreka given limitations with current hornwort surveillance and control methods.**
- 3 Agrees in part to submission 24-1 from the Lake Ōkāreka Community Association by adding a new key project to the 2013/14 Annual Plan under the Sustainable Land Management Activity to "Research improved hornwort surveillance and control methods and evaluate the feasibility of eradicating hornwort from Lake Ōkāreka".**
- 4 Increases the operational budget of the Biosecurity Programme by \$85,000 to cover the cost of a research programme that covers:**
 - a. Literature review on pest surveillance to confirm best scientific practices**
 - b. Identify potential for remote sensing using new technologies**
 - c. Assess current surveillance methods and scope potential for improvement**
 - d. Validate or identify potential to improve control techniques**
- 5 Notes that the results from the research programme will allow staff to re-evaluate the feasibility of eradicating hornwort from Lake Ōkāreka.**
- 6 Notes that staff will report back to Council at the completion of the research programme recommending whether or not Council should attempt a hornwort eradication programme in Lake Ōkāreka.**

PHONE BOOK ADDITIONS AND CORRECTIONS

Page 2	Add	Gurran Paul & Adele	1 Pryce Rd	3628 911
Page 7	Change	Withers Toni	7 Wattle Gr	3628 965

Spare phone books are available from Carol on 3628 702. If you are NOT already in the 2013 Community Telephone Directory and want to be please contact Carol on 3628 702.

LAKE OKAREKA TENNIS CLUB

Winter Tennis:

The Club has wound down for the winter months but new members are always welcome. The subs for the current season ending in October remain a very reasonable \$100 for the whole family.

Netball:

The Club has purchased netball hoops for casual children and adult play. Megan Douglas is organising a casual adult season for the next school term. Contact Megan on 362 8682 or megan@millarch.co.nz if you are interested in participating in casual netball probably, on a Sunday afternoon.

Coaching

The Club coach Henry Gers is available for group or individual lessons at the Rotorua Club in Manuka Crescent. Henry has group lessons which are great fun and good exercise. Henry's number is 021 627 013 or henrygers@hotmail.com

NEIGHBOURHOOD SUPPORT

Aren't we fortunate living out here at the lake with no serious crime happening? Let's hope it continues. There was however an attempt to steal a stainless steel tub from the DoC Camp a few weeks ago. I think they must have been disturbed before they could get away with it. Hopefully we have managed to better secure it now.

We are in the process of combining NS with Civil Defence and will be looking for more coordinators in order that we can have the whole of the village covered. We will also be updating peoples' records and adding any CD skills you may have. If someone knocks on your door with a request that you become a coordinator please assist if you can as it is not an onerous task at all.

As I am away quite a bit and have a long break planned soon we are setting up the emailing so that another two people can access emails sent to me regarding NS. Hopefully this will be put in place shortly.

Keep smiling!!
Lyll Beuth
Ph 3628 459

TAX MADE SIMPLE

FREE NO OBLIGATION CONSULTATION TO SEE HOW WE CAN HELP YOUR BUSINESS GROW.

CONTINUED SUPPORT AND FREE ONE HOUR CONSULTATIONS EVERY MONTH ONCE YOU HAVE JOINED.

WE OFFER SUPPORT, ADVICE AND ASSISTANCE RELEVANT TO YOUR ACCOUNTING + TAXATION NEEDS.

- **SMALL TO MEDIUM BUSINESSES** • **SELF EMPLOYED**
- **INVESTMENT PROPERTIES**

www.tacts.co.nz

ph:073628902 | e:chris@tacts.co.nz

fax:073628903 | m:0272102035

FRIENDLY • FOCUSED • FLEXIBLE



Warm Stones And Massage Really Beat The Chill

Massage is good for you. Even better—combine it with warmed stones, and you'll experience bone-deep soothing heat. My clients say they feel relaxed yet refreshed—and warmed right through after a hot stone massage! Come and look after yourself this winter.



Carol Bannister,
Careem Wellness Spa
Ph: 362 8878 www.careem.co.nz



Winter Special for Locals
FREE upgrade on therapeutic massage to include Hot Stones to your back, neck and shoulders.

PLUS: Buy one hour and get 30 mins **FREE**

Available through June & July

**I keep the clinic really cosy
because I care about you.
So Book Now!**



**first
national**
REAL ESTATE | Rotorua



**Are you keen to sell your home
but feel like you are
'Flip Flapping' about?**

**Then it's Time to STOP 'Flip Flopping'
and get yourself out of troubled water.**

**Whether you are a 'Prize Trout'
bit of a slab or the perfect catch,
it's time to pull in the "Lines".**



**Call Cathy Lines for a
no obligation Appraisal!**

**She won't give you any fishy stories, just
good ties to netting the best catch!**

Cathy Lines

Lake Tarawera & Lake Okareka

07 362 8112

021 033 7707

cathy@rotoruaproperty.co.nz



Rat Bait and Bait Stations - Winter 2013

Is your property lakeside? Or does your property back onto a bush reserve? If you have answered YES to either of these questions, then you should seriously consider purchasing a bait station, and becoming part of the “Rat Bait Brigade” here at Lake Okareka. Landcare Okareka is managing the rat bait for the village residents and property owners. This is run to support the Forest & Bird volunteer managed pest control programme in the Lake Tikitapu Scenic Reserve. Now is the time to target animal pests like rats and possums, before the birds begin nesting.

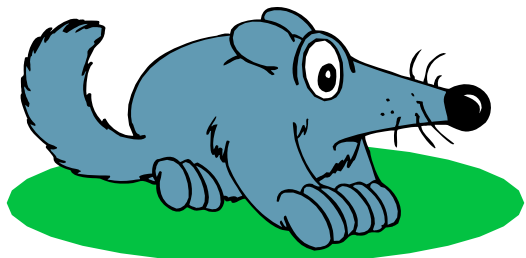
This year however, there will be no rat bait laid in the Tikitapu Reserve, and it will be interesting to see what happens with the rat population in the village. Bay of Plenty Regional Council and Department of Conservation have suggested that Forest & Bird give the bush a spell from bait this year.

Ditrac rat bait provided by Bay of Plenty Regional Council is however, once again available to individual property owners, to support enhancing the biodiversity at Lake Okareka. We are especially interested in getting more lake side properties involved with rat bait stations. We believe that the results Lake Tarawera are getting with the increase in numbers of dab chicks could be due in part to their successful rat bait programme. They have many lake-side properties there involved. If you are interested, but maybe feel that you do not come to your property often enough to keep the bait station full, please contact us. We may be able to work out a partnering system with someone who lives here permanently, and is prepared to keep your bait station filled.

Ditrac is a poison, but it does not cause secondary poisoning on cats, dogs or birds such as moreporks if they eat poisoned rats or mice.

How to Use Ditrac Bait:

It is recommended that bait be fed in a type of bait station, fitted with a locating rod, that does not allow the rats to carry baits away to be stored. The baits have holes in them and they thread onto the rod. Rats and mice eat the bait in the bait station. The bait station protects the bait from the weather. It means also that bait cannot be eaten by non-target species such as birds, dogs, cats and children.



Bait stations are available by contacting Mike and Sandra Goodwin 362 8865 or email sgoodwin@actrix.co.nz – made by Bob Scopes from Tarawera and cost is \$35. Marcel van Leeuwen, a Lake Okareka local resident is also making bait stations, cost is \$20. Contact Marcel on 362 8468 or email marvl@xtra.co.nz to order them.

Do you have a bait station already? That's great if you do. When you collect your bait you will need to confirm your name and address and the address of the bait station. We need to update our data base about bait stations and where they are located throughout Okareka – and many thanks to everyone who has done this so far.

How do I get bait now? Bait is available in labelled, zip lock bags, containing 12 rat baits. This is enough bait to fill one bait station 2 times during a month. Bait stations should usually not be filled more than twice during a month, otherwise you are wasting bait and feeding potentially dead rats and mice.

If you require the bait or a Bob Scope bait station for \$35, please contact Mike and Sandra Goodwin phone 362 8865, 2 Pryce Road or Rod Stace phone 362 8523, 30 Summit Road.

Please phone first to arrange a time to collect bait or a bait station.

Timm's Possum Traps - June 2013

These Bay of Plenty Regional Council funded Timm's possum traps, are available on loan to any Lake Okareka residents, if you contact Sandra & Mike Goodwin 3628 865. The Okareka community has 10 traps which were funded as “loan traps” by Bay of Plenty Regional Council. These traps have been borrowed at various times by members of the community. If you are having possum problems – maybe eating fruit or flowers or they are making a nuisance of themselves at night – and you would like to borrow a Timm's trap, give us a call.

We will provide you with some instructions about how to use the traps. We will also give you some advice about what seems to work best as “bait” - such as apple with cinnamon, or apple and peanut butter. Please keep a note of any possums caught and pass that on to us when you return the trap. We like to know for our records what is being caught around the place and we can also pass that on to the Regional Council.

For more information or to borrow a trap, please contact Mike and Sandra Goodwin 3628 865.



LANDCARE OKAREKA—JUNE 2013

Landcare Okareka volunteers have spent the past few months undertaking several different kinds of Working Bees since the start of 2013. Thank you to everyone who has come along to help with these. The Working Bee in February saw LO volunteers complete the gravelling of the upper section of the new walking track from Ridge Road down to Loop Road. Now that there has been some rain, the track seems to have compacted well and it is getting lots of use. Thanks to the Justice Department teams of workers for helping with spreading the gravel, to Guy Gaddum for carting and later rolling the track surface, to Elizabeth Wood, Roading Engineer from RDC for her help, to Rotorua Quarries for supplying the gravel at no charge, and to all of the Landcare Okareka volunteers who helped in any way with this project – a great team effort!

In March the LO Volunteers travelled down to the area near the shade shelter, along the Lake Okareka Walkway by way of Dennis Falconer's barge (Thank you Dennis for the loan of the barge – it is of great assistance with these working bees along the walkway). We went to try to build some low rock walls to protect the lake banks, especially near the shade shelter. The high lake levels have eroded the banks in many areas around the lake. Let's hope this work will help in future.

April's Working Bee found Landcare Okareka volunteers working in the Tau-maihi Reserve, at the end of Acacia Road. Representatives from Landcare Okareka had spoken to Dept of Conservation Flora Ranger in the Rotorua Lakes Area office, Paul Cashmore, and to the Lebuia Lake Lodge Manager Mon, to get permission to undertake weed control work here. We were working in the lakeside margins of the mown area, where weeds like jasmine, montbretia, broom and cotoneaster were taking over. This is just the beginning of more work that will be carried out over the coming year or so, once the weather warms up again.

Some Landcare Okareka volunteers also assisted the Castlecorp arborist team to take down and remove some dead kamahi trees along the walkway, near the Remembrance Grove. Once again we had the use of Dennis Falconer's barge. Many thanks again to Dennis for the use of the barge.

Now we are in winter, planting tasks take precedent. We have re-planted toilet gardens at Boyes beach and Acacia Road – and built a path to those toilets. We will be working on the toilet gardens at Steep Street reserve and the bush line toilets at Lake Tikitapu. If you would like to help watch out for the sign boards and come along. You will be most welcome.



Winner of Bay of Plenty region Weedbusters Award 2012



*Landcare Okareka volunteers completing the new planting at Boyes Beach toilets.
L to R: Rod Stace (using the rake) with Mike Goodwin and Brian Law in background.*



New planting and path outside Acacia Road toilets.



Lake Tarawera Playcentre

Lake Tarawera playcentre is situated at 10 Alexander Road, and during term time we have sessions on Monday and Thursday 9.30 am – 12.00 pm. If you want to find out more about our parent run early childhood education service – for children from birth to age six – please read on.

Our family dinner was a great success last term. It was nice having the Dads around and also the support of the extended family and some past playcentre members. Everyone had a lovely time, the kids had a nice play and food was excellent, so thanks everyone who came along.

The theme chosen this term is “Contribution” - Mana Tangata - one of the strands of Te Whariki that involves equal learning opportunities and each child’s contribution is valued. Our children so far have enjoyed helping baking bread, scones and making playdough. Lots of learning always happens in the sandpit with endless water systems being developed lately, despite the recent weather conditions.

Please feel very welcome to come and visit. We would love to have you share in the learning of our children and our wonderful centre.

Feel free to contact us by email tarawera.playcentre@gmail.com or phone us at 3628748 or at 3628055 during session times.





3D MULTI SPORT EVENT—SUNDAY 2ND JUNE 2013

This was an extremely well organised and supported event, organised by Neil and Katrina Gellatly from Lynmore, Rotorua. This year the paddling section was held on Lake Tikitapu (Blue Lake) as the event had outgrown the parking available at Lake Okareka, where it has been held over the two previous years.

Many Lake Okareka locals assisted Neil with the running of this event. Three boats with their local skippers and an assistant each, were on the water at Lake Tikitapu to provide safety and support for the event organisers and the paddling participants. Meanwhile, on land twelve locals from either the Lake Okareka Community Association or Lake Okareka Fire Force acted as volunteer marshalls.

For six of these people, this involved parking the participants, their supporters and general spectators, vehicles at Lake Tikitapu. Once the event was underway, some of those parking marshalls became transition marshalls where the participants came off the water and climbed onto their mountain bikes to head up Tikitapu hill to get into the forest for the mountain bike leg and then the running section.

The other 6 volunteer marshalls worked in the Redwood Forest parking cars, with 3 moving off to help with marshalling road sections of races below the pumice cliff on Tarawera Road and the hill section of the biking leg of the Triathlon coming from Tikitapu up the hill to access the forest.

It was also good to see several Lake Okareka locals represented in some of the races held as part of this 3D event. All involved felt that Lake Tikitapu offered an ideal place for the event with plenty of areas for parking and good spectator viewing of the paddle section.



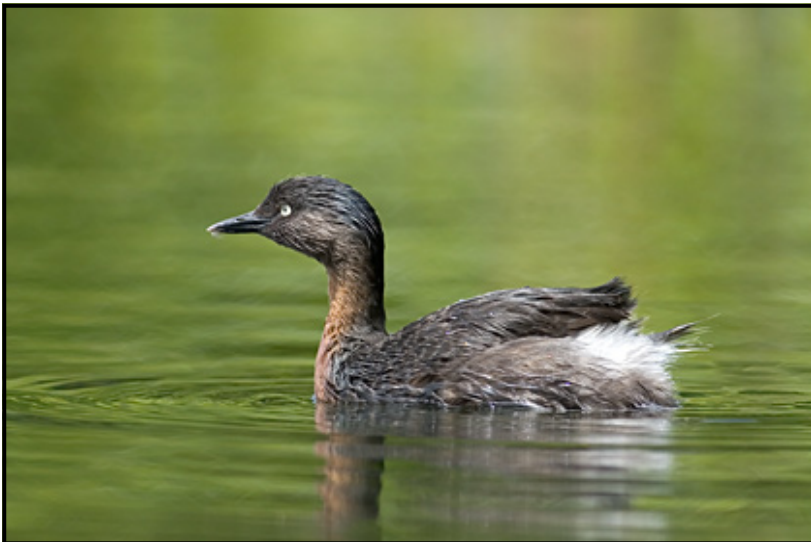
DABCHICK SURVEY

Recently a group of locals took part in the DOC 2013 Dabchick count which was being conducted across lakes in the Rotorua area. The purpose of the count is to enable DOC to get an estimate of the number of the birds in the district.

The Weweia, New Zealand grebe, is a small endemic water bird which is widespread in the North Island on lakes, dams and oxidation ponds, the population is estimated to be between 1700 - 1800. The birds are believed to be extinct in the South Island. The birds are a threatened species and are vulnerable due to habitat loss, mammalian attack and disturbance during the their breeding season.

Three counts were conducted at Okareka in April (14th, 21st & 25th) the counts revealed 53,42 and 36 birds. Most of the birds were observed between the Acacia Road peninsula and the outlet with remaining birds being mainly counted between the jetty and the DOC camp. The count would not be possible without the boat owners Rod Stace, Dave Scott, John Battersby and Meryl Keighly; and the spotters Liz Harding, Sandra Goodwin, Bill Keighly, Katy Hodgson, Lydia Hale, Heather Pearson and Mike Vincent. At the time of writing DOC have not advised of the total count number for the Rotorua lakes. The next count will take place in August at the beginning of the breeding season along with a rat baiting program which will be put in place around the lake.

If you would like more information or wish to help please contact Mike Vincent on 3628 376.



LAKE OKAREKA PRESCHOOL—MAY 2013

Welcome to our new children and their families who have joined us this term. Farewell to Lauren Carter with Mum Natalie and Dad David. Farewell also to those children who have graduated to Lymore school—Theo Bennett, Liddy Zuidmeer, Danny Wilson and Nirai Raureti—Mikaere. Special thanks to Aly Bennett, Harm Zuidmeer, Mark and Lisa Wilson for their contributions to Preschool. Happy school days.

Preschool AGM Thursday 20th June at Preschool

Have you considered being part of the Preschool Board? As a Board Member you have the support of the members and teachers in governing Preschool. The roles are varied pending on the role type and experiences. There is a monthly meeting of usually two hours and opportunities to work together to govern Preschool. Nominations are now open for Board positions such as Chairperson and Secretary. If you think you may have the skills to share with the Board whilst being involved in your Preschool please speak with one of our Board members.

The teaching team attended the Early Childhood Council Conference at the Events Centre on Saturday 25 and Sunday 26 May. This weekend was packed with exciting workshops about partnerships with parents, ERO reviews, ideas using iPads and Tablets in ECE and much more. Preschool parents and teachers completed the satchel packing for the Conference and raised \$300 for resources for the children. The teachers purchased some new dinosaurs and puzzles.

On Thursday 23rd May we had a bus load of Early Childhood teachers from all over New Zealand, China and Australia come to Preschool for a short visit as part of the Conference Centre Tours. We are pleased to be included in this tour promoting our rural Preschool as part of the Rotorua Centres Tour. This visit gave us a great opportunity to welcome our visitors with a song and some fresh baking.

Upcoming events

- a show put on by Capital E which covers learning about the Seasons
- A trip in June/July to Lynmore School for the children at the extended session
- A trip on the Yellow Duck which has been changed to term three
- Visit from the Dental Nurse on Friday 21st June who will teach everyone about caring for their teeth.

We really appreciate the support from the community to recycle cardboard and paper. This not only reduces our carbon footprint, it also helps our funds. Special thanks to Yellow Duck Tours and Early Childhood Council.

For enquires please call Debbie now on 362 8606 or after hours 345 9136.

Email: debbie.hayward@lakeokarekapreschool.co.nz

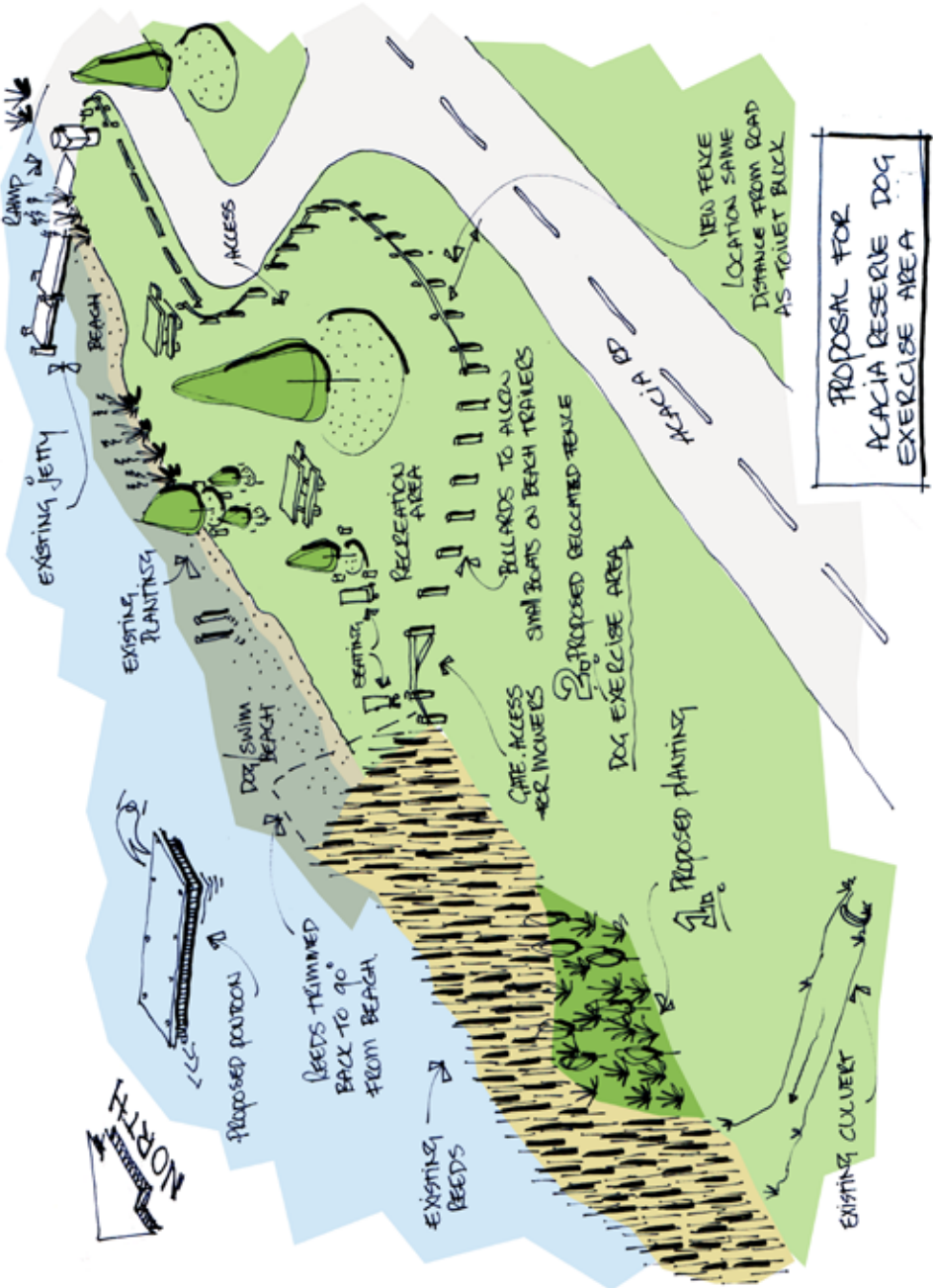
Website: www.lakeokarekapreschool.co.nz like us on facebook © Lake Okareka Preschool



The children are enjoying learning Spanish with Karina on Wednesdays. They have already learnt Incy Wincy Spider, greetings and some numbers.



We have a new garden planter thank you to Tony Horton. The children are awaiting the flowering of their new garden plants.



LOCA PROPOSAL FOR ACACIA ROAD RESERVE AREA

The Acacia Road lakefront reserve area has been discussed for well over 2 years now by a couple of LOCA Committees. Some of the reasons that the area has come under scrutiny have been the “scruffy” appearance of the area, with long grass and weeds along the edge of the lake front. This area is very public, with Rotorua Duck Tours amphibious vehicles making numerous visits throughout the year. It is also visited by many other travellers both local and overseas and is well used throughout the year by locals, especially those with dogs, as it is a dog exercise area. Other aspects of discussion for this area have related to safety – parents watching children in swimming and the plants along the lake edge have prevented good visibility at times, and swimming and jumping in off the jetty when boats are using the jetty and ramps has given cause for concern.

One of the first things which was done in this area was the reduction of signage – some of you may remember that a third large round pole was installed for more Bay of Plenty Regional Council signage. Some may also remember BOPRC signs that “sprouted” up next to the round pole. LOCA negotiated with Rotorua District Council for the removal of the 3rd round pole, but we had to give up the Lake Okareka community noticeboard panel.

So instead we asked the community about the location and design of a new noticeboard. The majority feed back that came in was for a new noticeboard that looked similar to the BBQ shelter and that it be located along the low fence line near the toilets. LOCA then approached RDC to ask for permission to put the noticeboard up. RDC staff agreed and made a contribution of \$500 towards the sign; LOCA paid for the balance. LOCA hopes to get this sign board covered in toughened glass sliding panels inside an aluminium frame in the next couple of months. On the back of the sign we hope to have some information about the Lake Okareka area e.g. history, local birdlife, etc for locals and visitors alike to read.

This new plan for the Acacia Road lakefront area has been drawn up by LOCA Committee member Harm Zuidmeer, with support from the majority of the LOCA Committee members. It is based around some of the feedback we have received from the Lake Okareka community over the past year or so.

This area will definitely still remain as a dog exercise area.

We appreciate that this a very social and special area for the people from that end of Acacia Road, Benn Road, and Wattle Grove. It is also well used by people from the nearby section of Loop Road, Summit Road, Branch Road and Ridge Road. What this proposal would do, is create a bigger space that can be used by the walking, swimming, and picnicking locals and general public – and their dogs - away from the jetty and launching area.

By trimming back a few metres of the reeds and by also providing a pontoon off from the beach in this area, LOCA hopes that this will draw those who use the jetty for swimming and diving off away from it and make the area a whole lot safer. The proposal shows the fence on the Loop Road end of the reserve shifting a bit to take in the large liquid amber tree for shade for people and dogs using the area, with some more bench seats. The bollards would be placed with enough space to allow small boats and people with dogs to easily pass through. There could also be some wetland planting into an area that is quite damp but does not grow reeds. *Carex secta* and *Cyperus ustulatus* would be suitable wetland plants for this area.

The LOCA Committee would like to thank everyone who has had a hand in the recent tidying up of the Acacia Road lake front area. Old water pipes have been removed from the lake bed and taken away, trees have been weeded around, the long grass and weeds have been either pulled or cut back from the lake front. The toilet block lake facing garden has been re-done and a path created to get to the toilets. Castlecorp have come in and removed the wire netting cages and put in low post bollards to protect the trees from the mowers. A new tupelo tree will be planted where the 3 struggling kowhai were. A tupelo does not mind having wet feet for long periods of time, it will become a large shade tree, create autumn colour along the lake front area and lose its leaves to keep the grass growing underneath over late autumn/winter/spring until it's leaves return.

The LOCA Committee is seeking written feedback from the Lake Okareka community to this proposal – either to P O Box 6210 Whakarewarewa or to the Lake Okareka Community Assn website email address found at www.lakeokareka.org **before the end of June 2013 please.**

If the LOCA Committee receives sufficient support from the Lake Okareka community for these proposals we will then need to seek permission and support from - Rotorua District Council, Bay of Plenty Regional Council, Te Arawa Lakes Trust, Dept of Conservation, Fish & Game Eastern Region - to undertake the following:

- removal of a few metres of reeds to square the end of the reeds off from the Loop Road end of the gate on the fence
- building and location of a pontoon off the beach
- more seating (especially bench type) on the reserve
- relocation of the low fence and bollards as shown on the drawing

Please send us your written feedback to the addresses above.

Sandra Goodwin

Secretary

LOCA

Enjoy a European River Cruise



Earlier this year I spent 7 nights on an **APT Rhine River Cruise** sailing from Amsterdam to Nuremberg. I arrived into Amsterdam the Friday before the royal inauguration so the city was humming with both locals and overseas visitors, creating a fantastic atmosphere and my chance to experience a real slice of Royal Dutch history. Being spring, the Keukenhof Gardens were a mass of spectacular colours and blooms.

Our home for the next 7 days was the very comfortable AMA Amadante river cruiser. Sailing along the Rhine was relaxing and enjoyable. We stopped to visit small medieval villages and large cities. History unfolds before your very eyes, castles and castle ruins are perched above the villages, and the vineyards - that have been there for centuries - cling to the hillsides. The shore excursions in each destination brings the history to life.

In summary - great food, incredible scenery, friendly and knowledgeable staff, a range of excursions to suit your fitness level and only 150 people onboard. No rushing and no getting up to pack the bags each day - the best way to travel.

I would be delighted to provide you with more information on river cruising or indeed any travel you may be contemplating. Cheers, Donna.

HOUSE OF TRAVEL

VETRO

MEDITERRANEAN FOODS

1131 Amohau Street, Rotorua

Ph: 07 346 0081

Email: jen@vetrorotorua.co.nz

www.vetro.co.nz

**Open 6 days &
7 days over the
summer**



VetroRotorua



**ALL THOSE HARD TO FIND INGREDIENTS
AT EVERYDAY LOW PRICES**



Surveyors
Planners
Cartographers

SURVEYING • MAPPING • PLANNING

Receive the benefit of professional surveying, planning and resource management advice.

- Boundary Surveys, building setout
- Resource Consents
- Consultation
- Lakes A Zone rules/policies



Phone either Jason Ward or Mark Dyer for local, professional and practical advice.

Rotorua
1180 Amohia Street, PO Box 396
Rotorua 3040, New Zealand
Freephone **0800 2 SURVEY**
Phone 07-349 8470, Fax 07-347 6652
www.canmaphawley.co.nz

Whitianga
33 Albert Street, PO Box 379
Whitianga 3542, New Zealand
Phone 07-886 5777,
Fax 07-885 5581



Make your dream home a reality with us



**Millennium
Architecture**

Millennium Architecture Ltd
web www.millarch.co.nz
Studio 2 Blinn Road Lake Okarewa
phone 073628775
fax 073628774
mobile 021356723
email jason@millarch.co.nz

Chris Smith
glass
professionals



CALL 07 348 5038
24 Hour Service

www.chrissmithglass.co.nz

- Splash Backs
- Frameless Showers
- Window Maintenance
- Glass Balustrades
- Window Tinting
- Mirrors
- Retro Fit
Double Glazing
(to Existing Wooden Joinery)

91 Riri Street, Rotorua
info@chrissmithglass.co.nz

THE LEWIS PLUMBING COMPANY

*Registered Craftsman
Plumbers & Gasfitters*

Ph: (07) 343 9060

57 Tallyho St, Rotorua

jon@lewisplumbing.co.nz

www.lewisplumbing.co.nz



LAKE OKAREKA CIVIL DEFENCE

Dear Okareka Residents

The Lake Okareka Community Association (LOCA) has been charged by the Bay of Plenty Civil Defence Emergency Management Group with forming a Lake Okareka group to help in the planning of our area's response to civil defence emergencies.

Our goal is to gather the resources and expertise available in our local area of Lake Okareka and to form a response plan to help deal with emergencies when they occur. One crucial tool of our preparedness plan is our resident registry. In the event of an emergency, the registry will enable us to locate area residents.

Okareka Civil Defence (OCD) is currently being established and working towards our own Civil Defence Resident Register. Forms will be distributed throughout the community by a Street Contact person. Alternatively, this can be submitted online through the Lake Okareka website.

The information gathered on this form is to be held securely by Okareka Civil Defence and Neighbourhood Support which is only made available once a Civil Emergency has been declared and information is required.

Further details of our plan will be made available as they develop. If you would like to get involved in our efforts, please come to a planning meeting. Meetings will start to occur regularly and upcoming meeting times will be posted on our website and via the LOCA Newsletter.

Please consider adding your family's information to the registry.

Lake Okareka Civil Defence Co-ordinator (Acting)

Lyall Beuth

7 Acacia Road, Lake Okareka, R D 5, Rotorua 3076

Phone: 07 362 8459

Email: twobeuths@xtra.co.nz

www.lakeokareka.org/okareka-civil-defence

Holiday home rentals made easy.



*...it's all
taken care of*

0800 42 22 42 | bachcare.co.nz



C A P E R S
E P I C U R E A N

Breakfast
Lunch
Dinner

Ph 348 8818
www.Capers.co.nz



Winter Hours

Monday and Tuesday Closed
Wednesday to Sunday 10am till Late

P: 07 3628502

E: info@thelandinglaketarawera.co.nz

W: www.thelandinglaketarawera.co.nz

WARNING: PET POISONING (by non-Ditrac Rat Bait)

Recently there have been a couple of incidents with 2 dogs in the Lake Okareka community being poisoned by Rat Bait. To prevent secondary poisoning of non target species please **USE ONLY DITRAC BAIT in an urban environment**.

Baits obtained from supermarkets, hardware stores and garden centres such as Storm and Talon contain a toxic ingredient called **brodifacoum** that causes secondary poisoning in non-target species such as cats, dogs and birds such as owls.

Brodifacoum is a highly lethal vitamin K antagonist anticoagulant poison. In recent years, it has become one of the world's most widely used pesticides. It is typically used as a rodenticide but it is also used to control larger mammalian pests such as possums. Rats and mice which have eaten these poisons can move some distance away before they die. Rats and mice which have eaten these poisons containing the second generation poisons, can be very harmful to dogs and cats which might eat them.

Brodifacoum has an especially long half-life in the body, which ranges to several months, requiring prolonged treatment with antidotal vitamin K for both human and pet poisonings. Because brodifacoum has these very dangerous characteristics, Bay of Plenty Regional Council do not recommend it for use in situations where there are domestic animals, and humans living nearby. That is why we have **free Ditrac bait** available at Lake Okareka – it is a poison also and must be handled responsibly.

Ensure your rat bait is put into a proper bait station, no matter what the brand or active ingredient. Broadcasting or placing baits in an open situation, even though on your own property, is not a responsible way to dispense poison.

Bait stations for Ditrac at a cost of about \$35, are available through Mike and Sandra Goodwin phone 3628 865 or Rod Stace phone 3628 523. Ditrac bait from the Regional Council is also available from these people. Please phone first, to arrange a suitable time to collect bait and /or a bait station.

Kirsty Gerlach Audiologist MNZAS
1071 Hinemoa Street, Rotorua



kirstygerlach
HEARING
caring for your hearing

- Personal caring advice.
- Latest technology.
- 20 years experience.

call Kirsty today on 07 343 6669

bookabach

Recognise this logo?

It is the most up to date and forward
thinking website for

HOLIDAY RENTALS

Norman Donald with his

2LAKES REAL ESTATE (REAA 2008)

is offering you the opportunity to have him list
and manage your property on

bookabach

(with no Bookabach annual sub fee!)

To have Norman start your property
earning you an excellent extra income

Call him now: **07 3628056, 0274 950189**

norman@2lakes.co.nz

TIKITAPU SCENIC RESERVE PEST CONTROL PROGRAMME

2013 has started well with Controlled Substances Licences being renewed and another 10 people in the Rotorua area completing a course to acquire their licences. All funding was from Bay of Plenty Regional Council. Several volunteers have attended a first aid course provided by the Department of Conservation.

New updated maps are completed, showing the changes to bait station numbers and realignments to some lines and tracks.

A preliminary trial indicates the presence of bats in the area. Expert assistance is being arranged to determine if they are present, and if so, to help with a survey.

The Bird Count survey done in November has shown an increase in both the species and numbers of birds present in the area. The survey will be repeated for the next few years.

The Mistletoe and Nature walks have been checked each month by those on the roster.

This project would not happen without our volunteers. Thank you to all who have been involved last year and we look forward to another successful pest control year in 2013.

Programme for 2013

Trimming lines and checking stations etc.

Friday June 14 & Sunday June 16

Sunday July 21 & Monday July 22

Friday August 16 & Saturday August 17

Week of Aug 31 to Sept 8 - monitoring

Tues Sept 10 - pack baits

Fri Sept 13 & Sunday Sept - baits out

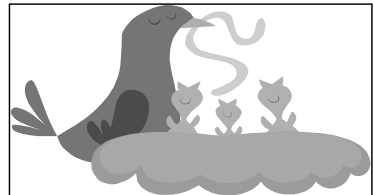
Fri Sept 27 - clear stations either side of Nature Walk

Weds Oct 30 - pack baits

Sat Nov 2 & Mon Nov 4 - top up all stations as required

Sunday Dec 8 & Mon Dec 9 - clear all stations.

Sat Dec 14 to Dec 21 - monitoring



New volunteers are always welcome and if anyone is interested in being involved in the pest control programme, or going on the roster to check the Nature and Mistletoe walks please let me know.

Frances Blakely

Phone: 3628 480

Email: blakelys@xtra.co.nz



Registered Valuers

** For all of your property valuation needs **

- Commercial & Industrial
- Residential
- Lakes
- Lifestyle & Rural

**Trinity House, 1268 Haupapa Street, Rotorua
PO Box 2081**

ph: 07 347 6001 email: info@cgj.co.nz

www.valuersrotorua.com



INVESTING IN PROPERTY?

We offer a full range of
accounting services
for all sized businesses

Be sure to call us to discuss

- Ownership structures
- Tax deductibility of expenses
- Mortgage Security & Tax implications

MACMILLAN ACCOUNTANTS

31 White Street, Rotorua Phone 350 1018

CLASSIFIED ADVERTISEMENTS

Sharpen your chainsaw on my electric grinding gadget for free or I will do it for \$5—**phone Bryan on 3628 224**

Pet Feeding Services - Pet feeding services over the holiday season and throughout the year, \$5 per visit includes indoor plants watered and mail collected. Limited boarding pens may be available—**phone Carol on 3628 702**

Heather Horton (Artist) - Watercolours, Oils, Pastels and lead-lighting work can be seen in the studio. Works are for sale, or can be ordered—**phone 3628 165**

Trees felled for free - Conditions apply—**phone Chris 3628 679 or Peter 3628 108**

Mobile Library visits every 2nd Monday at the bus stop opposite 19 Loop Road from 3.25pm to 4.10pm.

Cleaner wanted for holiday home at Lake Okareka - we need someone to prepare holiday home prior to guests arriving and to clean on their departure. General house cleaning including washing linen as well as spa pool filling and emptying. Prefer someone local. Please contact Adele via email on guran@usa.net if interested.

Trays made of recycled rimu - three sizes: 270x375 \$30, 310x450 \$40, 360x510 \$50 - phone Bryan on 3628 224.

Dry Blue Gum—only \$80 per m3 delivered to Lake Okareka/Lake Tarawera. Minimum of 2m3 for free delivery. Phone Ngaire 345 7488 or 027 460 7056.

BK Transfers and Shuttles—24 hours shuttle service and personalized service to Auckland, Hamilton, Tauranga, Taupo and Rotorua cities/airports. Phone Graeme 3628 867 or 027 3628 867

EVENT INFORMATION JULY 2013 to OCTOBER 2013

Start Date	End Date	Event	Where
07/09	08/09	Canoe Racing NZ	Lake Okareka
12/10	13/10	Canoe Racing NZ Club Day	Blue Lake
19/10	19/10	BOP Rowing Regatta	Blue Lake

Events & Venues Rotorua Community and Major Events Team manage all reserve booking for events that happen in Rotorua. They also meet regularly with the BOP Regional Council to discuss and coordinate events happening close to and on all of the lakes in the region. Both organisations appreciate the impact events can have on the location they are held, both positive and negative. If you have feedback that you would like to offer or you wish to discuss events happening in your area, please contact the events team at Events & Venues by calling the Events Manager on 073518654 or by emailing major.events@rdc.govt.nz



Call and see Sean
and the team at
TELFER MARINE
for all of your boating
requirements:

- ☀ Boat servicing and maintenance
- ☀ Large range of chandlery
- ☀ New and used boat sales



236 Te Ngae Road, Rotorua, New Zealand. Phone: (07) 345 9854
Fax: (07) 345 9857 Email: sean@telfermarine.co.nz



THINKING OF SELLING?

If you are considering selling, call me and I will discuss with you the best method of marketing your property to take advantage of current market conditions.

I am committed to maximising the value of my clients' real estate assets.

For totally professional service, call me any time.



Jenny Donne
Mobile 027 385 0566 or Business 07 349 5356
jenny.donne@bayleys.co.nz

SUCCESS REALTY LIMITED, BAYLEYS, LICENSED UNDER THE REA ACT 2008

LAKE OKAREKA RESIDENT—DOT PICKERNELL

Dot Pickernell lives in “Pickswick” at the end of Acacia Road, a happy soul still spinning and making all sorts of things with wool from jerseys to mats. She will be 90 in December.

Dorothy was born an Anglican Vicar’s daughter in Drinagh Rectory in County Cork, Ireland on 19 December 1923, the youngest of four with older twin brothers and a sister Hazel whom she loved dearly. Her parents Rev James and Margaret Craig soon moved to County Limerick where she remembers a happy childhood at the lovely old rectory at Clarina. She was then sent to board in Dublin at the Anglican Church School for “Vicars daughters” where she shone at all things physical, especially hockey.

Having won a scholarship she went to train at Ling Physical Education College. Against her mother’s wishes she went to England and taught physical education at “Kirby Lonsdale” a rather posh school and it was while teaching there she met George. They were secretly engaged before he left for NZ. Mother didn’t approve of George. Dorothy followed George out to NZ and they were happily married in a dear little church in Hastings where George was currently working as an aircraft mechanic. Dorothy was teaching at Hukarere Girls School in Napier. This was a long day travelling from Hastings six days a week.

In 1961 Dorothy found the little cottage at the end of Acacia Road and she and George moved in, with little Sue aged one. James was born in 1963. Dorothy was the physical education teacher under several head mistresses at Rotorua Girls High School from where she retired after many fruitful years. The girl’s loved her and many old girls have fond memories to this day.

Dorothy was a foundation member of the Rotorua Spinning and Weaving club and still goes each Thursday to their meetings. How well I remember taking wool out of our woolshed to her in that original cottage and asking her to teach me to spin. She was so patient and kind even with a toddler and baby. Her grandmother taught her to spin as a girl.

Dorothy says she was brought up on hymns, songs and poetry and still sings along. Pop in sometime, she’s up at 9am and doing things with wool!

Written by Fenella Playne



