



THE NEWSLETTER

**Lake Okareka
Community Association (Inc.)**

January, February and March 2014
www.lakeokareka.org

The Newsletter

of the

Lake Okareka Community Association (LOCA)

Issue 1, March 2014

Issue dates: 20 March, 20 June, 20 September, 20 December

Copies printed: 300

Deadline for copy: 1st of the month of issue

Advertising rates per issue: Quarter page \$25, half \$40, full \$70

Classified adverts: Free for 1st listing/free items (4 lines)

Editor: Maria Haines—phone: 3628 960 email: mariaanddean@xtra.co.nz

Your Committee:

Geoff Palmer **Chairman** **3628 379** (Chairman Rotorua Community Board)

Sandra Goodwin **Secretary** **3628 865**

Bryan Walford **Treasurer** **3628 224**

Lyall Beuth **3628 459** **Marcel Van Leeuwen** **3628 468**

Ian Potter **3628 556** **Carol Christian-Price** **3628 702**

Chris Russell **3628 030** **Cheryl Lyons** **3628 790**

Matt Harvey **3628 971** **Harm Zuidmeer** **3628 178**

Mike Vincent **3628 376** **Katy Hodgson** **3628 857**

DISCLAIMER STATEMENT

The views and opinions expressed in this Newsletter are not necessarily those of the LOCA Committee.

Front Cover:

Lake Okareka Tennis Club budding champions. Junior 4pm session - first of three age level sessions Friday afternoons, spring and autumn.

See page 25 for more information about the Tennis Club.

CHAIRMAN'S UPDATE—MARCH 2014



Greetings from the LOCA committee and a very low level Lake Okareka (as are all the other lakes in the region).

Our AGM in January was well attended as you will see from the minutes included in this Newsletter and there was some robust discussion on a number of issues. Two of last years committee (Mike Bannister and Blair Gilbert) did not stand for this year but the rest of the committee are back again. Our thanks to both Mike and Blair

for their contribution and support and also to Megan Douglas who stepped down during last year. The rest of my report was included in the AGM presentation and for those people unable to attend the meeting it is a summary of 2013 and projects for 2014.

We have now completed our first full year managing the **DOC Okareka Camp Ground** off Millar Road and it is pleasing to report the financial return we receive from DOC has exceeded expectations and will be used in part to fund the walkway from Boyes Beach to the DOC camp ground and other environmental enhancing projects. The roster of volunteers managing the maintenance, cleaning, guest details and money collection etc is very efficiently organized by Sandra Goodwin to whom we owe a special thank you for the time and effort that goes into this camp. Support from Landcare Okareka volunteers has also been invaluable.

The Regional Council is continuing to evaluate the options to upgrade the **Outlet Structure** thru to Lake Tarawera and details are as follows:

- A closed circuit TV investigation of the outlet pipeline showed severe deterioration of surfaces and joints affecting hydraulic performance and the pipeline estimate of its remaining life is less than 5 years.
- The pipe from the outlet to the control valve is scheduled for replacement in the 2014 financial year and staff are currently finalizing cost estimates, detailed design and the consents required.
- Other control measures such as a weir are a possibility as is electronic replacement of the manual control valve.

We hope a more efficient outlet structure and lake level control will reduce erosion around the lake.

A major project for LOCA has been to improve the **Reserve Area** at the boat launch jetty area to ensure the possibility of accidents to swimmers and boats is minimized. To this end we conducted a comprehensive survey of residents and users of the area and plans etc have been detailed in our quarterly newsletters and on site meetings held with the District/Regional Councils, Te Arawa, DOC and the Harbourmaster. The multi use of the area and need to keep it aesthetically appealing has been a challenge and progress has been slower than hoped, however with safety issues, erosion problems and the rapid spread of Raupo, it is a priority for the committee.

A Telco consortium (Vodafone, Telecom, Chorus and 2 degrees) has identified a site for a **Cell Phone Tower** on Playnes Farm that will give mobile reception to Tarawera, Okareka and Tikitapu. A contract with the farm is still to be finalized and apart from the obvious benefits mobile coverage will bring to residents, tourists and the business commu-

nity, saving lives is a compelling reason for us all to support this project.

The continuing **growth of tourism and events** around the Lakes with more and more traffic over the summer holidays continues to be of real concern at the Blue Lake. We have asked RDC to consider speed limits, summer events etc in an effort to minimize the risk of accidents.

Once again we would like to draw attention to our concern that despite the PR spin from the Regional Council a TLI target of 3.0 for water quality at Okareka does not give us a **Clean Lake**. We will be 15% more polluted than Tikitapu, Okataina and Tarawera and 30% more polluted than Rotoma.

There appears to be no decision as yet on whether the large area of the noxious weed **Hornwort** will be eradicated or only contained by the Regional Council. Obviously any decision short of total eradication will be very disappointing. As a result of the Hornwort discovery there seems no compelling reason for the weed cordon to be retained if there is to be ongoing spraying of the lakebed and I'm sure many residents would welcome the removal of a "visual eyesore".

We also continue to be concerned at damage to the native forests in the area (Okataina in particular) caused by **wallabies/possums** etc and the resulting detrimental impact on water quality. Can we please have some action from the Regional Council and not more "research" as proposed in the Action Plan?

The Lake Okareka **Newsletter** is an excellent vehicle for us to update residents and owners of holiday homes on activities and matters of interest in the catchment. Advertisers cover the cost of printing and we are planning to go to full colour this year which will reduce the time involvement of our dedicated editor, Maria Haines. Maria has a full time job but puts in more than 30 hours on each of the quarterly Newsletters so it will be a win win outcome.

It is also pleasing to note the continuing involvement of **Volunteers** with Landcare Okareka, the LOCA website, Okareka Fire Force, Lake Wardens, tennis courts (60 juniors), fishing competitions, Forest and Bird activities, neighbourhood support and of course the very popular Pre School.

We look forward to 2014 with Rotorua having a new Mayor and CEO already consulting with residents on a long term vision for the District. Affordable rates, new property valuations and changes to the District Plan will all be watched with interest.

The Lakes Community Board together with the ratepayer associations at Tarawera and Okareka are working with RDC on changing the opening hours at the **Tarawera Transfer Station** from two half days a week to 24/7 every day of the year. A very successful trial was in place over the summer holidays but changes are yet to be agreed to by Council.

Plans for the **Walkway** from Boyes Beach to the DOC campground have been "work in progress" for LOCA for more than 5 years due in part to the environmental requirements of DOC and the Lakes "A" zone but hopefully these have now all been signed off and we will be making a start this year.

LOCA has had a busy year and I am fortunate in having a very supportive committee. Thank you team and in particular Sandra our competent and tireless secretary.

Also thank you to the many residents and supporters who volunteer their services to help make Okareka a special place to live and play.

Geoff Palmer
Chair



ART WITH A VIEW!

LAKE OKAREKA

"DRAGON'S NEST" - 231 Millar Rd
Easter Saturday 19th April. 10am - 3pm
Beautiful Setting - Amazing Artists - Refreshments
Gold Coin Donation - Rain or Shine

PosterMyWall.com

Lake Okareka Pre School Group

Cocktail Party

When: To be advised

Where: At the Lake Okareka Community Hall

Dress Code : Cocktail Attire

\$50/pp

Ticket price includes

Snacks, two cocktails, great music and lovely supper.

Get a group of friends together and bring your own drink.

Let's celebrate and fundraise money for our awesome preschool.

There will be a silent art auction during the night, with stunning art from children and local artists.

Tickets available from Karina on 362 8748

Dr Ron Caughey Memorial Yacht Race 2014

A successful local yacht regatta was enjoyed once more on Lake Okareka. Many of the entrants were old timers from the community, some of whom had accumulated a history of multiple wins on the Race Cup. The first yacht race was held in 1974 and was established to take a leaf out of the Lake Tarawera New Year's Day regatta, the legacy for which goes back even further. In 1976 the race was officially set up in memory of Dr Ron Caughey, which makes this year the 38th annual race in the Cup.

This year the handicapping, refined by Bob van Boven, could not have been better suited to the gentle to moderate wind conditions enjoyed throughout the race. Ensuring the right handicapping is not an easy feat. With a collection of yacht classes in a Mark Foy start, there were only 19 minutes of elapsed time between the winning boat and the last one to cross the line. Almost to the end Bob, in his trusty Monarch 17, was tipped to cross the line first, but the fickle winds close to the finish line gave the lighter boats the last minute edge!

Congratulations to all entrants for sailing a great race – not many capsizes – and some good competition.

Special congratulations go to the first 4 place getters:

- 1st Place Harry Lusk Laser (first time winner and grandson of Dr Ron Caughey)
- 2nd Place Stuart Waite Hobie 14 (winner 2010, 2013)
- 3rd Place Nick Wrinch Laser (winner 2011)
- 4th Place Bob van Boven with son George and Dave Scott sailing a Monarch 17 (Bob was winner in 1992 and George in 1985)

Special thanks go to Mike Smith and to Denis Goodwin for laying the race course and for retrieving the buoys - a task they have so willingly undertaken over a number of years, and to Areti Metuamate for time-keeping.

Particular thanks also go to Sean Bowyer of Telfer Marine Ltd, 236 Te Ngae Road (cnr Hamiora Place) Rotorua for once more supporting the race and for donating a top quality adult inflatable life jacket as first prize. Sean is an Okareka resident, with a longstanding generosity to this local event.

We look forward to seeing everyone next year and to growing the base of young sailors – P's – Opti's – Starlings and more! And perhaps put 2016's race in the diary in anticipation of a party to officially celebrate 40 years of racing and community on Lake Okareka.

Thanks to Mike Vincent for supplying the Yacht Race photos.

*Michael and Michelle Smith sailing a Hobie 16 -
final boat to start, in the Mark Foy handicap.*



Lasers from left to right sailed by Harry Lusk, Nick Wrinch and Johannes Walker.



Dr Ron Caughey Memorial Yacht Race 2014 Results

Entry	Class	Start Time	Finish Time	Place
Harry Lusk	Laser 115949	2.30pm	3.36.36pm	1 st
Stuart Waite	Hobie 14	2.40	3.37.44	2 nd
Nick Wrinch	Laser 27153	2.30	3.37.50	3 rd
Bob van Boven	Monarch 17 1398	2.10	3.38.09	4 th
Dave and George				
Tim Wiseman	Laser 19876	2.30	3.40.02	5 th
Johannes Walker	Laser 31392	2.30	3.41.30	6 th
Craig & Henry Cunningham	Laser 158832	2.30	3.43.09	7 th
Graham Prestige	Laser	2.30	3.48.16	8 th
Michael & Michelle Smith	Hobie 16	2.55	3.49.13	9 th
Tom Cunningham & Alex Smith	Laser 30	2.30	3.55.13	10 th
Sharon Smith	Laser	2.30		DNF

Mark Foy start—wind conditions were light to moderate

Christine Caughey/Areti Metuamata

Tough competition and action amongst the lasers at the first mark





Harry Lusk receiving first prize from Christine Caughey with timekeeper Areti Metuamata in the background



Laser sailed by Harry Lusk

A Touch of Elegance

Beauty and Nail Specialist

Waxing

Acrylic Nail Enhancements

Shellac Gel Polish

Lash and Brow Tinting and Shaping



www.atouchofelegancebeauty.co.nz

13 Summit Road

Lake Okareka

ROTORUA

Phone Vana on

07 3628 007

email: atouchofelegance01@gmail.com



REGISTERED PROPERTY VALUERS

Since 1974

- Commercial & Industrial
- Residential (including insurance)
- Lakes
- Lifestyle & Rural

Trinity House, 1268 Haupapa Street, Rotorua
PO Box 2081

ph: 07 347 6001 email: info@CGJ.co.nz

www.valuersrotorua.com

PREDATOR TRAPPING AND WATERFOWL

In August last year DOC offered to the Dabchick counting groups at the Rotorua lakes rat/stoat traps that had been superseded by new versions. Lake Okareka was able to get ten of these traps which were placed around the lake margin of the jetty arm of the lake. Further traps were either donated (thanks Toni Withers) or purchased by LOCA from funds obtained as part of the campground management.

The trap lines have been extended to Taumahi Point and the beginning of the walkway. Regular checking, baiting and setting of traps has been done by Dave Scott, Mike Vincent, Rod Stace and Mike Goodwin. To date we have 26 traps in place and since September last year we have killed 68 rats and 11 hedgehogs.

A trap line is going to be established in the Miller Rd/Boyces Beach area and hopefully one on the walkway. DOC tells us that anecdotal evidence from Tarawera suggests that trapping makes a difference to bird numbers. This appears to be true as over the summer there have been regular clutches of ducklings, Scaup, Australasian Coots and NZ Dabchicks in the jetty arm. This is particularly good for the Dabchicks as they are a threatened endemic bird only found now in the North Island.

There are different ways you can help:

- Installing a bait station on your property
- Not destroying lakeside habitat
- Helping with running trap lines
- Assisting with bird counts

If you would like a bait station or can help please contact Mike Vincent (3628 376) or Mike Goodwin (3628 865).



KANGA
EARTHWORKS

• Dig • Drill • Flatten • Fill • Trench

Versatile Mini Loader

Peter Harding
Rotorua Operator

Ph: 362 8108
Mob: 0275 628 108
Email: kanga@kinect.co.nz



The Lake Okareka Volunteer Rural Fire Force

Well, it looks like summer is coming to an end. Now that the nights are getting cooler, it won't be long before we get back into the winter routine of lighting woodburners. So, if you haven't already done so, it would be a good time to get your chimneys swept as we have already had one local chimney fire just recently. Also, don't forget to check that your smoke detectors are in working order.

A big thank you to my members for their commitment over the summer months, as we have been rather busy with 17 call-outs since the New Year. For example, one week at the end of February saw the Lake Okareka Fire Force at Waikite Valley on Saturday afternoon, the lakefront on Saturday evening, Waikite Valley (a different fire) Monday afternoon and all day Tuesday, training on Wednesday night, Thursday night the Youth in Emergency Services programme, Friday morning yet another fire at Waikite Valley and a local call-out on Friday afternoon. Some of these fires have been long in duration and have also required aerial assistance. It was nice to have a quite weekend.

Each year, recently, seems to have an increase in fire activity. This highlights the need for a large membership base as the call-outs can be quite demanding, and more members ensures we can spread the workload not only during the day but on weekends and evenings as well. We do not operate on a roster system but rely on having sufficient members to ensure we have the numbers when called-out. This has worked for 30+ years as we have never missed a call-out. We have also recently lost a number of our younger members (temporarily) as they once again head out of town to university for the year. If you have thought about joining the Rural Fire Force volunteers then now would be a good time as the winter months provide ample opportunity for pre-season fire training.

Please continue to take note of the fire danger signage on Tarawera Road as this provides a good indication of fire conditions and don't forget that fire permits are still required for any fires outside.

For anyone wanting to contact the Fire Force, please phone me on 362 8874 or go to our website: www.okarekaruralfire.com.

Phil Muldoon
Chief Fire Officer

TAKE A WALK!

People have been talking. So the decision was made. We would “do” the walk at Lake Ta-ravera from Te Waioara to Hot Water Beach.

The water taxi was booked for a 4.30pm pickup at the end and we headed out - leaving at 8.30am. A good morning tea, drinks and lunch was packed, we wore our boots and took our walking poles – all of which we were grateful for. Taking a couple of fairly long breaks, we did keep to the timing that was on the signage along the way and arrived at Hot Water Beach at 3.00pm, in time to soak in the warm waters. So the 4-5 hours walking time seemed about right.

It is a great trek; the scenery is out of this world – forest, beaches, streams, lakes, mountains and birdlife. Chatty fantails encouraged us to keep going and clear out of their space.

Two hours into the walk we came to a very pretty area called ‘Twin Streams’. We were accompanied by a friend who turned back to go to work and he was very happy to have enjoyed a lovely walk whilst we carried on. We came across other trekkers from far afield as Australia, and they thought it was the best day walk they had been on. The trail was well made, clear and clean. There were toilets well placed with loads of paper (!) and stopping areas well thought out and made.

Cheerful water taxi driver Dave, was waiting for us at Hot Water Beach; he whizzed us back to the café and civilization amidst sprays of water and rainbows with the awesome big mountain as a back drop. A warm drink at the local café and then we were off home to re-live the walk with friends and family showing them numerous gorgeous photographs of our day.

We would like to suggest that you put it on your ‘bucket list of things to do’ and spread the word. You won’t be disappointed. Thanks to DOC and the local folk who made this track possible!

Connie-May and Lara-May Thorne



TIKITAPU SCENIC RESERVE PEST CONTROL PROJECT

The pest control programme in 2013 followed a different format than previous years, with the use of Feratox® (cyanide) strikers to target wallabies as well as possums, instead of Feratox® capsulated pellets in the bait stations with the Pindone pellets. This was done as a trial but unfortunately the results were disappointing. It appears that the possums ate much of the Pindone, but not enough to be lethal, and consequently the rats did not get enough to be lethal either. The strikers, which were put out after most of the Pindone had gone, were treated as toys by the rats which are cunning enough to destroy the strikers but not eat the Feratox® capsule in the potato starch. We did find a total of 13 wallabies and 37 possums by the striker stations.

The post baiting monitoring recorded a Rat Tracking Index of 42% and Waxtag Bite Index of 41% for marsupials, equivalent to 10% with the previous used Residual Trap Catch method.

At the recent meeting between Department of Conservation, Bay of Plenty Regional Council, and Tikitapu Forest and Bird Care Group it was unanimously agreed to bait this year. It had been hoped to reduce baiting to alternate years, but with the disappointing results last year, and the expected mast year this year, we will bait again. At this stage the programme has not been finalised but I expect we will start with the line trimming in May or June.

The bait stations have been cleared of the remaining bait and the striker remnants removed. However it is still important to observe the precautions on the next page.

The bird counts were repeated in November and the data will be compiled shortly.

Many thanks to all the volunteers who helped with this project in 2013 and we hope to see you back again this year. New volunteers are always welcome and if you are interested and would like further information, please contact me.

Frances Blakely—phone 362 8480 or email: blakelys@xtra.co.nz



Extract from the FACT SHEET

Important information

The pesticides used are effective and safe when properly handled. The use of bait stations allows for the pesticide to be made available to target pest species while at the same time restricting accessibility to native and non-target species. However there is a risk of poisoning to humans and non-target animals such as dogs if the bait is handled carelessly or eaten. Poisoning can occur through eating baits or poisoned animals.

The risk to dogs from pesticide in carcasses will remain until the carcasses have decomposed, which can be up to or more than six months.

These risks can be eliminated by following these simple rules:

DO NOT handle any bait

DO NOT allow CHILDREN to wander unsupervised in the treatment area

DO NOT bring DOGS into this area

DO NOT take ANIMALS for eating

The presence of Warning signs indicates that pesticide residues may still be present in baits or animals. The removal of signs will tell you that you can resume normal activities in the area. If in doubt, check with DOC.

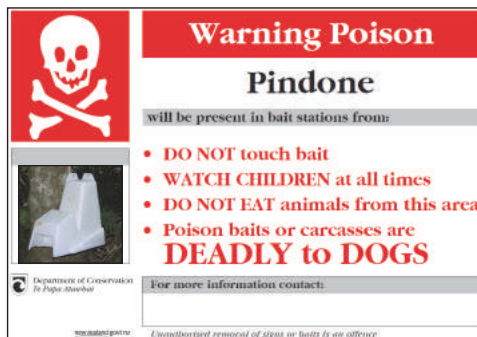
What do I do if I suspect poisoning?

Always contact your:

Local doctor, or

Local hospital or

National Poisons Centre 0800 764 766



Draft Minutes of Lake Okareka Community Assn Inc (LOCA) Annual General Meeting held in the Lake Okareka Community Hall on Wednesday 22nd January 2014 from 7.30 pm

Present: There were 26 LOCA members present and at least 12 visitors and invited guests.

Apologies were received from: Christine Caughey, Matt Harvey, Jane Nees (Deputy Chair BOPRC), Marcel van Leeuwen, Blair Gilbert, Cheryl Lyons, Cr Lyall Thurston (BOPRC), Dianne Walford, Judy Donnell, Krystyna Palmer, Peter Harding, Mike Goodwin (lateness).

It was moved G. Palmer / K. Hodgson that these apologies be accepted.

The following invited guests were in attendance and were introduced by Chairman Geoff Palmer:

Rotorua MP Todd McClay, RDC Mayor Steve Chadwick, RDC Deputy Mayor & Cr Dave Donaldson, BOPRC Chairman Doug Leeder and his wife, BOPRC Cr (and local resident) Neil Oppatt, John and Ann Green from Lakes Water Quality Society, and Rotorua Lakes Harbourmaster Pererika Makiha. Also present was Ray Pou-Poasa from Te Aurere Waka Ama Club.

LOCA Chairman Geoff Palmer welcomed everyone to the meeting. He pointed out that some may think there is a conflict of interest with him now being Chairman of the Rotorua Lakes Community Board and also of the Lake Okareka Community Assn. Geoff said he felt that the RLCB was a very efficient means for getting things done with RDC by the lakeside communities that are covered by the RLCB, and he makes no apology for the fact that he is Chairman of both groups.

Harbourmaster's Interim Summer Report: attached. Pererika Makiha said there was a very unfortunate start to the 2013/2014 summer with the drowning of a father, wearing no lifejacket and daughter wearing wrong sized life jacket, on the edges of Lake Tarawera. In saying this Pererika did think that water safety messages about either wearing life jackets or having enough of the right size on board, was getting across to boaters. There have been a total of 23 infringements and infringement warnings issued this summer for Lakes Tarawera, Tikitapu and Okareka. There have been 8 BOPRC infringement notices issued to jet ski riders so far this summer. All the usual offences like exceeding 5 knots in speed restricted area, no life jackets, no observer while towing, kayakers and paddle board riders with no life jackets. He is always looking for more volunteer wardens. The public can make complaints and Pererika listed the required information. The paid Harbourmaster's team are doing life jacket surveys over summer – so far 510 boats have been checked and people on board spoken to. Geoff Palmer thanked Pererika and also confirmed the good work being done by volunteer lake wardens.

The Minutes of the 2013 AGM of LOCA were confirmed as a true and correct record. Moved G. Palmer / K. Hodgson – carried. There were no Matters Arising.

LOCA Chairman's Report was presented by Geoff Palmer.

Main points of this report:

DOC camp: has been a very successful year with income from the camp exceeding \$60,000. An analysis of campers' nationalities shows around 30% to be from NZ, the rest are tourists from a huge range of countries. Geoff thanked everyone who has helped with the camp in any way. Profit from the camp will be used to maintain the camp, build and maintain the walkway extension and for other environmental projects in the area.

Lake Okareka outlet structure: BOPRC are continuing to evaluate options to upgrade this. They have found that the outlet pipeline has severely deteriorated and needs improvement. They are looking at replacing the pipework soon and also looking at putting in a weir and possibly electronic control of the outlet.

Acacia Road lakefront reserve: on going project for LOCA following a comprehensive survey of local residents, to improve the area with safety of all users in mind, especially around the jetty and ramp area.

Cell Phone Tower: LOCA were advised during 2013 that a consortium of telco's were looking at placing a cell phone tower on Playne's farm. LOCA is supportive of this initiative, not just for the convenience of those people who live, work or visit here but also with safety and saving lives, which was of huge importance.

Growth of tourism and events, especially at Blue Lake (Tikitapu): traffic management issues are of concern to the new owners, Brian and Cheryl Murray of Blue Lake Top Ten camp. He is considering changing the entrance to the camp, but would like reduced speed limit in the area near the camp, as well.

Water quality Lake Okareka: this does not seem to have improved markedly in spite of sewerage system going in. Why is this?

Hornwort: how effective has the NIWA/BOPRC aquatic weed control programme been so far?

Wallabies and possums in Lake Okataina Scenic Reserve: concern about over browsing and impact of this on lake water quality into Lake Okataina especially with high rainfall events. Like to see some "action," not more studies.

Property Valuations and impact on Rates: Rotorua district will be getting a new valuation later this year. Not

many properties have sold at Okareka, Tarawera has had 19 sales and a drop of 20% in prices paid compared to current valuations. It will be interesting to see what effect this has on valuations here and therefore on RDC rates.

Newsletter: Thank you to Maria Haines for her great efforts as Editor. Hope to go to full colour this year.

Volunteers at Lake Okareka: Geoff thanked them all for their efforts on behalf of the Community.

Mr. Palmer moved the adoption of the Chairman's Report/Carol Christian-Price – carried.

Discussion: the Chairman's Report caused extensive and wide ranging comment.

Acacia Road lakefront area: Bryan Walford asked is LOCA funding the work at Acacia Road lakefront area? Mr Palmer replied that as yet we do not know. Some representatives from LOCA met with representatives from RDC Parks & Reserves and then with representatives from Te Arawa, DOC and BOPRC towards the end of 2013. RDC have provided materials for the change in the fence (to take in shade tree in dog exercise area to the left of reserve, when looking at water). LOCA to provide the labour.

RDC want LOCA to fund **pontoon**, estimated costing \$5000 and build to their plan. Any reed removal and installation of pontoon must have resource consent and seek approval from LINZ and Te Arawa Lakes Trust, RDC and BOPRC. Pressure comes on to Lake Okareka, especially when events are held at Tikitapu (Blue Lake). For example the rowing event which had a 3 day closure of Blue Lake in January (summer school holidays), and only allows a very small area for swimming near the Blue Lake Top Ten camp. Tidying up the lake front area at Acacia Road could not be done with timber (not a natural material) according to the Te Arawa representatives. However, use of natural materials was acceptable i.e. rocks. Removal of raupo was also going to be difficult. The Te Arawa representatives and DOC staff were sympathetic but will require resource consent approval. DOC has a court case pending in the Lake Okareka catchment. Geoff said it will be up to the new LOCA Committee to try to progress these matters. If nothing is done about reed removal the area for boats and swimming will become less and less....

Walking Track Project: What is happening with this? An engineering report for the bridges and boardwalks involved, has been acquired by LOCA and DOC, each paying \$1000 towards the cost of the report. The Assessment of Environmental Effects has been completed and signed off by Dept of Conservation. The Bay of Plenty Regional Council requirement of a Wetland Management Plan to cover the Millar Road wetland area has been completed and signed off by both landowners – DOC and RDC. The proposal is now to go before Rotorua District Council Planning Department, and the Lakes A Planning Rules come into play now. The project is seen as part of the Dept of Conservation plan to have a series of walking tracks to make up the Rotorua Lakes Walking Tracks circuit.

The speed limit past the Blue Lake Top Ten camp and beach area came from **John Dyer from Tarawera** and the Rotorua Lakes Community Board. Surely if schools can have lowered speed limits then this area also requires lower speed limit and he supports any change.

Cr. David Donaldson: he believes there are a number of areas requiring speed limit investigation – in particular in the area of the Tarawera Road roundabout and road, the new Redwoods Shopping centre, Long Mile Drive, as well as the Blue Lake area on Tarawera Road. He did not accept the RDC explanation that because roads were funded by NZTA they had to remain at open speed limit. Traffic and users safety, including pedestrians, should be high priority and he would be pushing for a review to be implemented.

John Green from Lakes Water Quality Society commented on Lake Okareka water quality. He said that the TLI targets for Nitrogen had been met through the installation of the sewerage scheme. He thought that the other nutrient of concern Phosphorus was probably still having an impact, possibly coming from heavy rain events (no bunds on Playne's farm) or even from high lake levels with a lot of erosion.

Cr Neil Oppatt (BOPRC) commented that the Lake Okareka Catchment Action Plan (LOCMAP) set targets for N and P. There is yet more science to be done. He did not believe that the problem is pollution! It is more to do with there being more nutrients in the system than there should be. There is still \$500,000 in the BOPRC budget for further land use change or other actions to help stop nutrients getting into the lake. BOPRC do intend to review the nutrient targets, maybe they were set too low. While the lake water in Lake Okareka is not getting better, it is also not getting any worse! **Geoff Palmer** asked was it fair to property owners in the settlement who had paid over \$12,000 each for a sewerage scheme that the rural properties appeared to be doing very little to help with nutrient management.

Cr. Neil Oppatt responded by saying that there will always be inequities, no matter what system is being used to achieve targets. Science is being done and BOPRC will continue to implement changes as required.

Jack Smith, Lake Okareka resident who was on original LOCMAP Committee: believes that the targets set were what was seen at the time as being achievable, at that time. NIWA did not know as much then as they do now. He believes it will take time for the nutrients (N & P) in the ground to leach out. He is not too upset that the lake water quality at Okareka has not improved very much yet.

Chris Russell, farm owner on Millar Road: responded by saying that he has retired several hectares from animal grazing on his property, he has 2 retention bunds and he does not use P or N fertilisers on his farm. Maybe

not all farms in the catchment have done things to improve nutrient leakage but many in the area have done quite a lot.

Mayor Steve Chadwick: she commented about how Federated Farmers and the Regional Council were working together to find solutions for Lake Rotorua. She said farmers were anxious and environmentally aware of the problems. Everyone was trying to work together to find solutions. She said it was astonishing to see the improvement in water quality that happened last year in Lake Rotorua.

James Blakely, Lake Okareka resident who was also on the original LOCMAP Committee: warned to be careful and to look at Lake Rotokakahi (Green Lake) what is the cause of it's poor lake water quality which seems to be in further decline. He believes that science has more answers to find yet.

John Green, LWQS commented: he understands that Lake Rotokakahi problems with increasing nutrient have arisen since the forestry cutting around the lake. He said it was why RDC need to be very careful about on going tree harvesting around Lake Tikitapu. Soil erosion brings P into the lake waters. Same story with Lake Okataina only there caused by huge loading of pests (wallaby, possum, rats, pigs and deer) over grazing the understory. With heavy rainfall in the area, understory erosion is happening which washes more nutrients in to lake water column.

Ray Cook asked about the impact of the people staying at the DOC camp off Millar Road, 20,000 people per year using "long drop" toilets and bathing in the lake every day. He asked if a survey was being done on their effect on the lake water.

Sandra Goodwin responded by saying that all toilet waste at the camp from both campers and day visitors was being collected in sealed concrete vaults, and this has been the case since the camp opened. The toilets were not long drops in the conventional sense. The 3 toilets have so far been pumped out 3 times since the 1st December 2013 at a cost of \$920 each time. DOC replaced one of the original toilets during winter/spring of 2013 as the vault was too small, and replaced this with 2 toilets of over twice the original toilet vault's capacity. Campers are encouraged to wash dishes, etc in the sinks provided at the back of the toilets.

Helen Russell, one of the DOC camp wardens: said that she believed that the LOCA camp wardens were doing a good job and asking any campers they observed, to stop using soap or shampoo in the lake. DOC has signage in the cooking shelter to that effect as well. Most campers just seem to have a swim, as do numerous day picnickers at the ski beach and along at the jumping off rock.

Liz Harding: asked about an up to date picture about animal pests in the wider Okataina, Okareka and Tarawera areas.

Geoff Palmer said this had been done in the last 3 – 4 months (by DOC? BOPRC?) and the animal pest numbers had definitely increased.

Helen Russell: asked about the "No P" project that BOPRC and RDC staff ran a year or so ago. Feedback to BOPRC and RDC said that a lot of phosphates are being used - laundry, shower, dishwashing.

Geoff Palmer said that there is no incentive at Okareka to save water, while we are being charged for a minimum water use that most of us would never come close to using! We are not being charged for what we actually use.

Denise Aitken asked if the profit from the DOC camp could be used for 1080 drops?

Cr Neil Oppatt BOPRC: said that it all comes back to TLI targets and science. BOPRC are not sure why Lake Okataina water quality is in decline so they are paying a student to do 3 years study – with NIWA and University of Waikato.

Denise Aitken responded by saying surely this is an obvious problem as the understory is so poor and there seems to be very few birds in the forest.

Cr Oppatt responded by saying that BOPRC cannot do everything and just throw money at problems hoping they will work – need the science first.

Hon. Todd McClay MP for Rotorua: commented that the Government are talking with DOC. He would be speaking with DOC locally about the wallaby numbers and how to get rid of them. He believed that there had been a successful but labour intensive attack on wallabies on Mt. Ngongotaha. He was meeting with local DOC people to discuss a long list of issues in 2 weeks and would report back. [Secretary's note about wallaby control on Mt. Ngongotaha: believed to be the most expensive wallaby hunt in NZ ever, with very few wallabies caught at a high \$\$ cost]

Doug Leeder, new Chairman of BOPRC: spoke about implementing BOPRC policy based on science and science based modelling. Have to be careful when adopting policy. Use of alum in Rotorua lakes – it might work in short term but is it's use sustainable? What do you do with the alum once it has absorbed the phosphorus? [Did not seem to realise that phoslock had been used at Lake Okareka]

As far as animal pests are concerned he believed that some one needs to make some decisions about controlling the animal pests. Aquatic pests, hornwort is being attacked by BOPRC staff– more spraying due at Lake Okareka in March 2014. Lake Okareka outlet to be dealt with 450mm pipe to be increased to new 600mm pipe and installation of passive weir to control water levels, \$365,000 in BOPRC budget for this work.

Tarawera Trail opened recently: concern expressed about lack of toilets along trail, proliferation of weeds

including gorse, and litter, concern about numbers using the trail – need more toilets, rubbish facilities.

Mayor Chadwick spoke about issues that came from the Tarawera Ratepayers AGM: need to get a handle on what are our three priority issues e.g. lakeside public toilets to be upgraded, launching ramps, etc. Rotorua Lakes Community Board will be collating these from lakeside community AGM's and presenting these to RDC. Cr Rob Kent and Cr Peter Bentley will be RDC representatives on RLComm Brd.

Bill Keighley asked if the impact of **geothermal waters** on lake waters had been assessed?

Cr Neil Oppatt responded by saying a huge amount of investigations have been done.

John Green LWQS: spoke about the impact of possibly 8 lakes on Lake Tarawera. He said RDC and BOPRC have done some good work so far, but they need to keep the momentum going.

Neil Kennedy asked about **rubbish collection and the possibility of recycling** at RDC reserves, especially Boyes beach. People need to take more responsibility.

Financial Report: (see pages 20, 21, 22)

The reason for subscriptions being down and donations up was because of how the subs were now divided into \$5 Subs and \$15 for donation. It was also noted that the DOC camp for which LOCA now holds a 6 year management contract is proving to be a great earner. The profit from the camp is earmarked for conservation activities within the catchment, in particular related to the proposed walking track around the lake.

Local Okareka Phone Books: these have been very well received by the community. This is a very large job keeping phone numbers and addresses up to date. Thanks to Carol Christian-Price and Krystyna Palmer for all of their hard work with this project.

Subscriptions for 2014/2015 Financial Year: It was moved that these remain at \$5 family subscription and \$15 donation – G. Palmer/M. Goodwin – carried.

Election of Committee and Officers:

Blair Gilbert and Mike Bannister had tendered their resignations from the LOCA Committee. The LOCA constitution states that there will be up to 10 Committee members and 3 Executive Committee members (Chairman, Secretary and Treasurer). LOCA can co-opt additional members to the Committee if, or as required.

It was moved that the existing LOCA Committee and Executive members - Geoff Palmer, Chairman; Sandra Goodwin, Secretary; Bryan Walford, Treasurer; and Committee members Lyall Beuth, Carol Christian-Price, Matt Harvey, Katy Hodgson, Cheryl Lyons, Ian Potter, Chris Russell, Marcel van Leeuwen, and Mike Vincent be re-elected en block – moved Neil Oppatt/Neil Poskitt – carried.

Auditor: Moved that **Ken Stokes** be re-appointed as the LOCA Auditor – C. Christian -Price/K. Hodgson – carried.

Geoff Palmer then called on Invited Guests to make short comments:

Hon. Todd McClay, MP: He reiterated the water quality issues were not a matter of pollution, but instead too much nutrients from many sources being in the system. But he said it was a good thing that there was debate and discussion about the issues. We are all part of the solution, that we should all stick together and that every farm has done something to help solve the issues. He said he was proud of what has happened with Lake Rototoi, as it was now one of the cleanest lakes in NZ. NZ Herald will be publishing an article soon on what has happened here. He hopes that this will help bring more tourists to the area. He also spoke about broadband coverage here. Meeting was able to tell him that broadband speeds were much improved now.

RDC Mayor Steve Chadwick spoke about strategic planning for the council, with \$3m shortfall in the current annual budget, cuts needing to be made. Will be a cautious approach but everything is under scrutiny. Wants to get community involved.

John Green LWQS spoke about the coming AGM and Alison Lowe from RDC coming to speak about sewerage treatment for Rotorua.

Ray Cook from the Rotorua Airport company spoke about new CEO and the hope for a regional focus for the airport.

General Business:

Neighbourhood Support and Civil Defence: question came from Dianne Walford (via Bryan Walford). What is happening here? We need someone to bring this together for Okareka, liaise with Rural Fire Force, Pre School (in the Hall), needs a community discussion – work in progress.

The 2014 AGM of Lake Okareka Community Assn closed at 9.35 pm.

Lake Okareka Community Association (Inc)**Statement of Financial Performance****For the 12 Months ended 30th September 2013**

<u>Income</u>	2013 12 months	2012 12 months
Advertising Income	\$ 4,165.78	\$ 2,453.91
Donations	\$ 2,990.25	\$ 200.00
Interest Received	\$ 383.33	\$ 357.60
Subscriptions	\$ 804.75	\$ 3,358.12
Postcard & T Shirt Sales	\$ 82.61	\$ 546.96
Grant For Beautifying - RDC	\$ -	\$ 4,000.00
DOC Campsite Income	\$ 40,747.53	\$ 5,280.00
Total Income	\$ 49,174.25	\$ 16,196.59
<u>Expenditure</u>		
Advertising	\$ 120.36	\$ 86.15
Bank Charges	\$ 6.50	\$ 1.50
Carol Service	\$ 982.87	\$ 628.18
Donations	\$ 60.00	\$ 60.00
DOC Campsite Expenses	\$ 19,775.01	\$ 3,417.58
Fireworks Display	\$ -	\$ 500.00
Notice Board/Hall Equipment	\$ 1,373.56	\$ 1,377.55
Meeting Expenses	\$ 162.47	
Newsletter Printing	\$ 2,511.04	\$ 2,619.75
Phone Books	\$ 444.00	\$ -
Postage	\$ 378.28	\$ 420.75
Pump Station Painting	\$ -	\$ 3,938.45
Stationery	\$ 596.35	\$ 263.15
Sundry Expenses	\$ 451.37	\$ 206.79
T Shirts and Postcards	\$ -	\$ 234.00
Walkway costs	\$ 20.00	\$ 964.88
Website Costs	\$ 35.91	\$ 329.00
Total Expenditure	\$ 26,920.70	\$ 15,047.73
Excess/(Deficit) of income over Expenditure	\$ 22,253.55	\$ 1,148.86

The accompanying notes are to be read in conjunction with this statement

Lake Okareka Community Association (Inc)**Statement of Financial Position****As at the 30th September 2013**

<u>Current Assets</u>	2013	2012
Westpactrust Cheque Account	\$ 1,615.09	\$ 4,059.78
Kiwibank Business online Call Account	\$ 10,710.95	\$ 10,337.62
Kiwibank DOC account	\$ 1,554.17	\$ -
Kiwibank Term Deposit	\$ 20,000.00	\$ -
Accounts Receivable	\$ 1,731.00	\$ -
GST Refund due	\$ 1,219.20	\$ -
Total Assets	\$ 36,830.41	\$ 14,397.40
<u>Current Liabilities</u>		
Creditors	\$ 949.30	\$ 769.84
Total Liabilities	\$ 949.30	\$ 769.84
Net Assets	\$ 35,881.11	\$ 13,627.56
<u>Represented by Members Funds</u>		
Accumulated Funds brought forward	\$ 13,827.56	\$ 12,478.70
Excess/(Deficit) Income over Expenditure	\$ 22,253.55	\$ 1,148.86
	\$ 35,881.11	\$ 13,627.56

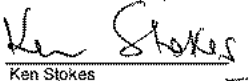
The accompanying notes are to be read in conjunction with this statement

Auditors Report

I report that I have examined the records of the Lake Okareka Community Association Inc. for the twelve months ended 30th September 2013. In common with similar organisations, control over income prior to its being recorded is limited. There were no practical audit procedures to determine the effect of this limitation.

The Committee meetings and minutes are relied upon to authorise all expenditure.

In my opinion, subject to the above, the Statement of Financial Performance and the Statement of Financial Position fairly present the financial results of activities for the year and the financial position as at 30th September 2013


Ken Stokes

Lake Okareka Community Association (Inc)
Notes to Accounts
For the twelve Months ended on 30th September 2013

Income

Subscriptions : These were received from 185 members out of approximately 265 eligible residential properties.

Contingent Liabilities

There are no known contingent Liabilities as at Balance date.

Creditors

Newsletter Printing	\$ 644.00
Miscellaneous	<u>\$ 305.30</u>
	<u>\$ 949.30</u>

Debtors

Advertising	\$ 1,731.00
	<u>\$ 1,731.00</u>

 <p style="font-size: 2em; font-weight: bold; letter-spacing: 0.5em;">CAPERS</p> <p style="font-size: 0.8em; letter-spacing: 0.5em;">E P I C U R E A N</p>	<p style="font-size: 1.2em; font-weight: bold;">Breakfast Lunch Dinner</p> <p style="font-size: 1.2em; font-weight: bold;">Ph 348 8818 www.Capers.co.nz</p>
---	---



LANDCARE OKAREKA REPORT—MARCH 2014

I hope everyone had a safe and enjoyable Christmas and New Year break. Working bees have begun again for Landcare Okareka volunteers. Some of the volunteers were busy over the summer break trimming off the large flax heads that became too heavy and started to droop over the walkway path.

Our first Working Bee in late February saw a great team of workers tidy up the Department of Conservation walking path at the end of Acacia Road out to Taumaihi, the reserve right at the end of Acacia Road. We hope that the regulars who walk out there appreciate our efforts. As well as undertaking weeding and a tidy up of the area, three wasp nests were dealt to at the same time (more about wasp nests elsewhere in this Newsletter).

This summer, the Landcare Okareka volunteers will focus their efforts on the Taumaihi reserve area. There are a large number of weeds growing in the reserve, which we want to tidy up, with Department of Conservation's blessing. We would then like to plant up the edges of the reserve once all of the weeds are under control, with native plants suitable to the area. A big thank you is owing to the Lebuia Lake House manager for continuing to get his gardeners to mow the grassed area of the reserve, so the public can continue to enjoy walking here.

The Lake Okareka Walkway has had some of the delivered gravel spread on it and the track surface is now very good. Hopefully, Castlecorp staff will continue to mow the edges out to the toilets. Volunteers from Landcare Okareka have kept edges trimmed from the toilets out to the end – thank you to them – and thanks also to the LO volunteer who continues to regularly mow the top part of the walkway around the seat and tables and along the carpark to Playne's farm gate and keeps the place looking neat and tidy. The mowing by Castlecorp of local reserves and road sides has become so erratic, with some places looking more like hay or silage crops, before they are mowed.

Recently Landcare Okareka volunteers have had some of the BOPRC loan Timm's traps working along the walkway. I think the number of possums caught in one recent 2 week stint will be the largest caught to date in one stint of trapping! Great work LO volunteers, especially Elli Walter, also known as "the possum exterminator"!

Update on the bat project – long tail bats have definitely been found on the edge of the Okareka settlement and in the north eastern area of the Lake Okareka catchment – off Millar Road. So thank you to those land owners who have so willingly allowed access to Mike Goodwin to put out bat boxes. The bat boxes have now been returned to DOC, as another group wished to use them. We would like to thank DOC Rotorua Lakes area and especially Rhys Burns, for their help with this project. Thanks also to Stephanie Bathgate from Bay of Plenty Regional Council for her help with this project, as well.

We hope to be able to continue searching the balance of the Lake Okareka catchment next summer looking for more bat locations.

There will be many more Working Bees in 2014, around Lake Okareka, usually on the fourth Saturday of each month....so if you would like to help, watch out for the sign boards and come along. You will be most welcome.

Sandra Goodwin 362 8865

Landcare Okareka - Winner of Bay of Plenty Region Weedbusters Award 2012-2013





Rotorua's Specialist Mercury Dealer

Sales & Service

All makes & models of
outboard motors
MerCruiser stern drives

Marine Accessories

Including Life Jackets &
Ski Vests
Skis
Marine Electronics, etc

We are looking to buy or sell on behalf - good second hand boats.

Guaranteed workmanship from fully qualified marine technicians



31 Fairy Springs Road | PO Box 1337 Rotorua

P : 07 348 4997 or 0800 95 95 90 | F : 07 346 0037 | E : thompsonmarine@seaboss.co.nz



Corner Old Taupo & Sunset Roads | PO Box 1337 Rotorua

P : 07 348 4441 | F : 07 349 2944

- Chainsaws
- Lawnmowers
- Reel Mowers
- Ride-On Mowers
- Line Trimmers
- Scrub Cutters
- Forestry Pruning Equipment
- Rotary Hoes
- Generators
- Blower / Vacs
- Water Blasters & Pumps
- Splitters & Chippers

Sales & Service of Outdoor Power Equipment
Rotorua Agents for Husqvarna Outdoor Power Equipment, including
Chainsaws, Trimmers, Ride On Mowers, and more
Also stock and service Lawnmaster, Masport and Honda Power
products, Briggs & Stratton and Robin Engines



We service, sharpen and repair all makes and models

Thompson Trimming
Phone 348 4441

Upholstery | Repairs | Furniture Recovering | Boat Canopies
Squabs | Hull Linings | Forestry Clothing, chaps, pouches, etc.

LAKE OKAREKA TENNIS CLUB

Subscriptions 2013/2014 year:

The current subs remain as \$100 for the whole family until October this year. The committee believes this is exceptional value for a family membership. Payment is requested into the account of the Club as Westpac Bank account number 03 – 1552 – 0130369 – 00. **It is essential you e-mail confirmation of the deposit** to avoid any unidentified deposits. It is also necessary for you to include in your e-mail current contact details including mail, telephone and e-mail details. A key will be sent to you.

Autumn coaching for children:

The spring coaching of eight sessions for children culminates 4 April. With three sessions completed there is still time to enrol. It has been very successful with over 60 children participating.

New members are very welcome.

Contacts for the Tennis club are:

John 362 8282
Hongli 362 8106
Gert 362 8835
or johnbattersby@xtra.co.nz





LAKE TARAWERA PLAYCENTRE

Lake Tarawera playcentre is situated at 10 Alexander Road, and during term time we have sessions on Monday and Thursday 9.30 am – 12.00 pm. If you want to find out more about our parent run early childhood education service – for children from birth to age six- please read on.

Last term, we graduated from playcentre two of our young children, Bella and Hugo, we wish you both all the best at school. It was sad saying good bye to Cate who has been a member of playcentre for about 12 years, and brought her four children along. We also said good bye to Kama and Jack who joined last term but had to leave for personal reasons, and to Vana and Holly. It was fun having you around and we will miss you all.

We would like welcome new families, Rachel and Riley from Tarawera, Pete and Yasmin from Lynmore and Melanie and Lucy-bell from Lake Tarawera. We look forward to spending time with you and having fun at playcentre.

This term our children have been busy as usual outside in the playground, in the sandpit and enjoying a bit of messy play, also being creative with collage and making dolls with sticks fabric scraps.

We all look forward to another year full of adventures at playcentre. Please feel very welcome to come and visit, we would love to have you and share in the learning of our children and our wonderful centre.

Feel free to contact us by email tarawera.playcentre@gmail.com or phone us at 3628 748 or at 3628 055 during session times.



Joseph, Francisca & Eva



Busy at the collage table—Francisca & Luna



Working cooperatively to build a house—Joseph & Francisca

THE LEWIS PLUMBING COMPANY

*Registered Craftsman
Plumbers & Gasfitters*

Ph: (07) 343 9060

57 Tallyho St, Rotorua

jon@lewisplumbing.co.nz

www.lewisplumbing.co.nz

Chris Smith
glass
professionals



CALL 07 348 5038
24 Hour Service

91 Riri Street, Rotorua
info@chrissmithglass.co.nz
www.chrissmithglass.co.nz

24 HOUR
GLASS SERVICE
CALL OUR TEAM
OF PROFESSIONALS

NEW SERVICE
Auto Glass
*All makes.
All models.*

- **Splash Backs**
- **Mirrors**
- **Frameless Showers**
- **Window Tinting**
- **Glass Balustrades**
- **Window Maintenance**
- **Retro Fit *Double Glazing***
(to Existing Aluminium & Wooden Joinery)



Have you ever thought of travelling to Vietnam or Cambodia? We have some fantastic earlybird specials with Travelmarvel. Just so long as you book before 31 March.

If you book any Travelmarvel Vietnam cruise holiday of 12 days or longer in any suite category departing June 2014 to

April 2015 you will **FLY FREE**. **That's a saving of up to \$5850** per couple.

So if you would like a copy of the brochure with these specials and more just give me a call or email me Donna Soler at House of Travel 07 348 4152 or donnas@hotmail.co.nz - I would be happy to personally deliver a brochure to you.

HOUSE OF TRAVEL

HOW **KiwiS** See
the **WORLD**

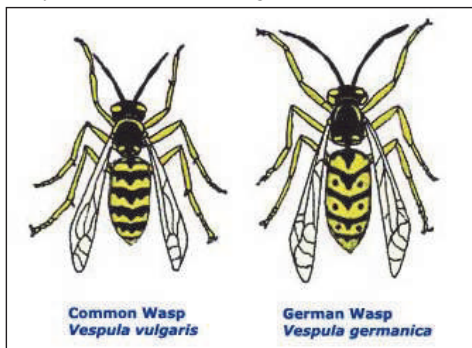
Rotorua | Cnr Fenton & Eruera Sts | 07 348 4152 | donnas@hotmail.co.nz

REPORT ABOUT WASPS

– with thanks to Bay of Plenty Regional Council website, Wasps.

This summer appears to have been a particularly bad season for wasps, with many people living at Lake Okareka complaining about wasps in their gardens. Mostly the problems this summer have been caused by either German Wasps or Common Wasps.

The German Wasp has probably been in New Zealand since the late 1800's, but they were not seen in large numbers until around the 1940's. It is slightly larger than



a honey bee with a black head and thorax. The abdomen has yellow and black stripes, with black spots separate from the central black stripes.

The Common Wasp arrived more recently than the German wasp but it is already widespread. This wasp is very similar to the German wasp, but it can be identified by not having separate black dots on its abdomen. These dots appear to be fused to the black rings on the abdomen.

While there are 4 species of wasp in our region (Asian paper wasps and Australian paper wasps being the other two species) German wasps and common wasps present the greatest danger to public health, they attack bee hives and compete with and prey on native fauna.

German and Common wasps normally nest underground, though German wasps in particular will sometime use hollow trees and walls and roofs of buildings. Some local Lake Okareka residents will confirm this fact! Their nests can be really hard to find, especially in bush or scrub country.

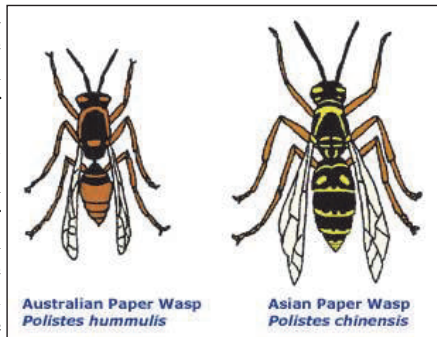
To locate their nests, look for wasps' flight path at dawn or dusk on a warm sunny day when large numbers of wasps will be leaving or returning to the nest. You can track wasps by first using a plate of cat food to attract the wasps. As they land sprinkle them with flour to make them more visible. Follow the wasps as far as you can, then repeat the process until you find the nest. Be very careful as you approach the location of the nest.

If you are still unable to find the nests, which is quite common in bush clad areas, Mike Goodwin has found that wasp traps made from recycled plastic drink bottles (2L size seems to work best) work quite well. Just cut off the top tapered neck piece and invert into the rest of bottle, like a funnel. He found then stapling the two sec-

tions together and putting about 25 mm of juice along with some cat food - or some other sweet substance (you could use jam and water or even beer) into the bottle and attaching this to a tree or a post or fence in your garden will work well to attract and drown wasps. You will probably need more than one wasp trap to be really effective.

There was a very big wasp problem this summer at the DOC camp and beach area. The LOCA camp wardens used these wasp traps (we had 14 of them working at the camp at one stage, and were replacing some of the traps every second day as they were full of wasps!) as well as locating and treating nests and all of this seemed to make a big difference to those who visited.

Asian paper wasps were first discovered in North Auckland in 1979 and have quickly spread throughout the northern North Island. They are slightly smaller than the German and Common wasps. The Asian paper wasp is also yellow and black striped. Paper wasps fly with their long legs dangling beneath their bodies and this easily identifies them from German or Common wasps. The Australian paper wasps have been in New Zealand since the 1880's. They are smaller than the Asian paper wasp and have a reddish-brown colouration.



The paper wasp species build elaborate “paper mache” nests. These are generally bell shaped with hexagonal cells. Nests can be suspended from branches of shrubs or under the eaves of buildings. They hang more or less vertically, so that rain or dripping water cannot enter open cells. These can usually be easily controlled by using household flyspray. The nest can be removed by placing a plastic or paper bag over the nest and clipping it off into the bag. Seal the bag and dispose of it in the rubbish.

At Lake Okareka we are very fortunate to have the offer of free wasp eradication services from Landcare Okareka volunteer, Mike Goodwin. This summer he has dealt to over 100 wasp nests using insecticide provided by Landcare Okareka and LOCA (from Camp ground profits). This is double the number of a usual summer for Mike who has been controlling wasp nests at Lake Okareka for about the last 6 years or so. Mike uses Permethrin Insect Dust which is a synthetic pyrethroid permethrin, and is a much cheaper and more effective insecticide to use on wasps. This insecticide is also used by Dept of Conservation, Rotorua District Council and is recommended by Bay of Plenty Regional Council.

Residents and property owners at Lake Okareka, if you are having any wasp problems, please contact Mike Goodwin 362 8865.

Kirsty Gerlach Audiologist MNZAS



- Personal caring advice.
- Latest technology.
- 20 years experience.

kirstygerlach

HEARING

caring for your hearing

call Kirsty today on 07 343 6669

1071 Hinemoa Street, Rotorua

TAX MADE SIMPLE

**FREE NO OBLIGATION CONSULTATION TO SEE HOW
WE CAN HELP YOUR BUSINESS GROW.**

**CONTINUED SUPPORT AND FREE ONE HOUR CONSULTATIONS EVERY
MONTH ONCE YOU HAVE JOINED.**

**WE OFFER SUPPORT, ADVICE AND ASSISTANCE RELEVANT TO YOUR
ACCOUNTING + TAXATION NEEDS.**

- SMALL TO MEDIUM BUSINESSES • SELF EMPLOYED
- INVESTMENT PROPERTIES

www.tacts.co.nz

ph:073628902 | e:chris@tacts.co.nz

fax:073628903 | m:0272102035

FRIENDLY • FOCUSED • FLEXIBLE

tacts limited 
supporting your business to grow

Ray White®

Norman Donald AREINZ

Licensee Salesperson (REAA 2008)
Lakes, Rural & Lifestyle

PH 07 362 8056 T 07 348 8333 M 0274 950 189

F 07 348 8332 E norman.donald@raywhite.com

1274 Eruera Street, PO Box 693,

Rotorua 3040, New Zealand

AMTOS Realty Services Ltd Licensed (REAA 2008)

rwrotorua.co.nz



bookabach™

Recognise this logo?

It is the most up to date and forward
thinking website for

HOLIDAY RENTALS

Norman Donald

with his

2LAKES HOLIDAY RENTALS

is offering you the opportunity to have
him list and manage your property on

bookabach™

(with no Bookabach annual sub fee!)

To have Norman start your property
earning you an excellent extra income

Call him now:

07 3628056, 0274 950189

norman@2lakes.co.nz

LAKE OKAREKA PRESCHOOL—MARCH 2014

Welcome to our new children and their families who have joined us this term. Freya McNair, Nico Alexander, Jack Parsons, Nicole Wallace, Amelia Webb Georgia Neill.

Some of our children will be graduating at the end of the term. We have a farewell end mat time for each child where we celebrate their learning and readiness for their school years and beyond. The end of this term we farewell Hazel Herries, Joshua Bowyer, Jesse Russ and Daniel Cheesman. We also farewell Frida Pilditch and family moving to new pastures. We wish you safe travels. Special thanks to these families who have supported Preschool over many years.

Learning at Preschool this month

The children are settling back to Preschool and enjoying many new experiences and revisiting some favourites. Activities such as art collage, carpentry, caring for the vegetable and flower gardens, family play, cooking pizza and much more.

Can you help?

We would like recycled pieces for our collage table such as old woollen blankets people would like to get rid of? Also does anyone crotchet or knit and be happy to donate a few squares of either? We have some planned learning experiences using these materials for sewing. We would like to know if anyone will be travelling to Whakatane in the next few weeks as we have a water tank to pick up for our Preschool. You will need a trailer. If you may be able to help see the teachers.

Cocktail Evening *(Date to be advised)*

Mark your diaries now for this year's Lake Okareka Preschool Fundraiser Saturday 22nd March at Preschool. Tickets will soon be available for \$50 per person. See Nic Bennett or Karina Bohle.

Recycling cardboard and paper

We really appreciate the support from the community to recycle. This not only reduces our carbon footprint, it also helps funds for Preschool.

Special thanks to: Lake Okareka Fire Service for assisting Santa to Preschool for Santa's visit and the Nativity community evening. Thanks also to Mike and Sandra Goodwin. We appreciate once again their contributions to our Christmas celebrations.

Please let any families with Preschool children know about Lake Okareka Preschool right here in your community.

Teaching Team

Lake Okareka Preschool





THINKING OF SELLING?

If you are considering selling, call me and I will discuss with you the best method of marketing your property to take advantage of current market conditions.

I am committed to maximising the value of my clients' real estate assets.

For totally professional service, call me any time.



Jenny Donne

Mobile 027 385 0566 or Business 07 349 5356

jenny.donne@bayleys.co.nz

SUCCESS REALTY LIMITED, BAYLEYS, LICENSED UNDER THE REA ACT 2008

Specialists in Lakes A Zone planning and surveying
Your local surveyors, planners and cartographers



1180 Amohia Street
PO Box 396
Rotorua
07 3498470
consult@canmaphawley.co.nz
www.canmaphawley.co.nz



Phone Jason Ward, Mark Dyer or Nick Davies
for local, professional and practical advice.

EVENT INFORMATION MARCH 2014 to JUNE 2014

Events & Venues Rotorua Community and Major Events Team manage all reserve booking for events that happen in Rotorua. They also meet regularly with the BOP Regional Council to discuss and coordinate events happening close to and on all of the lakes in the region. Both organisations appreciate the impact events can have on the location they are held, both positive and negative. If you have feedback that you would like to offer or you wish to discuss events happening in your area, please contact the events team at Events & Venues by calling the Events Manager on 07 351 8654 or by emailing major.events@rdc.govt.nz

Start Date	End Date	Event	Where
22/03/14	28/03/14	Secondary Schools Nationals Waka Ama Regatta	Blue Lake Reserve
12/04/14	12/04/14	Paymark XTERRA Festival	Blue Lake Reserve
01/06/14	01/06/14	3D Off Road Multisport Festival	Blue Lake Reserve



INVESTING IN PROPERTY?

We offer a full range of
accounting services
for all sized businesses

Be sure to call us to discuss

- Ownership structures
- Tax deductibility of expenses
- Mortgage Security & Tax implications

MACMILLAN ACCOUNTANTS
31 White Street, Rotorua Phone 350 1018

CLASSIFIED ADVERTISEMENTS

Wanted to buy—child's Wendy House—phone Siobhan 3628 733

Wanted to buy - does anyone have an **old small wooden boat** sitting around that would be suitable to fill with sand and use as a sand pit?! Can help remove—**phone Shelley 3628 312.**

Wanted—if you have any unwanted **Agapantha plants** on your property you don't want can I have them please? Phone **Carol on 3628 702** or drop them inside my gate at 33 Loop Rd.

My name is Olivia Burman and I live out at Lake Okareka. I am looking for **casual babysitting or weekend day nannying/ babysitting**. I currently work part time at Red Stag Timber Ltd. Call me on 3628 701 or 021 0644410. Reference checks available too.

Are Wasp Nests a Problem for You?

If you can locate the nest, we can treat it - at NO cost. This is a community service offered by Land-care Okareka, with chemicals funded from donations received by the group—**phone Mike Goodwin 3628 865**

FREE—Marque available for community events. **Phone Cathy Lines**, Licensed Salesperson, Okareka & Tarawera Specialist. First National Real Estate. Mob: 021 033 7707 or AH: 07 3628 112

Sharpen your chainsaw on my electric grinding gadget for free or I will do it for \$5—**phone Bryan on 3628 224**

Pet Feeding Services - Pet feeding services over the holiday season and throughout the year, \$7 per visit includes indoor plants watered and mail collected. Limited boarding pens may be available—**phone Carol on 3628 702**

Heather Horton (Artist) - Watercolours, Oils, Pastels and lead-lighting work can be seen in the studio. Works are for sale, or can be ordered—**phone 3628 165**

Trees felled for free - Conditions apply—**phone Chris 3628 679 or Peter 3628 108**

Mobile Library visits every 2nd Monday at the bus stop 19 Loop Road from 3.25pm to 4.10pm.

Trays made of recycled rimu - three sizes: 270x375 \$30, 310x450 \$40, 360x510 \$50 - phone **Bryan on 3628 224.**

Dry Blue Gum—only \$80 per m3 delivered to Lake Okareka/Lake Tarawera. Minimum of 2m3 for free delivery. **Phone Ngaire 345 7488 or 027 460 7056.**

BK Transfers and Shuttles—24 hours shuttle service and personalized service to Auckland, Hamilton, Tauranga, Taupo and Rotorua cities/airports. **Phone Graeme 3628 867 or 027 3628 867.**

House Cleaner Available—hourly rate. Ovens, ironing, windows. Anything you need cleaned. **Call Jenny 3628 063.**

PHONE BOOK ADDITIONS AND CORRECTIONS

Page 1	Add	Agnew, Jamie & Hiha-Agnew, Rose	38 Loop Rd	3628 041
Page 2	Add	Findlater, Jasmine	37 Summit Rd	3628 448
Page 4	Delete	Lowe, Annie	15 Millar Rd	3628 522
Page 6	Delete	Van der Gurlik	38 Loop Rd	3628 581
	Delete	Vastenate, D & J	38 Loop Rd	

Massage Relieves Your Aching Back And Neck



Stop The Pain

Look after yourself with this great deal for locals. Ideal for easing tension from over work. Book a weekly massage to relax and refresh your body & mind!

5 + 1 Massage Package

You get **5 x 1 hr** massages
PLUS these extras—FREE:

1 x 1hr massage

Extra 1/2 hr session: treat yourself to
a facial or another massage

Carol Bannister,

Careem Wellness Spa

Ph: **362 8878** www.careem.co.nz

Book now— because I care about you!

Holiday home rentals made easy.



*...it's all
taken care of*

0800 42 22 42 | bachcare.co.nz



**first
national**
REAL ESTATE | Rotorua

**Thinking of Selling
then talk to
someone compelling**

**who understands the need
to believe in the area
as well as your home**

**“Living at and Loving the Lakes
for the past 36 years”**

**Call Cathy today for your
no obligation Free Appraisal.**

Cathy Lines

Lake Tarawera & Lake Okareka

07 362 8112

021 033 7707

cathy@rotoruaproperty.co.nz



Lake Okareka Community Association Article – March 2014**Hon Todd McClay—MP for Rotorua**

These first few months of 2014 have been extremely busy – I very much enjoyed joining many residents at your recent Community Association AGM. I wish to commend the members and committee on their hard work on behalf of the wider Lake Okareka community and including the way that the DoC campground has been managed and provided an important financial return to the Association.

Cleaning up Rotorua's lakes has been a priority for our city for many years. Much work has already been done and across Rotorua we are starting to see real progress both in policy and in the improving quality of all our lakes. The significant contribution by Okareka residents must be recognised. In particular the changes that have been accepted including the adoption of the waste water system have already had a positive impact on the lake.

In 2014 this continues to be a major focus for the Government and me as your MP. At the heart of our "Bluegreen" vision is the belief that successful economic and conservation policy can, and must, go hand-in-hand. A stronger economy can better provide the means to restore, maintain, and enhance the environment.

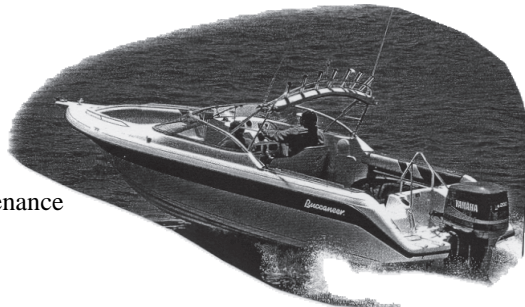
I look forward to continuing to work with our communities, including Lake Okareka residents, to return our waterways and communities to better health.

My Rotorua office is open from 9am to 5pm, five days a week and I hold regular constituent clinics each Friday. I am often in the Lake Okareka area and would welcome the chance to meet if you have an issue or concern you'd like to discuss with me. To make an appointment, please get in touch with my friendly staff on (07) 348 5871 or email me directly at rotorua.mp@national.org.nz.



Call and see Sean
and the team at
TELFER MARINE
for all of your boating
requirements:

- ☼ Boat servicing and maintenance
- ☼ Large range of chandlery
- ☼ New and used boat sales



236 Te Ngae Road, Rotorua, New Zealand. Phone: (07) 345 9854

Fax: (07) 345 9857

Email: sean@telfermarine.co.nz





LAKE OKAREKA FISHING CLUB 2006

LAKE OKAREKA 2014 SUMMER TROUT FISHING TOURNAMENT REPORT

Thanks to everyone who entered and supported our summer tournament.

There were 66 entrants with a total of 51 fish weighed but there were 103 fish caught. The competition was again great fun, with the weather proving very cooperative.

We would like to send out a **BIG** thank you to Sean from Telfer Marine for the support and sponsorship of many amazing prizes. Once again thanks to our awesome weigh masters John and Eben Herbert.

Also a thank you to LOCA for their kind donation and running the sausage sizzle.

Congratulations to the following winners:

Leah Van Boven	Junior Female Biggest Fish (1.9kg)
Matthew Gatenby	Junior Male Biggest Fish (1.69kg)
Maria Haines	Adult Female Biggest Fish (1.75kg)
Sasha Cox	Adult Male Biggest Fish (2.09kg)
Liam Gatenby	Best Condition Factor (47.84)

To all those that have enquired about the WINTER COMPETITION it will be held on **5 and 6 July 2014**.





Matthew Gatenby



Sasha Cox



Liam Gatenby



Leah Van Boven