



THE NEWSLETTER

**Lake Okareka
Community Association (Inc.)**

**April, May and June 2015
www.lakeokareka.org**

The Newsletter

of the

Lake Okareka Community Association (LOCA)

Issue 2, June 2015

Issue dates: 20 March, 20 June, 20 September, 20 December

Copies printed: 300

Deadline for copy: 1st of the month of issue

Advertising rates per issue: Quarter page \$35, half \$50, full \$90

Classified adverts: Free for 1st listing/free items (4 lines)

Editor: Maria Haines—phone: 3628 960 email: mariaanddean@xtra.co.nz

Your Committee:

Geoff Palmer **Chairman** **3628 379** (Chair Rotorua Lakes Community Board)

Sandra Goodwin **Secretary** **3628 865**

Bryan Walford **Treasurer** **3628 224**

Debbie Surtees **3628 760** **Marcel Van Leeuwen** **3628 468**

Cheryl Lyons **3628 790** **Carol Christian-Price** **3628 702**

Matt Harvey **3628 971** **Harm Zuidmeer** **3628 178**

Mike Vincent **3628 376** **Katy Hodgson** **3628 857**

DISCLAIMER STATEMENT

The views and opinions expressed in this Newsletter are not necessarily those of the LOCA Committee.

Front cover:

Six members of the Lake Okareka Volunteer Rural Fire Force who participated in the Sky Tower Stair Climb Challenge. For further details refer to the Lake Okareka Volunteer Rural Fire Force update on page 5.

Pictured from left to right are Stu Lyall, Adam McHugh, Phil Muldoon, Phil Rennie, Kierin Oppatt and Blair Gilbert.

CHAIRMAN'S UPDATE—JUNE 2015



Greetings from the LOCA committee and a welcome to winter together with a reasonable lake level at long last.

Firstly congratulations once again to the **Okareka Volunteer Rural Fire Force** on their winning performance at the Sky Tower Stair challenge in Auckland. Not sure how you train for this event but Phil and his team got it right. Well done.

Submissions to the Rotorua Lakes Council's

10 year **Long Term Plan** have recently closed and included in this newsletter (pages 6 and 7) is the submission from the Rotorua Lakes Community Board which of course includes Okareka.

You will note the reference to a proposed new **Waste Strategy** where the Council's preferred option for refuse collection is to move away from weekly bag collections to kerbside wheelie bins for refuse and recyclables. This system is cheaper than the existing paper bags but there are a number of drawbacks particularly around the "bush" settlement lakes (Tarawera/Okareka).

There is a lot more feedback required for this change and we hope Council will be flexible in perhaps offering different options for properties with steep access from the road and also for holiday home guests. One of the areas that will benefit from any improvements are the public reserves (Blue Lake, Boyes Beach and the lakefront at the jetty) that currently have the infamous unhygienic 44 gallon drums with no liners and no lids. Also there are no recycling containers at these picnic locations so much of the rubbish is glass and plastics.

Also unclear at present is the future of the very popular Tarawera/Okareka **Recycling Facility**.

As if there aren't enough submissions at present we also have **A Representation Review** which is a legal requirement for the 2016 Local Body elections. The situation at present is:

1 Mayor

12 Councillors elected from across the entire district

1 Community Board 4 elected members from the Lakes catchment and 2 Councillors.

The number of Councillors can be increased or decreased (6–30). The district could be divided into Wards as has been the case in the past. Community Boards can be established if there is a "community of interest" eg the Lakes.

This review is an opportunity for all residents to have a say on the future governance of Rotorua.

Whilst it is not directly relevant to Okareka you may have received a notice from the Regional Council asking for comments on **The Tarawera Restoration**

Plan. This is an Action plan similar to the Okareka Action Plan of 2004 that resulted in the installation of reticulated sewerage. The same action is strongly recommended for the Tarawera urban area but unfortunately, unlike the Okareka situation, there is no subsidy available for Tarawera sewage at the present time. The Restoration Plan is available on the Bay of Plenty Regional Council website and contains some interesting history of Tarawera and the eight surrounding lakes that drain directly into Lake Tarawera either via surface or sub-surface flows.

As always we welcome comments on any issues of interest to our residents and property owners.

Geoff Palmer

Chairman

A Touch of Elegance

Beauty and Nail Specialist

Gel Polish Manicure - \$44

Brazilian Wax - \$44

Lash Tint, Brow Tint & Brow Shape - \$28

1/2 Leg Wax - \$22

Don't let yourself go just because it's winter!

Lake Okareka's very own beauty and nail salon, where all treatments are done in a professional, relaxing and friendly environment with VERY reasonable prices.

I look forward to seeing you soon.

13 Summit Road, Lake Okareka

*Phone Vana on
07 3628 007*

EFTPOS AVAILABLE

email: atouchofelegance01@gmail.com





The Lake Okareka Volunteer Rural Fire Force

Well, looks like winter has finally kicked into gear. All the rainy, windy and frosty conditions we have experienced lately are a timely reminder to take care on potentially greasy or icy roads, and to look out for fallen trees. Also, as fires are being used regularly on these chilly nights, please ensure that your chimney has been swept recently.

Hopefully, your local Fire Force has not been quarantined with measles following a warning that was released by public health officials who are carrying out contact tracing for the virus, which includes all those fire fighters who competed in the Sky Tower Stair Climb Challenge. Unfortunately, one participant was confirmed as having the virus in the days following the event.

Despite this hiccup, the six Lake Okareka Rural Fire Force members who went up to Auckland for the Challenge all completed the event in good times. In fact, two of our team members, Adam McHugh and Kierin Oppatt, took out first and second place respectively in our category, and we also took out the Number 1 spot for fastest team.

A huge thank you to all those community members who donated so generously to the Leukaemia and Blood Cancer New Zealand cause, and thanks also for the messages wishing us well. This year's Sky Tower Challenge event raised a staggering \$1.018 million to support victims, their families and ongoing research, which is an amazing result!

This last weekend also saw us assist LOCA with marshalling for the 3D event on and around the Blue Lake. A big thank you to not only my members but also Sandra Goodwin for her continued co-ordination of volunteers for this annual event. Sandra is a true unsung hero of this community.

The Lake Okareka Fire Force is in the process of applying for further funding for replacement of our fire station and water tanker. If you have any expertise (e.g. electrical, plumbing) or are able to help financially, we would be grateful for any assistance offered for these projects. Bearing in mind that the old fire station was built some 32 years ago solely by the local community, input from the community would again be welcomed.

Recently, we also saw another Youth in Emergency Services (YES) group graduate from the programme that was run over March/April. This group was selected from Work and Income. Additionally, one of the previous YES programme graduates received an award from the Minister for Youth, the Hon. Nikki Kaye, at the 2015 Youth Awards held in Parliament last week at which I was privileged to attend.

Later in the year, we are looking forward to another visit from Zane, Degg and Imogen, the travelling performers whose entertaining display was well received by local families at the fire station last year. We will notify the community of the date further down the track.

For anyone wanting to contact the Lake Okareka Rural Fire Force, please phone me on 3628874 or go to our website: www.okarekaruralfire.com.

Phil Muldoon—Chief Fire Officer

ROTORUA LAKES COMMUNITY BOARD

Submission to the Rotorua Lakes Council Long Term Plan

Established in 2007, the Rotorua Lakes Community Board has four elected members and two Rotorua Lakes Council-appointed councillors. The board advocates on behalf of residents and ratepayers of Lakes Rotoma, Rotoehu, Rotoiti, Okareka, Tarawera, Okataina and their surrounds.

TOURISTS AND VISITORS TO ROTORUA

Rotorua has long been one of New Zealand's premier tourist resorts and has an international profile for its Maori history and outstanding environmental features around the Rotorua lakes attracting many tourists, visitors and events every year.

It was therefore disappointing to note that there was no reference to tourism in the 2015-2025 Long-Term Plan Consultation Document. The Lakes Community Board would like to point out to Council that there are a number of areas that need improvements if Rotorua is to continue to attract its share of the growing number of visitors to New Zealand.

In 2011 as a result of concern from lakes residents of the impact of ongoing Pressure on the Lakes the Community Board commissioned a "Review of Leisure and Recreation Policies and Facilities on Rotorua Lakes". The key recommendations of this report were incorporated into the RDC's 2011/2012 Long Term Plan and the Executive summary is attached to this submission.

A number of these recommendations have been actioned, however there are important facilities that urgently require upgrading at a number of public reserves around the lakes. These include; rubbish and recycling facilities, toilets, landscaping and a mishmash of signage (RLC, BOPRC, DOC, F & G). It is also disappointing to note there are few signs detailing the Maori history relating to the lakes and we believe Rotorua is missing out on a great opportunity for "free" publicity.

We also believe it is now timely to update this report to take account of the changing pattern of visitors (campervans) and their interests (mountain bikes, walking etc).

Can Council please give consideration to including an updated APR report in the Long Term Plan.

TARAWERA LAKES RESTORATION PLAN

The Restoration Plan for Tarawera was published by the Regional Council in November 2014. This is the last of the Rotorua Lakes Action Plans that addresses the pollution problems caused primarily by the effluent discharge into the lakes from septic tanks and run off from pastoral farming.

The Action No 1 in this report is "Reticulate houses in the Lake Tarawera urban community and upgrade conventional septic tanks outside the future reticulation zone"

At the request of the Rotorua Lakes Council the LTRA committee with support from the Lakes Community Board has been very active in the past 18 months to ensure the Tarawera ratepayers will support a reticulated scheme on a similar basis to the cost and subsidy applied to the Lake Okareka

sewerage installation. There has been excellent support to date and the LTRA committee and community expectation has been that planning is in hand and subject to a subsidy the catchment would have reticulated sewerage within the next 5 years.

To now read in the LTP Consultation Document that Tarawera, Rotoehu and Mamaku are not included in the capital programme for the next 10 years is extremely disappointing. Surely they must be included subject to exterior funding ?

Not being included in the 10 year plan sends a very negative message to the community, possible funders and an embarrassing about face from the Lakes Council.

At the same time the Council is proposing a very significant and unwelcome rates increase to move quickly to a balanced budget situation. We have been let down by Council.

DRAFT WASTE STRATEGY 2015

We have only had this proposal for a short time and with many of the properties in the Community Board catchment being holiday homes it has not been possible to receive a lot of feedback as yet. However it is very apparent that a number of factors will need to be taken into consideration.

- Bush settlements with few footpaths, steep access from house to road.
- The very significant increase in population over peak summer months (Dec/Jan/Feb/March)
- Narrow winding roads (Tarawera) being too dangerous to cope with stop/start trucks.
- Options for people renting holiday homes disposing of rubbish when they leave.
- Options for property owners to dispose of green waste.
- What future for the very popular Tarawera/Okareka recycling facility ?
- A number of Council's give homeowners the option of paper/plastic bags and/or MGB's

The replacement of the blue bins on public reserves with smart rubbish containers and recycling facilities (e.g. Taupo) is very important to enhance the premium holiday image for Rotorua that is sadly lacking at present.

We wish to speak to our submission.

Geoff Palmer

CHAIRMAN

N.B. The Lakes Community Board fully supports the submissions to the Long Term Plan from

Lakes Water Quality Society

Lake Tarawera Ratepayers Assn

Lake Okareka Community Assn

Lake Rotoiti Community Assn

Lake Rotoma/Rotoehu Ratepayers Assns

THE LEWIS PLUMBING COMPANY

*Registered Craftsman
Plumbers & Gasfitters*

Ph: (07) 343 9060
57 Tallyho St, Rotorua
jon@lewisplumbing.co.nz
www.lewisplumbing.co.nz

Chris Smith
glass
professionals



CALL 07 348 5038
24 Hour Service

91 Riri Street, Rotorua
info@chrissmithglass.co.nz
www.chrissmithglass.co.nz

24 HOUR
GLASS SERVICE
CALL OUR TEAM
OF PROFESSIONALS

NEW SERVICE
Auto Glass

*All makes.
All models.*

- Splash Backs
- Mirrors
- Frameless Showers
- Window Tinting
- Glass Balustrades
- Window Maintenance
- Retro Fit *Double Glazing*
(to Existing Aluminium & Wooden Joinery)



TIKITAPU SCENIC RESERVE PEST CONTROL PROGRAMME

The programme for the 2015 pest control has commenced with two working bees held in May to commence preparing the lines. The programme for the rest of the year is:

Tikitapu Working Bee Programme 2015

Trimming Lines, checking stations etc.

June - Sunday 21 & Monday 22

July - Friday 10 & Sunday 12

Pre Bait Monitoring

Trakka cards and Wax tags out—Saturday 25 July

Trakka cards in – Sunday 26 July

Wax tags in – Saturday 1 August

Bagging baits

Wednesday 5 August

Wednesday 19 August

Bait laying

Baits out – Friday 7 and Saturday 8 August

Top up – Sunday 23 and Monday 24 August

Clear stations – Sunday 20 and Monday 21 September

Post Bait Monitoring

Trakka cards and Wax tags out - Saturday 26 September

Trakka cards in – Sunday 27 September

Wax tags in – Saturday 3 October

There will also be **two planting working bees** which are ideal for people who are no longer able to manage going up and down the bait lines.

Saturday 22nd August, a combined working bee with Forest and Bird, Rotorua Botanical Society and Landcare Okareka to plant opposite the start of Benn Rd, in behind the area planted several years ago.

Sunday 6th September, assisting Kiwi Conservation Club to extend their planted area at Hamurana.

Bird counts will be repeated in November.

We would be delighted to have some new volunteers join us for these projects. Our working bees start at 9am and we expect to be finished by 12 noon. Reasonable fitness is required.

Frances Blakely jandfblakely@gmail.com



LAKE OKAREKA PRESCHOOL NEWSLETTER

Farewell to Summer and her family Tammy and Cabos Botes. Thank you to the Botes family for the grapevine which we will soon plant in our Preschool Community Garden. At the end of term we will have a farewell for the children who are graduating to school—Ari Dravitzki, Arlo Garden, Sophie Loveless, Nico Alexander and Sam Trass. Happy school days. Welcome to Jack Bray and his

Mum and Dad Sarah and Matt.

Learning experiences this month

After the children's interest in birds we were fortunate to have the opportunity to see a show by Capital E called Kiwi Moon. After learning the story the children enjoyed the characters, props and great story and music that is offered in this show. All of the children were able to attend the show.

The children have been learning about the seasons and the changes of the natural world. We have made leaf pictures, screen prints with autumn leaves, investigated what are jungle animals and much more. They have experienced roasting orange kumara and taste tests of sweet, sour bitter, salty and umami. Carpentry has also been popular this term.

This term we have featured movement and physical play as areas extending



children's awareness of their bodies needs. Some of the learning experiences have been around drawing body's, dance, movement, sock wrestling and setting their own physical challenges on the playground monkey bars. This term the teaching team have registered the Preschool for recognition of the Healthy Heart Award and will set some new learning goals for increased understanding of nutrition and movement for learning. A moving child is a learning child. Once again the extended session children have shared their ideas of what they would like to learn at Preschool. These ideas have been linked to learning experiences shared by the group. Group experiences strengthen the children's understanding of entering school and being a collaborative learner working alongside others.

Working bee

We had a lot of support for our working bee with only a few tasks to complete so we will be having another one in June to complete those areas.

Playgroup for mums and children to visit

If you would like to visit our new Playgroup sessions held on Wednesdays between 9.45—11.30 with your pre-schooler please phone Debbie 362 8696 to enquire about spaces. This is an opportunity we offer for you to find out what we offer for children's learning in the early years. Preschool closes for the school holidays on Friday 3rd July and reopens for term 3 on Monday 20th July.

Cardboard /paper recycling—Please continue to recycle your cardboard and paper at Preschool, this supports both the Preschool and the environment.

Enrolments—For enrolment enquiries please contact Debbie on 362 8606. Like us on Facebook www.lakeokarekapreschool.co.nz





LAKE OKAREKA TENNIS CLUB

Winter Play:

The Club winds down over the winter months. Coaching for children starts again in October for the spring eight week session. This is a great opportunity for new people to Okareka to integrate their children and meet the locals. The season at our Club starts in October.

If you wish to get some coaching over the winter then the Club coach Henry Gers is available at the Rotorua Club in Manuka Crescent Rotorua. Henry may be reached on 021 627 013.

Contacts for the Tennis club: John 362 8282; Hongli 362 8106; Gert 362 8835 or johnbattersby@xtra.co.nz



Lakes Electrical Ltd.

442 Spencer Road, Lake Tarawera, 3076
Home: 07 3628944 Mobile: 021 0298 1942
www.lakeselectrical.co.nz

For all your current needs

In the Rotorua area

Industrial, Commercial & Domestic Electricians

- | | |
|--|---|
| <ul style="list-style-type: none"> • Installations – New Builds, Extensions, Renovations etc. • Hot Water Cylinder – Complete Tank Drain & Element Change • Water Pumps • Spa Pools – Service & Maintenance • Appliance Repairs • Lighting & Power • CCTV | <ul style="list-style-type: none"> • Automated Gates – Supply, Installation & Maintenance • Security Alarms – Installations & Maintenance • Heat Pump and AC Installations • Maintenance – 24 hour call out • Fuse Board Upgrades • TV Satellite Installations • Fault finding |
|--|---|

For all your electrickery needs call Pete today
Home: 07 362 8944 Mobile: 021 0298 1942

*****NO CALL OUT CHARGE*****

HAVE YOU SEEN THE LITTLE YACHTS RACING?

A group of people have been coming over the past couple of months to race their radio controlled yachts on the lake, in the area along from the jetty and ramp on Acacia Road. The yachts that they are racing are IOM - International one metre radio controlled yachts. They have been coming each week on Mondays, Wednesdays and Fridays - when the weather is okay - from about 12 noon through to around 3pm in the afternoon.

This group of people would welcome anyone else who would like to join them, no matter what type of radio controlled vessel you have. They can handicap if necessary.

They have the gear that gives them a count down into the start of the race and also course marker buoys. They also have boats that people can "have a go at racing" with. Please feel free to at least go and watch them when you next see them at Acacia Road reserve area. What about "having a go" at this? It looks like great fun!

Contact names and phone numbers:

Dusty Wardell (07) 345 9080

Bruce Simmons (07) 347 7992

John Heald (07) 347 4325



MARITIME SUMMARY—SUMMER 2015

The Rotorua Lakes saw an unusual season with some lakes being busy and some having a low turnout of vessels this summer. This was against the trend considering the amount of sunshine but may be contributed to the amount of wind that made it look that conditions are unpleasant.

It is unfortunate that we are showing a significant increase in some bad boating behaviour. The largest increase is the amount of boats towing without an observer. On the positive side we have seen a decrease in this area from jet-ski operators. Policy is that anyone apprehended breaching this By-law will be issued with a Breach of By-law notice and the Maritime unit will then follow it up with an infringement notice. There is zero tolerance in this area and we aim to get the message through that it is an unacceptable practice, regardless of circumstances.

The next highest increase we have seen is boats exceeding the 5 knot restrictions. Yet again we have seen a decrease from jet-ski operators. These 2 breaches that have increased could be due to the fact that we have stomped on the jet-skis and the boat operators have become more complacent. What these results do show us is that there is a problem and it gives us a very good direction for next season.

We are very fortunate to have conscientious wardens in the Rotorua area who give up their valuable free time in assisting us keep the area safe. We are especially grateful for the support we get from Sandra and Mike Goodwin, your work is gratefully appreciated.

As some of you will be aware we no longer have a Harbour Master in the Rotorua area. This position has been dis-established as it has been in Tauranga and Whakatāne. Through restructuring we have a new Regional Harbour Master/Maritime Manager. This position is held by Mr Peter Buell who is based in Tauranga. Peter has vast experience both in Maritime and local government and his expertise has already proved very valuable. Peter can be reached on 0800-884880 or you can email him at: peter.buell@boprc.govt.nz

You will see a new look in our vessels and jet-skis in the 2015/16 season. In line with not having a resident Harbourmaster we have rebranded our vessels with “Maritime Patrol”. This is to remove any confusion about the Harbourmaster name and to also visually let people know that these are patrol vessels and are there to do just that. The word “Patrol” was chosen to raise the awareness that there are enforcement officers on board. We hope that this new branding will get people to think twice before doing something that will be actioned by the issuing of an enforcement notice. Additional to that it may prompt skippers to ask questions so we can also be more educational.

As always, we aim to give our best service and are here to keep boat/jet-ski operators safe. If you have any queries please don't hesitate to contact us.

Ross Powell
Maritime Officer

LAKE OKAREKA PIPELINE REPLACEMENT

The construction work for stage one of the Lake Ōkāreka Pipeline Replacement project started in February 2015. Reinstatement of the site and any minor tasks were due to be completed by the contractor by the end of May. Most of the stage one works were completed by the end of April and include:

- ≡ replacing 150m of the 450mm diameter concrete pipe with a 600mm diameter polypropylene pipe. Polypropylene is more resilient than concrete
- ≡ the replacement of the concrete inlet structure
- ≡ replacing the existing valve with a refurbished valve.

Prior to construction starting, plants were removed from around the inlet structure to give the contractor easier access. Landcare Ōkāreka has volunteered to plant this area at one of its upcoming working bees.

Note: The timber and concrete weirs in the channel by the inlet structure were only there temporarily for the construction works.

Marnie Fornusek
Graduate Engineer
Bay of Plenty Regional Council
Ph: 0800 884 880 x9516

Operation of the Outlet

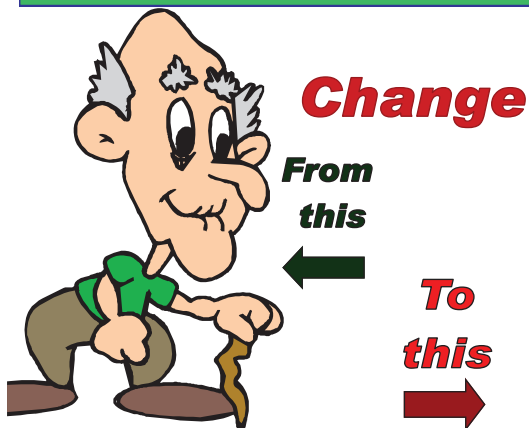
The LOCA Committee have requested a meeting with Bay of Plenty Regional Council (BOPRC) engineers to discuss how the operation of the outlet will proceed, following this upgrade. The outlet valve is managed by engineering staff from Rotorua District Council under a contract to Bay of Plenty Regional Council. BOPRC hold the resource consent for the outlet and it's operation.

When we hear back from BOPRC engineers with a date and time, we will let everyone know, so if any members of the Lake Okareka community wish to attend they can.

Sandra Goodwin
Secretary
LOCA



Stop Feeling Old and Creaky!



Are you feeling achy, tired and generally under par?

Do you wish you could hibernate until winter ends?

Would you like to feel happier and energetic?

As winter bites, we could all do with a little extra TLC. At Careem we help you to fight off the winter doldrums, so you can feel younger, healthier and more alive.

Our cosy, warm clinic rooms and a "feel-good" treatment will lift your spirits. After many years of helping people feel

rebalanced, Carol is skilled at using her hands to read your body. Deep or light touch, healing energy or warm bamboo, nourishing facial or a natural tonic, she selects just what your body needs to heal itself!

Treatments include:

**Relaxing Massage
Rejuvenating Facials
Pick-Me-Up-Herbal Tonics
Pamper Packages**

Call Carol NOW and start looking forward to winter!



Carol Bannister, Careem Wellness Spa
89 Acacia Rd, Lake Okareka, Rotorua ph 07-362 8878
careemspa@gmail.com www.careem.co.nz



FILE NOTE

File Note From: Stephanie Bathgate

Land Management Officer - Rotorua office

File Reference:

Date: 26 May 2015

Subject: Lake Ōkāreka hornwort monitoring 2015

Below is an outline for the BOPRC dive monitoring completed in order to detect the aquatic pest plant hornwort (*Ceratophyllum demersum*) in Lake Ōkāreka for summer 2015.

Monitoring was scheduled for 27th March. BOPRC divers began their dives on historic sites in the northern bays of the lake (Boyes Beach and DOC campsite areas). Divers persevered with poor visibility until it was agreed that monitoring was not effective in such poor conditions. The water was extremely green in colour in the first 1-2m depth then quickly darkened in depths greater than 3m. Snorkelling in the shallows and around the raupo fringes was successful as the depth was less than 1m and had good light. Divers completed shallow water monitoring on snorkel around Boyes Beach. No hornwort was found. It was decided to postpone the dive monitoring to a later date when visibility had improved.

A second attempt at monitoring was completed 1st May. Visibility was still very poor in the northern areas but slightly improved in the southern areas and the shallow bay from Acacia Point along the walkway (Birdwalk Bay). All areas with historic and known hornwort plants were dived and checked. No hornwort was found.

Acacia Bay boat ramp site had a noticeable increase in filamentous algae. The thick strands of this bright green algae created a blanket, covering the substrate. This made it very difficult to determine what plants were underneath and could easily disguise small hornwort plants and fragments.

Due to no hornwort being found, spraying for this season (May, 2015) was not completed. This was because no direction could be given for where the contractor needed to spray. It does not confirm that Lake Ōkāreka is hornwort free as the reduced visibility could easily disguise smaller fragments and plants. It is a positive sign to see the regeneration of native aquatic plants colonising areas where hornwort was present two years ago.

Monitoring will be repeated in October/November 2015. This monitoring will confirm where spraying is required should hornwort be found.



Map showing monitored areas for summer 2015 dive monitoring.



REPORT FOR JUNE 2015

Any of you recently walking along the Lake Okareka Walkway will have noticed that a number of flaxes have been removed in the flax grove area past the point. The flaxes have been an on going problem requiring regular trimming back from the track by Landcare Okareka volunteers - a job that no one enjoys, and it ends up with ugly looking flax plants. The flaxes are also a problem for the Castlecorp mower guys, with leaves getting tangled around the mower blades. The flaxes growing along the fence are a problem to the Playne family farm "Longfords" and the farm manager, as they short out the electric fence. These are large varieties of flaxes that were originally planted at public plantings, under supervision of the then Rotorua District Council Landscape Architect. They were planted too close to the track and the fenceline. This was before Landcare Okareka was established. So recently Landcare Okareka and a representative from RDC met and discussed the problem and decided to remove some of the flaxes that were very close to the track. Castlecorp came with a small digger to remove some of the flaxes. More will be removed in the summer in the new financial year. Landcare Okareka volunteers will replant the area adjacent to the fence with a mix of manuka and kanuka, as the flaxes are removed. This is at present "a work in progress".

Further out along the walkway LO Volunteers worked in March and moved part of the track, as it has scoured out over time. We also cemented in place one of the picnic tables that had been moveable - it kept ending up being put in the lake and having to be shifted back to dry land.

We are now into winter planting time. We had a very wet planting day in May when some manuka and kanuka plants were put in where the track has been moved. A few brave and hearty souls went for a ride on Dennis Falconer's barge - thank you Dennis for the use of the barge! - and endured the wet weather to do this planting. Plants were also dropped in the area where the flax has been moved and later planted by LO volunteers.

Future winter time planting working bees will be in Taumaihi Reserve, at the end of Acacia Road; an area along the canal for Bay of Plenty Regional Council following the replacement of the Lake Okareka outlet pipeline; in the reserve at the start of the Lake Okareka walkway; opposite Benn Road in Tikitapu Scenic Reserve - this will be a joint Landcare Okareka, Rotorua Forest & Bird and Rotorua Botanical Society planting working bee; in the reserve area near the entrance to the DOC camp, Millar Road.

If you are keen to help, we would appreciate any time that you have to spare. Working Bees will continue to happen on the 4th Saturday of the month (unless otherwise notified). Watch out for the sign boards to go up - and please feel free to come and help.

Sandra Goodwin, Secretary, Landcare Okareka, phone 362 8865 or email sgoodwin@actrix.co.nz



Digger removing flaxes on Lake Okareka Walkway—April 2015



Landcare Okareka volunteers enjoy morning tea at Silver beach after shifting part of Lake Okareka walkway track - April 2015

LAKE OKAREKA WALKING TRACK REPORT—JUNE 2015

Over the summer, autumn and now into winter, working bees continue along the new Lake Okareka Walking Track—the section from the DOC camp back to Boyes beach. Monthly working bees are usually held on the first Saturday of each month. We have had volunteers from the New Zealand Air Force and also from ANZ Bank Fenton Street, Rotorua branch come to help with building the track. Hours of manual work have gone into clearing scrub, moving any valuable plants, and then shifting the topsoil or leaf litter or “duff” which in some places is quite deep, to get down to the Rotomahana mud layer. Then the track has been benched, and in some cases soil moved to make the track a better gradient, being mindful this section is being built to be wheel chair and push chair friendly.

In the meantime, the DOC camp has once again proved to be a good earner over the summer building the bank account to help pay for some of the costs of creating the track—edging timber, track gravel, drainage pipes, geo textile cloth, etc. Further funding applications for the board walks and bridges will be made in the coming weeks.

Thank you to everyone who has been coming to working bees over the past few months. We appreciate your support. This project will take a lot more time yet. We just have to be patient...



Chris Russell (left) talking with Katy Hodgson (right) in background is Philip Steele and Steffen Lotzmann

TIMM'S POSSUM TRAPS—JUNE 2015

These Bay of Plenty Regional Council funded Timm's possum traps are available on loan to any Lake Okareka residents if you contact Sandra & Mike Goodwin 362 8865. The Lake Okareka community has 10 traps which were funded as “loan traps” by Bay of Plenty Regional Council. These traps have been borrowed at various times by members of the community. If you are having possum problems – maybe eating fruit or flowers or they are making a nuisance of themselves at night – and you would like to borrow a Timm's trap, give us a call.

If you are not familiar to the “Timm's trap”, we will provide you with some instructions about how to use the traps. We will also give you some advice about what seems to work best as “bait” - such as apple with cinnamon, or apple and peanut butter. If you can, keep a note of any possums caught and pass that on to us when you return the trap. We like to know for our records what is being caught around the place and we can also pass that on to the Regional Council.



For more information or to borrow a trap, please contact Mike and Sandra Goodwin, phone 362 8865 or email sgoodwin@actrix.co.nz.



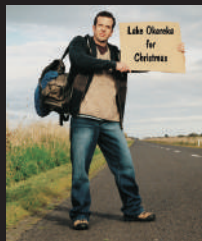
*Working on the new Lake Okareka Walking Track— May 2015
L to R: Brian Law, Chris Russell (obscured), Steffen Lotzmann, Andy Goodwin*

Holiday home rentals made easy.



*...it's all
taken care of*

0800 42 22 42 | bachcare.co.nz



MARKETING IS EVERYTHING

If you are considering selling, call me to discuss the best method of marketing your property to take advantage of current market conditions. I am committed to maximising the value of my clients' real estate assets. For totally professional service, call me any time.

Jenny Donne

M 027 385 0566

B 07 349 5356

jenny.donne@bayleys.co.nz

Success Realty Limited, Bayleys.
Licensed under the REA Act 2008

BAYLEYS

GARDEN BIRD SURVEY

Thank you to everyone who helped with Garden Bird surveys last year. This year we would like even more locals to take part. Landcare Okareka, as part of carrying out work on measuring the biodiversity of the Lake Okareka area, as part of the Biodiversity Management Agreement that we have with Bay of Plenty Regional Council, would like to undertake a Garden Bird Survey again this year.

It will operate along similar lines to the nationally run Garden Bird Survey which is carried out each year by Landcare Research. You are welcome to also pass the information that you collect locally on to the national survey as well <http://gardenbirdsurvey.landcareresearch.co.nz>.

The national survey is held from **27th June to 5th July 2015**, so we will carry out a local garden bird survey in this same time period.

Taking part is easy, spend just 1 hour (yes, just 1 hour!) sometime within the time period 27th June to 5th July 2015, looking for birds in your garden. For each species you detect, record the largest number that you see (or hear) at the same time. Please count, not just tick the species you observe. You will find the Garden Bird Survey form as a loose page with the newsletter to fill in and return.

If you need help with bird identification the on-line Garden Bird Survey web site will help.



Tui

*Sexes are similar, adults
black with white tuft on
throat*



SilvereYE (waxeye)
*Sexes similar; small,
green with white ring
around eye.*

Please fill in the survey form that is with this copy of the "Lake Okareka Newsletter" and either drop it back or post it to 2 Pryce Road, Lake Okareka, RD5, Rotorua 3076 before the end of July 2015.

We look forward to receiving your replies. We will print the results of the local Garden Bird Survey in the next edition of the Lake Okareka Newsletter.

Landcare Okareka Steering Committee



Rotorua's Specialist Mercury Dealer

Sales & Service

All makes & models of
outboard motors
MerCruiser stern drives

Marine Accessories

Including Life Jackets &
Ski Vests
Skis
Marine Electronics, etc



We are looking to buy or sell on behalf - good second hand boats.

Guaranteed workmanship from fully qualified marine technicians



31 Fairy Springs Road | PO Box 1337 Rotorua

P : 07 348 4997 or 0800 95 95 90 | F : 07 346 0037 | E : thompsonmarine@seaboss.co.nz



- Chainsaws
- Lawnmowers
- Reel Mowers
- Ride-On Mowers
- Line Trimmers
- Scrub Cutters
- Forestry Pruning Equipment
- Rotary Hoes
- Generators
- Blower / Vacs
- Water Blasters & Pumps
- Splitters & Chippers



Corner Old Taupo & Sunset Roads

PO Box 1337 Rotorua

P : 07 348 4441 | F : 07 349 2944

info@thompsonmowers.co.nz

www.thompsonmowers.co.nz

Sales & Service of Outdoor Power Equipment

Rotorua Agents for Husqvarna Outdoor Power Equipment,
including Chainsaws, Trimmers, Ride On Mowers, and more
Also stock and service Lawnmaster, Masport and Honda Power
products, Briggs & Stratton and Robin Engines



We service, sharpen and repair all makes and models

Thompson Trimming
Phone 348 4441

Upholstery | Repairs | Furniture Recovering | Boat Canopies
Squabs | Hull Linings | Forestry Clothing, chaps, pouches, etc.

REMEMBRANCE GROVE—LAKE OKAREKA WALKWAY

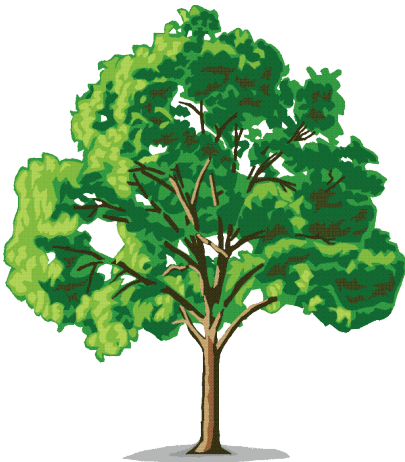
This is just a reminder about the Remembrance Grove out along the Lake Okareka walkway. The Grove is up on a bluff, part way along the walkway and set aside for the planting of trees to commemorate various human life events – special birthday, birth of a new child, wedding anniversary, death of a loved one and so on - for residents and property owners of Lake Okareka.

There is a little sign that points out where the Remembrance Grove path leaves the main walkway, and if you follow the path up there you will also find a seat made by one of the Landcare Okareka volunteers, for you to use while contemplating the area.

There is an RDC approved planting plan for the Remembrance Grove using five species of native trees – kowhai, rewarewa, titoki, rimu and totara. You can choose the species and siting of your tree from this plan.

At planting time, usually autumn/winter, at a time that suits, you will be provided with a good specimen of tree to plant from RDC Nursery. Landcare Okareka can assist in getting your tree out to the site, and even digging the hole for the tree. You will also be able to choose wording for the plaque, and Landcare Okareka will ensure this is made up, prior to planting time, and erected on site to mark your particular tree. A permanent record of the tree planting is also kept by RDC and Landcare Okareka. The cost for all this is \$200, payable to RDC – this money also future proofs the tree, if anything should happen to it.

We have had recently two further trees planted in memory of some former Lake Okareka residents. Now is the time to be thinking about this—if you would like to carry out a planting for this winter.



If you are interested in planting a tree in the Remembrance Grove please contact Sandra Goodwin 362 8865 or send me an email sgoodwin@actrix.co.nz and I will provide you with the paper work to get your commemorative tree planting project underway.

Sandra Goodwin
LOCA Secretary



INVESTING IN PROPERTY?

We offer a full range of
accounting services
for all sized businesses

Be sure to call us to discuss

- ≡ Ownership structures
- ≡ Tax deductibility of expenses
- ≡ Mortgage Security & Tax implications

MACMILLAN ACCOUNTANTS

31 White Street, Rotorua Phone 350 1018



REGISTERED PROPERTY VALUERS

Since 1974

- Commercial & Industrial
- Residential (including insurance)
- Lakes
- Lifestyle & Rural

**Trinity House, 1268 Haupapa Street, Rotorua
PO Box 2081**

ph: 07 347 6001 email: info@CGJ.co.nz

www.valuersrotorua.com



LAKE TARAWERA PLAYCENTRE

This term has seen a change in weather, both colder and wetter. But along with the change of season comes the beauty of Autumn. We have enjoyed walking around the community, admiring the colour changes, and collecting leaves for art work.

Also, the theme for this term was messy play. We have had many fun sessions creating gloop, foam or whatever the children feel would be interesting.

Tarawera Playcentre welcomes any families who would like to visit or join. Our current sessions are Monday and Thursday, 9:30 to 12pm. For further information please call Vanessa on 3628705 (Lake Okareka) or Robyn on 3628839 (Lake Tarawera).



TELFER MARINE LIMITED

Rotorua's Largest Range of Boating & Watersports Accessories

Sales & Servicing

All makes and models

Free pick-up/drop off locally

New and used boats

Come in and see our fully qualified technicians



236 Te Ngae Road Rotorua / P : 07 345 9854 E: sean@telfermarine.co.nz
www.telfermarine.co.nz

www.bargainboatbits.co.nz Free Phone 0508 262824



C A P E R S
 E P I C U R E A N

**Breakfast
 Lunch
 Dinner**

**Ph 348 8818
www.Capers.co.nz**

MINI SKIPS

ROTORUA

175 Okareka Loop Road
 RD5, Rotorua



BRIAN MOORE

Ph: 362 8576

Mobile: 021 741 446

“Norms back leading the pack”

Ray White®

His recent sales!



His holiday rental clients are a great source of buyers!

RAT BAIT AND BAIT STATIONS—WINTER 2015

Thank you to everyone who has been rat baiting over the last few months. There is still some rat bait available and it is a very good idea to keep the bait stations stocked up to help protect bird life in the area over the next couple of months.

Ditrac rat bait provided by Bay of Plenty Regional Council is, once again, available to individual property owners, to support enhancing the biodiversity at Lake Okareka. We are especially interested in getting even more lake-side properties involved with rat bait stations. We believe that the results Lake Tarawera are getting with the increase in numbers of dab chicks could be due in part to their successful rat bait programme. They have many lakeside properties there involved. If you are interested, but maybe feel that you do not come to your property often enough to keep the bait station full, please contact us. We may be able to work out a partnering system with someone who lives here permanently, and is prepared to keep your bait station filled.

Ditrac is a poison, and care must be taken when using it.

How to Use Ditrac Bait:

It is recommended that bait be fed in a type of bait station, fitted with a locating rod, that does not allow the rats to carry baits away to be stored. The baits have holes in them and they thread onto the rod. Rats and mice eat the bait in the bait station. The bait station protects the bait from the weather. It means also that bait cannot be eaten by non-target species such as birds, dogs, cats and children.

Bait stations are available by contacting Mike and Sandra Goodwin 362 8865 or email sgoodwin@actrix.co.nz. We have a new type of lockable bait station, like a small suitcase. They also have locating pins for the bait. Cost of these is \$25. Please give us a call if you would like to purchase a bait station for your property.

Do you have a bait station already? That's great if you do. When you collect your bait you will need to confirm your name and address and the address of the bait station. We need to update our data base about bait stations and where they are located throughout Okareka – and many thanks to everyone who has done this so far.

How do I get bait now? Bait is available in labelled, zip lock bags, containing 12 rat baits. This is enough bait to fill one bait station 2 times during a month. Bait stations should usually not be filled more than twice during a month, otherwise you are wasting bait and feeding potentially dead rats and mice.

If you require the bait or a lockable bait station for \$25, please contact Mike & Sandra Goodwin phone 362 8865, 2 Pryce Road or Rod Stace phone 362 8523, 30 Summit Road. **Please phone first to arrange a suitable time to collect bait or a bait station.**

2015 LAKE OKAREKA COMMUNITY TELEPHONE DIRECTORY

Please make the following changes to the directory:

Remove:	C & H Russell	191 Millar Road	
	L & J Beuth	9 Acacia Road	
	R Waller-Shand	11 Calder Road	
	R & G Penhale	10 Summit Road	
	D & N Kent-Kirby	57A Summit Road	
	N & R Henley	2 Ridge Road	
	P & K Scott	10 Loop Road (Lake Okareka B&B)	
	N Kelso	11 Ridge Road	
Change:	Papenfus	6 Calder Road	3628 235
	J Douglas	2 Calder Road	3628 448
	J Findlater	2 Calder Road	3628 448
	M & M Norrie	15 Steep Street	3628 119

For any corrections, additions or deletions please contact Carol on 3628 702.

LOCA SUBSCRIPTION 2015

- ≡ *Do you enjoy reading this quarterly newsletter?*
- ≡ *Aren't you pleased that someone represents you to the Council?*
- ≡ *Aren't the community events great fun?*

*These are carried out either by, or with the help,
of the Lake Okareka Community Association (LOCA),
but this work is not possible without your support.*

*Your chance to have a say, get involved
and keep informed is here now.*

*Simply pop \$20 in an envelope with your name and address
and either post or deliver it to:*

LOCA
C/O 23 Millar Road
Lake Okareka
RD5
Rotorua 3076



**first
national**
REAL ESTATE

| Rotorua

**Thinking of Selling?
Then talk to
someone compelling!**

**Selling your home is as much
about the home
as well as the area**

**The Signs Are There...
The Market Is On The Rise**



Call Me today

Cathy Lines

Lake Tarawera & Lake Okareka

07 349 8088

021 033 7707

cathy@rotoruaproperty.co.nz

"Living at and Loving the Lakes for the past 37 years"

CLASSIFIED ADVERTISEMENTS

Super dry fast start kindling—\$10.00 for 1 box or \$25.00 for 3 boxes. **Contact Hunter Potter, Ember Enterprise on 3628 556 or hunterjpotter@gmail.com**

Avon—my name is Caroline Wingate and I am an Avon representative. If you are interested in Avon please contact me on 3628 207, 021 148 9986 or cwingate@slingshot.co.nz.

Babysitter—My name is Lucy Phibbs and I am 14 years old. I am available for babysitting for daytime and evenings. I am enthusiastic and great with kids. **Phone: 3628 897**

Long term rental required by family of 4 who have lived at Lake Okareka for over 8 years and are very committed to this community. 3-4 bedrooms and garage/workshop space required. Phone Harm or Aly 362 8178

Are Wasp Nests a Problem for You?

If you can locate the nest, we can treat it - at NO cost. This is a community service offered by Landcare Okareka, with chemicals funded from donations received by the group—**phone Mike Goodwin 3628 865**

FREE—Marque available for community events. **Phone Cathy Lines**, Licensed Salesperson, Okareka & Tarawera Specialist. First National Real Estate. Mob: 021 033 7707 or AH: 07 3628 112

Sharpen your chainsaw on my electric grinding gadget for free or I will do it for \$5—**phone Bryan on 3628 224**

Pet Feeding Services - Pet feeding services over the holiday season and throughout the year, \$7 per visit includes indoor plants watered and mail collected. Limited boarding pens may be available—**phone Carol on 3628 702**

Heather Horton (Artist) - Watercolours, Oils, Pastels and lead-lighting work can be seen in the studio. Works are for sale, or can be ordered—**phone 3628 165**

Trees felled for free - Conditions apply—**phone Chris 3628 679 or Peter 3628 108**

Mobile Library visits every 2nd Monday at the bus stop opposite 19 Loop Road from 3.25pm to 4.10pm.

Trays made of recycled rimu - three sizes: 270x375 \$30, 310x450 \$40, 360x510 \$50 - **phone Bryan on 3628 224**.

Dry Blue Gum—only \$80 per m3 delivered to Lake Okareka/Lake Tarawera. Minimum of 2m3 for free delivery. **Phone Ngairi 345 7488 or 027 460 7056**

BK Transfers and Shuttles—24 hours shuttle service and personalized service to Auckland, Hamilton, Tauranga, Taupo and Rotorua cities/airports. **Phone Graeme 3628 867 or 027 3628 867**

House Cleaner Available—hourly rate. Ovens, Ironing, Windows. Anything you need cleaned. **Call Jenny 3628 063**

My name is Olivia Burman and I live at Lake Okareka. I am looking for **casual babysitting or weekend day nannying/ babysitting**. I currently work part time at Red Stag Timber Ltd. Call me on 3628 701 or 021 0644410. Reference checks available.

Lake Okareka Fishing Club



LAKE OKAREKA 2015 WINTER TROUT FISHING TOURNAMENT
PROUDLY SUPPORTED BY VIP REALTY



To be held on Lake Okareka from 5:00am Saturday the 18th to
12:00 noon Sunday the 19th of July.

TRY AND CATCH A BIG ONE!!

Trophy Categories:

Biggest Bag Individual
Biggest Bag Team
Biggest Bag Family
Biggest Bag Junior
Heaviest Trout – Adult Male
Heaviest Trout – Adult Female
Heaviest Trout – Junior
Best Condition Factor

All prizes will be by donation only

Registration:

Lake Okareka Lakefront Friday 17th 4:30–7:30pm
All anglers must hold current licence
(these will be recorded at registration)

Entry Fee:

Adult \$15.00
Junior \$10.00

Weigh In Times:

Saturday at Lakefront 1:30pm
Sunday at Lakefront 12pm

Prize giving:

Sunday from 1:00pm at the Lakefront

Sausage sizzle:

At the lakefront for prize-giving

Any prize donations gratefully accepted, contact Steve 3628 790, Dean 3628 960 or Jason 3628 448
anytime for more information.