



THE NEWSLETTER

**Lake Okareka
Community Association (Inc.)**

April, May, June and July 2018

www.lakeokareka.org

The Newsletter

of the

Lake Okareka Community Association (LOCA)

Issue 2, July 2018

Issue dates: 20 March, 20 July, 20 December

Copies printed: 300

Deadline for copy: 1st of the month of issue

Advertising rates per issue: Quarter page \$35, half \$50, full \$90

Classified adverts: Free for 1st listing/free items (4 lines)

Editor: Murray Walker: 021 0821 3250 email: mweltech@gmail.com

Your Committee:

Martyn Norrie **Chairman** **021 991 313**

Liz Harding **Secretary** **3628 108**

Stu Wallace **Treasurer**

Tony Bradley **021 487 233** **Dennis Falconer** **3628 737**

Matt Harvey **3628 971** **Debbie Surtees** **3628 760**

Colin Jackson **021 306 378** **Kim Lorigan** **3628 320**

Paul Martelli **3628 817** **Mike Vincent** **0274 781 899**

Mike Rayner **021 908 807**

DISCLAIMER STATEMENT

The views and opinions expressed in this Newsletter are not necessarily those of the LOCA Committee.

Front Cover:

Tarawera with snow — courtesy Siobhan Hunt .

CHAIRMAN'S REPORT— JUNE 2018



The beauty of autumn gives way to the darker days of winter at Okareka and we continue to be inspired by the beauty of the environment that we are privileged to call our home. It inspires the creative juices of artists, photographers and poets. One visitor to the lake wrote:

*Like an ancient bronze breastplate
The lake stretches under a rising sun
Gold beaten the water shimmers
And a new day has begun.
Silent shadows the black swan glide
Carving ripples in their way,
And tiny grebe dive for their food
Celebrating the break of day.
Clouds shot through with pink
Drift lazily across a bush clad hill.
Mist rises, the taniwha's breath,
And in this moment the lake world is still.
Who knows what secrets lie below
Or what stories this lake could tell?
It fills my mind with beauty and wonder,
And my soul sings that all is well*

Lyn Davis

Since our last publication your LOCA committee has continued to be engaged in activities for the benefit of our community.

We have been actively engaged with the Bay of Plenty Regional Council as they seek to devise a workable solution for the lake outlet. At this time we are in a considerably better position regarding lake levels than we were in last year. The outlet is flowing at 440 litres / second and there is capacity to increase the flow rate to 500 litres / second if lake levels rise significantly. The Regional Council are actively consulting with representatives from all groups who have an interest in the outlet as it impacts not only on local residents but also on the people at Tarawera who live in close proximity to the outlet. Engineering reports have been commissioned by the Regional Council and we are confident that a workable long term solution will be proposed this year.

We await the outcome of our submission to the Tourism Infrastructure Fund which would allow us to provide an improved ablution block at Boyes Beach,

enhanced launching ramp facilities and complete the track around the perimeter of the lake. We do not anticipate receiving any news about our submission until August 2018.

Water quality continues to be a top priority and we are in ongoing discussions with the Bay of Plenty Regional Council about the threat that catfish contamination presents to our lake. You can expect to read more about this in the coming months as the information campaign winds up ahead of the times when the lake is most heavily used. As local residents we will all need to be engaged in ensuring that our families, friends and others who visit the lake are well aware of this threat and what practical steps we can all take to reduce the risk of catfish or weed contamination.

LOCA continues to be one organisation among several that is working towards *Pest Free Okareka*. I applaud the efforts of the many volunteers who are actively involved in this project. LOCA has decided to focus its efforts in backyard trapping with trapping devices installed in the sections of every second or third property in the village. You will hear more about this soon and I would encourage you to participate in this initiative. As the work becomes increasingly effective the fruit will be obvious in the increase in numbers of our native birds.

We will continue to communicate with you through email and Facebook. If you have not been receiving emails from LOCA please ask to be put on our email list by contacting: loca.secretary@gmail.com

Keep warm and dry – but remember to get out and enjoy the fresh air - some days it is fresher than others!

Please get in touch with me if you have any questions or suggestions.

Kind regards

Martyn Norrie
Chair of your LOCA Committee
021 991313
martynnorrie@gmail.com

Brears Builders

Tarawera

Local Matt is LBP qualified and experienced in quality new builds and renovations.

He offers full contract or fixed price labour only / project management.

Brears Builders can also offer architect/build service with Bellbird Architect.

07 3628869 or 0275492424 anytime
www.brearsbuilders.co.nz
mattbrears@gmail.com



Chris Smith
glass
 professionals



CALL 07 348 5038
 24 Hour Service

91 Riri Street, Rotorua info@chrissmithglass.co.nz
www.chrissmithglass.co.nz



Auto Glass

All makes.
 All models.

- Splash Backs
- Frameless Showers
- Window Maintenance
- Mirrors
- Window Tinting
- Glass Balustrades
- Retro Fit Double Glazing
 to Existing Aluminium & Wooden Joinery



TIKITAPU SCENIC RESERVE PEST CONTROL PROGRAMME

Working bees to check and clear the bait lines commenced again in May and a good start was made in preparation for the actual pest control. Also, over the past few months some of our volunteers have been busy removing the base plates from the bait stations, adapting them with a baffle to keep the possums out, and then taking them back and replacing them in the bait stations. This is a result of the work Dave Edwards has done trialling various adaptations to the base plates and we are grateful to him for sharing his findings and for his advice. It will be interesting to see what results are achieved if we succeed in reducing the rat population without interference from possums, and are then able to target possums without rats destroying the baitbags intended for possums.

Monthly checks have been done on the Nature and Mistletoe tracks and any trimming or clearance of windfalls attended to. The Good Nature traps have also been checked monthly and any kills found, or counter strikes then recorded. There has been little activity reported which hopefully will mean the monitoring in July will also show less activity than in previous years.

This project is dependent on volunteers and I wish to thank all those who have been involved over the past months. It is always good to have some new people involved in the project and new volunteers are most welcome. Working bees start at 9am and normally finish by 12noon at the latest. There is a “cuppa” and something to eat when you get back to base. I would love to hear from you if you are interested in becoming involved with this project.

Kind regards,

Frances Blakely Ph 362 8480 email jandfblakely@gmail.com

Working bee dates for 2018.

Bait laying – Pindone bait

Top up – Sunday 12th & Monday 13th August

Rat monitoring to ensure rat numbers are low prior to Feratox® bait bags are put out

[Trakka cards](#) - out Saturday 18th August

Trakka cards – in Sunday 19th August

Put out prefeed baitbags and check amount of Pindone remaining

Sunday 26th & Monday 27th August

Feratox® baitbag laying and removal of prefeed

Sunday 2nd & 3rd September

Feratox® top up

Sunday 16th & Monday 17th September

Clear stations of remaining Feratox® and Pindone

Sunday 30th September & Monday 1st October

School holidays September 29th – October 14th

Post Bait Monitoring

Trakka cards and Wax tags out – Saturday 20th October Labour weekend

Trakka cards in – Sunday 21st October Labour weekend

Wax tags in – Saturday 27th October

**REGISTERED PROPERTY VALUERS**

Since 1974

- Commercial & Industrial
- Residential (including insurance)
- Lakes
- Lifestyle

Trinity House, 1268 Haupapa Street, Rotorua
PO Box 2081

ph: 07 347 6001 email: info@CGJ.co.nz

www.valuersrotorua.com



The Lake Okareka Volunteer Rural Fire Force

Hi all

On 13 June, the Lake Okareka Fire Force hosted an open night at the fire station to present the initial concept plans for the proposed development of the new fire and emergency station, and community civil defence resilience centre. Despite a cold, drizzly evening, there was a great turnout of local residents, both young and old. The discussions were supported by Fire and Emergency New Zealand personnel from local rural and urban units, and National Headquarters. Rotorua Lakes Council staff were also available to answer questions. Special thanks to the Deputy Mayor, Dave Donaldson, for his support.

The presentation provided an overview of emergency response over the last five years by the Lake Okareka Fire Force, and the aim to further build capability and community resilience for Lake Okareka and the wider district through the new station building and the facilities it will house.

Thanks to all those who came along for the evening, and the input and suggestions provided, which will be taken on board as the building design is finalised. The support and response from the community has been fantastic. If you have any queries or would still like to provide feedback on this project, please contact myself (021 890 508) or Dave Herries (021 435 623).

Over the last month or so, the Lake Okareka Fire Force has attended a number of callouts from the flooding in Rotorua City and Ngongotaha, to fallen trees and a roof that blew off in the high winds, and a number of fire-related incidents. These various incidents reflect the need for an integrated fire, emergency and civil defence response service, not only in our local area but across the district.

On another note, a team of seven members from Lake Okareka competed in the annual Sky Tower Firefighter Stair Climb, again taking out first place for the Donned team category for the fifth consecutive year. This year's team included: Lewis Shaw, Thomas Firth, Sam Weir and Quinn McCarthy who took out 3rd, 4th, 5th and 6th places respectively in the Open Donned category, along with Amber Muldoon who placed 6th in the Open Donned women, Matthew Carroll and myself. The team fundraised almost \$7,000 for Leukaemia and Blood Cancer New Zealand, with overall fundraising for the event achieving a massive \$1.27 million.

Finally, with the cooler months setting in, now is the time to make sure your

chimneys have been swept, and to take care on the roads as they become greasy or icy in the changeable weather conditions.

If you have been thinking about joining and would like to see what we are about, please come down to the fire station at 7:30pm on a Wednesday night when we do training or phone me on 3628874. You can also go to our website: www.okarekaruralfire.com.

Phil Muldoon



Artists impression of the new Fire Station





Lake Okareka Preschool News

Welcome to Kosuke Tsunokawa and his family who have moved to Okareka and Kosuke has joined Preschool. Farewell and graduation to Riley Neill, who graduated on Friday 1st June and to Jerome Assen who will graduate Friday 15th and Lily Brears who graduates at the end of this term.

Healthy Heart

We have achieved our Pā Haraheke Gold Healthy Heart Award and were presented with our certificate by Katie Pearson from the Heart Foundation.



Katie Pearson presents the Healthy Hearts Certificate to the preschool

The Pā Haraheke award provides recognition of healthy eating and physical activity within the Early Childhood Environment and supporting the wider community.

Sustainability

We have bottles of our own Liquid Gold (worm juice from our worm farm) in concentrated form for \$5 a bottle. Pop into Preschool if you would like to add this to your garden, it is fabulous to help those plants thrive.

As we make our own juice from the worm farm, the profits will support our Community garden.

We held a parent evening to make our own jam from all of our feijoas in our community garden and to share the skill of making bees wax wraps. The Preschool then went to the Sunday Farmers Market and had our first ever stall, we were able to sell all of our jars of feijoas chutney and feijoa and vanilla



jam.

The preschool mums hard at work making the feijoa jam

We are now selling our Preschool made beeswax wraps at Preschool, please give the office a call the if you would like to purchase these and support our Preschool.



The mums at work again!! This time making beeswax wraps...

Preschool Board AGM

Our AGM was held on Wednesday 13th at Preschool. We thank those parents for their generous support over the past year.

Debbie, Davina and Leslie

For all enquiries please contact

office@lakeokarekapreschool.co.nz

See our website www.lakeokarekapreschool.co.nz

Like us on Facebook

REVOLVER ESPRESSO

CAFE. COFFEE SUPPLY CO.
www.revolverespresso.co.nz

WHOLESALE COFFEE / BREWING EQUIPMENT /
AIRBNB / GIFT BASKETS / CAFE / OFFICE /
HOME / ORGANIC / ETHICALLY SOURCED
LOCALLY OWNED COFFEE DEALERS
1131 AMOHAU ST [INSIDE VETRO]
ANDREW PHILLIPS 0210379573



**Breakfast
Lunch
Dinner**

**Ph 348 8818
www.Capers.co.nz**

Landcare Okareka July Report



Volunteers with Landcare Okareka have spent the last few month's Working Bees tidying up and dealing to any weeds in previous planting areas, such as:

- = in the new planting at Boyes beach beside the Lake Okareka Community Walking Track
- = at the various toilet planting's in the area at the back of the sewerage pump station on Loop Road and down Summit Road
- = the gardens at the Community Hall
- = the end of Acacia Road and Taumaihi Reserve
- = along the Lake Okareka Walkway from Acacia Road carpark area

Weed trees such as cherries and strawberry dogwoods have been dealt to within the Tikitapu Scenic Reserve and other reserves. They are much easier to spot in the autumn as the leaves turn colour. Landcare Okareka Working Bees have been rained off a couple of times, but work has still been done. The June Working Bee was shifted to Sunday 24th June, working along the Walkway.

Thank you to all of the volunteers who came to help, and to the Landcare Okareka women supporters who provided a delicious morning tea.

Part of the reason for the change in the day, is because some members of Landcare Okareka Steering Committee attended a hui for representatives from Bay of Plenty wide conservation groups which was held in Te Puke on Saturday 23rd June. I will report next time about this hui.

It was a good opportunity to meet other volunteers undertaking similar projects and to learn from their failures, and successes.

It is pleasing to report that there are two new members on the Landcare Okareka Steering Committee, being Ross Wilmoth and Steve Goodin. Thank you to both Ross and Steve for accepting this challenge. They bring new and different skill sets that will be valuable to Landcare Okareka's ongoing projects. The LOSC is now made up of the following people: Rod Stace, Mike Goodwin, Steffen Lotzmann, Elli Walter, Brian Law, Ross Wilmoth, Steve Goodin, and Sandra Goodwin.

Ross Wilmoth and his wife Justine and children Amy and Luke, have all been enthusiastic supporters of Landcare Okareka from when they first purchased their property here. Ross and his children are also involved with the Landcare Okareka trapping project.

Steve Goodin, has recently retired and is getting his teeth into carrying out further bat monitoring in the Lake Okareka catchment, using some of the latest

bat tracking technology provided by a philanthropic Landcare Okareka member. Bat monitoring is another Landcare Okareka project under the Biodiversity Management Plan with BOPRC and DOC. This project is carried out by Landcare Okareka volunteers, in conjunction with staff from DOC Rotorua and private landowners around the catchment. This will build on the work that was done on bat monitoring back in 2013, when long tailed bats were found in the northern side of the catchment.

The Landcare Okareka Steering Committee remain very concerned about the high lake water levels. Quite a large amount of wildlife habitat vegetation was killed off with last year's high lake levels. One of the areas impacted was adjacent to the new Lake Okareka Community Walking Track, in the area near the Te Waiariki Pura Trust building. LO volunteers will be going back there to replant, but this time with species that we hope will tolerate wet feet, should the lake flood to the same extent as last year.

Unfortunately, we are unable to get any plants until August. We are getting 500 plants to put into an area in the Tikitapu Scenic Reserve. These plants have come via Department of Conservation (Paul Cashmore) and Te Arawa Lakes Trust (Nicki Douglas). These plants were a condition of the Bomb Comp's resource consent to hold that event at Tikitapu in the summer. This will be a joint planting with volunteers from Rotorua branch of Forest and Bird, Rotorua Botanical Society and Landcare Okareka. This planting will be on Saturday 25th August, and we hope many Okareka residents will be able to come to help with this planting.

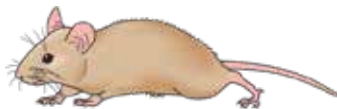
Don't forget to keep an eye out for the Landcare Okareka signboards that advertise the next Working Bee and where it will be held. Everyone is most welcome to come along. If you would like an email reminder please let me know.

Sandra Goodwin

Phone: 07 362 8865

Email: slgoodwin.nz@gmail.com

RAT BAIT AND BAIT STATIONS - Winter 2018



Thank you to those of you who have continued to put out rat bait over the past few months. There is still rat bait available and it is important to keep the bait stations stocked up over the winter and into the spring. This baiting work supports the work of the volunteers of Rotorua branch of Forest and Bird with the animal pest control in Tikitapu Scenic Reserve.

Ditrac rat bait is provided by Bay of Plenty Regional Council under Landcare Okareka's Biodiversity Management Plan. This bait is available to individual property owners, to support enhancing biodiversity at Lake Okareka. A number of properties have been sold recently. It is possible that those properties have had bait stations in the past. Look out for either bait stations that are made in a "T" shape from plastic drainage pipe or a small black plastic box.

Ditrac is a poison, and care must be taken when using it.

How to Use Ditrac Bait:

It is recommended that bait be fed in a type of bait station, fitted with a locating rod, that does not allow the rats to carry the baits away to be stored. The baits have holes in them and they thread onto the rod. Rats and mice eat the bait in the bait station. The bait station protects the bait from the weather. It also means that bait cannot be eaten by non-target species such as birds, owls, dogs, cats and children.

Bait stations are available by contacting Mike and Sandra Goodwin 362 8865 or email slgoodwin.nz@gmail.com.

We have a new type of lockable bait station, like a small suitcase. They also have locating pins for the bait. Cost of these lockable bait stations is \$20.00

Do you have a bait station already?

That's great, if you do. When you collect your bait you will need to confirm your name and address, and the address of the bait station. We need to update our Landcare Okareka database about the bait stations and where they are located throughout Okareka - and many thanks to everyone who has done this so far.

How do you get bait now?

Bait is available in labelled zip lock bags, containing 12 rat baits. This is enough rat bait to fill one bait station 2 times during a month. Bait stations should usually not be filled more than twice during a month, otherwise you are wasting bait and feeding potentially dead rats and mice.

If you require the bait or a lockable bait station, please contact Mike & Sandra Goodwin, phone 362 8865, 2 Pryce Road or Rod Stace phone 362 8523, 30 Summit Road.

Please phone first to arrange a suitable time to collect bait or a bait station.



WE HAVE TO STOP THE SPREAD OF CATFISH

Catfish are an unwanted pest that not only threaten trout and our native species, but they also lower water quality by churning up mud. They're already in Lake Rototiti and if they continue to spread, they could devastate all our lakes.

Stopping them from spreading won't take you much time but it does take everyone helping.

BEFORE YOU LEAVE A LAKE OR ANY OTHER WATERWAY:

- 1 Remove all weeds from your boat, trailer and gear.
- 2 Empty any ballast or water tanks.
- 3 Don't leave your trailer in the water, catfish love hiding in them.



KEEP OUR LAKES GREAT
stopthespread.co.nz



Predator free Okareka

LOCA would like to see the Lake Okareka settlement become predator free. To do this we need the community to get involved to help eradicate rats, stoats, weasels, ferrets, hedgehogs, possums and mice.

There are two ways you can participate become a predator free street champion and/or have a trap in your backyard. The role of the street champion will be to help neighbours to set a back yard trap and to provide support. We already have street champions for Acacia Rd, Loop Rd, Calder Rd, Branch Rd and upper Millar Rd.

This initiative is part of the Predator Free NZ <https://predatorfreenz.org/>. The LOCA committee has voted to provide some funds towards purchasing traps and we have also applied for a grant from Kiwi Bank we will know by the end of July if we have been successful with our application.

Our plan is:

August – street champions identified and a short workshop to exchange ideas and knowledge

September – street champions engage with the community so we can determine how many traps we need.

October – purchase and deploy traps.

If you would like to be a street champion please contact:

Mike Vincent 07 362 8376

Lakeshore trapping

This is continuing and our latest results are.

Man hours	1180.65
Rats	1300
Hedgehogs	204
Ferret	39
Stoat	5
Weasel	5
Ferral cats	7
Mice	130



Help the Kereru by making Lake Okareka predator free

LAKES CONTRACTING

LAWNS, TREE REMOVAL, CHIPPING, RETAINING WALLS, GENERAL
SECTION MAINTENANCE AND MANAGEMENT

Trees getting out of control!!

We can trim or remove troublesome trees, with our
new commercial sized chipper.

Convert most of your trees into useful compost
under your trees and on your garden.

Earle, Scott and Debbie Morris

253 Spencer Road, RD5 , Lake Tarawera

Phone: (07) 362 8278

Email: silver-fox@xtra.co.nz



Climbing Spindleberry

- ≡ Climbing spindleberry has been found on private property and road reserve in Okareka. Why is it a problem? Climbing spindleberry eventually forms a dense blanket of growth which smothers and eventually kills trees and shrubs beneath. It is shade tolerant and is a significant threat to native bush
- ≡ Spread by birds eating berries
- ≡ Classified as a "containment weed" - land owners are legally required to destroy any Climbing spindleberry on their property
- ≡ Controlled by spraying with triclop or stump painting with picloram or glyphosate
- ≡ BOPRC offer assistance with identification and control of this invasive weed
- ≡ Please be on the lookout and call for help if you think you may have seen this weed
- ≡ Contact Colin Bates - Land Management Officer **0800 884 881 ext 7463** for more information





Ian Bowyer - Lawn Mowing, Upholstery & Home Maintenance

I live at Lake Okareka and have been providing services to clients in our community for many years.

I provide lawn care services and I promise you regular and excellent service. I will:

Mow your lawn as often as you want me to
Trim the edges

Fertilise your lawn to keep it in excellent condition

Spray for Onethunga weed (prickles) before summer

Remove garden rubbish from your property
Maintain your hedges and shrubs

Other Services

- Home maintenance - gutter clearing, small building repairs, plastering and painting
- Shade sail design and manufacturing
- Clear PVC curtains
- High quality canvas covers for spa pools and outdoor furniture
- Manufacture and repair of boat and trailer covers
- Torno and Ute covers
- Upholstery
- No Job is too small!

Call me today - my rates are competitive and I am happy to give a quote for any job.

Ian Bowyer 027 376 9482

Vanessa Bowyer 027 372 9860

ian_bowyer@yahoo.com.au

A Snippet of History



Lake Okareka circa 1947—A headland on Lake Okareka with Lake House and other buildings, looking to Lake Okareka settlement, Rotorua District, Bay of Plenty Region. Ref: WA-04788-F. Alexander Turnbull Library, Wellington, New Zealand <https://natlib.govt.nz/records/30665901>

According to “Te Arawa” A History of the Arawa People by DM Stafford, Lake Okareka was settled by Maori in the Taumaihi Pa at the end of the peninsula. The people included those that had sought refuge following battles on Mokoia Island who dispersed to the Okareka and Tikitapu areas. “Okareka” means “the lake of sweet food” in Maori, and the land surrounding the lake was a prime agricultural land for kumara.

Evidently Sir George Grey visited Lake Okareka during his travels through the region over the summer of 1849-1850. A written description of the journey was made by his secretary and a subsequent book published in 1851. His interpreter, Pirikawau translated the account into Maori.

The day of 27 December 1849 was apparently extremely hot when Governor Grey and his group set off on the trail from Rotorua to Tarawera, as it is written

that they were “nearly stewed”. The route from Ohinemutu to Tarawera at that time, skirted the shore of Lake Okareka and reached Tarawera near a mission station called Kariri.

Obviously they were uplifted on arriving at Okareka as the journal accounts:

“We reached the beautiful lake of Okareka, just at a place where there is a spring of deliciously cool water, wherewith we all refreshed ourselves and then proceeded to cross the lake in canoes. The lake is really an extremely pretty sight, the shores being lofty and wooded, with the exception of a valley at each end, where the roads run. A peninsula, on which stands the pa called Taumaihi, juts out into the centre of the lake. The waters are beautifully clear, and very deep. There is no apparent outlet to this lake. Its vent consists of an underground stream, which is hidden for about half a mile, and then makes its appearance, looking like a fountain, gushing through a heap of rocks and square stones of a basaltic formation, whence it makes its way in a small stream to Tarawera, the level of which is about sixty feet lower than that of Okareka, and into which the water falls down a declivity of twenty feet, forming a beautiful cascade, surrounded and overshadowed by a clump of karaka and other evergreen trees.”

We do have some stories and historical information from previous newsletters relating to early settlement and from those who have had family links to the area over many years. We may republish these but would also appreciate additional historical information, stories, legends and photos if anyone would like to share them with us. Please email loca.secretary@gmail.com if you would like to do this.

Activity on the Marginal Strip.



Last month Lake Okareka residents may have noticed a barge operating at the boat ramp and a large skip bin being filled with mysterious items. The Department of Conservation (DOC) engaged a contractor to remove unsafe or unwanted structures on the marginal strip which runs along the lake edge in much of the residential area. Most of the structures removed were old pump sheds and equipment no longer used, generally in very poor condition. Those powered have been disconnected. Smaller items removed included sections of fences, rotten sheds and concrete slabs.

Most adjoining landowners now have formal agreements to keep existing structures on the marginal strip. These include steps, pathways, retaining walls, some fences and garden areas. The key is that they not impede public access and they must be maintained in good condition to ensure public safety. DOC is working with Rotorua Lakes Council to improve the public access ways at Calder and Pryce Roads, with formed steps, hopefully in time for the summer.

Any structures on the marginal strip that appear to impede public access or are a risk to public safety, please contact DOC rotorua@doc.govt.nz to confirm location. The following link will take you to a map programme on the DOC website. <http://maps.doc.govt.nz/mapviewer/index.html?viewer=docmaps>

**DO YOU HAVE A PRESENTABLE AND FURNISHED HOLIDAY HOME
NOT GETTING ENOUGH USE?
AND WANT TO MAKE SOME SERIOUS \$'S?**

THEN CALL NORMAN OF
2LAKES
HOLIDAY RENTALS

FOR AN APPRAISAL TO MANAGE YOUR SHORT TERM RENTAL ON

norman@2lakes.co.nz

PH 07 3628 056, 0274 950 189

www.2lakes.co.nz

bookabach™



holiday houses

For better places to stay

mvpplumbing



Your New Local Plumber

**NZ Certified Plumber
With over 25 years experience
Free Quotes**

**Call Matt on: 021 479 945 or 07 362 8836
572 Spencer Rd, Lake Tarawera, 3076**

Fishing Competition Results

The fishing competition was held on the 7th/8th July.

It was a very successful weekend in some wet and windy conditions with the registration, weigh-in and prize giving held down at the Village Hall for the first time in many years.

Entries: 78 total (21 Juniors)

Fish caught: 79

Trophies

Biggest Fish - Male:

Tony Archer (1.9kg)

Biggest Fish - Female:

Leah Van Boven

(1.65kg)

Biggest Bag:

John Hebert (8 fish)

Biggest Fish - Junior:

Kaira Cox (1.84kg)

Biggest Bag - Junior:

Maddi Batenburg (4 fish)

Best Condition Factor - Junior:

Luke Wilmoth (51.18)

Biggest Bag - Family:

Calder Clan (6 Fish)

Biggest Bag - Team:

Herbert Cox (15 Fish)



Thanks to Tim Bell for sending in the results and the photos





Thompson Marine Ltd

Rotorua's Specialist Mercury Dealer

Sales & Service

All makes & models of
outboard motors
MerCruiser stern drives

Marine Accessories

Including Life Jackets &
Ski Vests
Skis
Marine Electronics, etc

seaboss
ALUMINIUM BOATS

MERCURY
OUTBOARDS

MERCURY
MerCruiser
STERN DRIVES & INBOARDS

We are looking to buy or sell on behalf - good second hand boats.

Guaranteed workmanship from fully qualified marine technicians



31 Fairy Springs Road | PO Box 1337 Rotorua
P : 07 348 4997 or 0800 95 95 90 | F : 07 346 0037 | E : thompsonmarine@seaboss.co.nz

Supplementary Food for Nectar Feeding Birds in Your Neighbourhood

Supplementary feeding can help the survival of our nectar feeding birds especially over the winter months when natural sources of nectar are diminished.

While sugar water is an option a more substantial supplement is this nectar recipe, which was developed and used by a NZ bird sanctuary.

We have been using this recipe for many years and it never fails to attract hordes of Tui, Bellbird, Wax eyes and even the occasional Kereru.

In our Summit Road, Lake Okareka back yard we have had as many as seventy tui at once and regularly have at least 30 to 40 at any one time, especially when it is particularly cold.

It is necessary to regularly clean the bird feeders to prevent disease transmission.

Steve And Yvette Lawrence

Dry Mix

Glucose	2 (400 gm) packets/containers
Complan (plain)	1 (500 gm) packet
Trim Milk powder	1 (400 gm) packet

Combine dry ingredients and store in air-tight container until ready to make nectar.

Tip - store a cupful of dry mix in small snap-lock bags ready to make up. (usually makes about 12 cups of dry mix)

Nectar—Concentrate

1 cup of dry mixture

1 X 1.5 kg bag of sugar

Make up to about 2.5 litres with boiling water.

NB: water must be boiling in order to dissolve the sugar.

Mix thoroughly until all the sugar has dissolved.

Nectar Recipe

Nectar ready to use

This concentrate is diluted 1 part to 2 parts water, more or less.

Pour 330 mls of concentrated nectar into 1 litre, or 660 mls into 2 litre milk bottles and store in fridge or freeze ready to dilute by filling to top with water when required.

This mixture makes enough for about 7 or 8 litres of ready to use nectar.

NB: nectar goes off if out of the fridge – refrigerated nectar starts to go off after about a week so don't make up too much at once – otherwise freeze concentrate until ready to use.



Mexican standoff—Tui vs Waxeye...



...looks like the Tuis won!



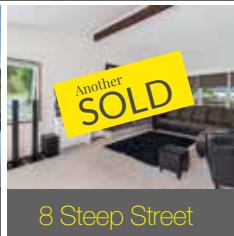
Alfred Hitchcock's "The Tuis"

Ray White Rotorua

Internationally Recognised Award Winning Team

RayWhite

Ray White Rotorua Ltd
Licenced REA (No. 2004)



With an in-depth knowlege and an absolute passion

for our lakes and surrounds, our experienced lake specialists will ensure you get a 10/10 real estate experience when buying or selling at the lake.

Give us a call today.



Tim O'Sullivan
0274 974 986



Norman Donald
0274 950 189



Anita Martelli
027 552 6482



Katherine Martelli
021 213 1541

SUBSCRIPTIONS

If we have not received your annual subscription to LOCA for the 2017 – 2018 year, a red dot will be on the front cover of this newsletter as a gentle reminder.

Our financial year runs from 01 October to 30 September and the December newsletter will contain a request for the 2018 – 2019 year.

Subscription & Donation amount

\$20

Our bank account number for Direct Credit payments is
03 1552 0115767 00

Please include the word “sub” and your name as reference

Or if you prefer to pay by cheque/cash

Lake Okareka Community Association
PO Box 6210
Whakarewarewa
ROTORUA

We do appreciate your support to assist us in our work for the community.



Feel like getting creative?

Do you have an irresistible urge to write on a topic you know lots about?

Please feel free to submit any articles, photos etc. that you think the community would be interested in and I will include them in the next LOCA Newsletter.

**Please contact the editor Murray Walker:
Mobile 021 0821 3250 or email mweltech@gmail.com**



Would you prefer to receive your copy of The Newsletter electronically?

**If so please email:
loca.secretary@gmail.com
to register your interest.**

Lake Okareka and Lake Tarawera Specialist – Jenny Donne



Jenny Donne
Lakes and Residential Consultant

B: 07 349 5356
M: 027 385 0566
E: jenny.donne@bayleys.co.nz

Success Realty Limited, Bayleys,
Licensed under the REA Act 2008

Eight years successfully selling quality Kiwi homes on Rotorua Lakes

Contact Jenny now for a **FREE** Comprehensive Market Appraisal and Marketing Package

Email / text Jenny now if you want to receive **FREE** up to date property sales information

BAYLEYS

Marine Tech Rotorua

13 Summit Road, RD5
Lake Okareka
ROTORUA

Sean Bowyer

021 1766461

07 3628007

marinetechrotorua@gmail.com



Qualified Marine Technician
Sound advice that you can trust

- * Boat Servicing and Repairs
- * Specialist in outboard motor repairs, inboard repairs, marine electrical and Party Pontoon manufacturing

LAKE EVENTS AND CLOSURES

Rotorua Lakes Council (RLC) manages all lake reserve booking for events, working closely with the BOP Regional Council (BOPRC) who manage activity on the lakes. For information on what events are coming up in the area, go to

<http://www.rotorualakes.co.nz/lake-events-and-closures>

or visit

<http://www.rotoruanz.com/visit/whats-on>.

Both RLC and BOPRC appreciate the impact events can have on the location they are held, both positive and negative. If you have feedback that you would like to offer or you wish to discuss events happening in your area, please email the RLC community events team at

Community.Events@rotorualc.nz

or BOPRC at

Jo.Kapua@boprc.govt.nz

Martin Croft

Events Manager

Events & Venues Rotorua

D: 07 351 8654 M: 027 249 8670



MINI SKIPS
ROTORUA

175 Okareka Loop Road
RD5, Rotorua

BRIAN MOORE
Ph: 362 8576
Mobile: 021 741 446

CLASSIFIED ADVERTISEMENTS

Justice of the Peace, available locally, please ring Janine 07 362 8545 or 021 665 464

A Touch of Elegance Beauty and Nails - Phone Vana on 021 074 2070 - Lake Okareka's very own beauty and nail studio, where all treatments are done in a friendly, relaxing and professional setting. Eftpos available.

Looking for one-of-a-kind, affordable, locally made gifts? Colourful Bohemian-style textile art handbags, brooches, cushions are hand made at Okareka by Carol. To view phone 07 3628 878.

Local Builder—34 years' experience, Licensed Building Practitioner: additions, alterations, renovations and maintenance work. Contact Phil Muldoon, Mob. 021 890 508, Hm. 07 362 8874.

Accommodation—Ngamihi Lodge Luxury Bed and Breakfast, 6 Pryce Road Lake Okareka, email: info@ngamihi.co.nz

Free Trailer Hire - when you list and sell your property with Ray White Rotorua. For more information phone 07 348 8333.

Free Home Staging - when you list your property with Ray White Rotorua. For more information phone 07 348 8333.

Super dry fast start kindling—\$10.00 for 1 box or \$25.00 for 3 boxes. Contact Hunter Potter, Ember Enterprise on 07 362 8556 or hunterjpotter@gmail.com.

Babysitter—my name is Lucy Phibbs and I am 16 years old. I am available for babysitting for daytime and evenings. I am enthusiastic and great with kids. Phone: 07 362 8897.

Pet Feeding Services - Pet feeding services over the holiday season and throughout the year, \$7 per visit includes indoor plants watered and mail collected. Limited boarding pens may be available—phone Carol on 07 362 8702.

THOMPSON LAWNMOWERS & CHAINSAWS (2016) LTD

Corner Old Taupo & Sunset Rd, P O Box 10119, Rotorua, info@thompsonmowers.co.nz, P: 07 3484441 F: 07 3492944

- CHAINSAWS
- LAWMOWERS
- REEL MOWERS
- RIDE-ON MOWERS
- LINE TRIMMERS
- SCRUB CUTTERS
- FORESTRY PRUNING EQUIPMENT
- ROTARY HOES
- GENERATORS
- BLOWER/VACS
- WATER BLASTERS & PUMPS
- SPLITTERS & CHIPPERS

**WE SERVICE REPAIR AND SHARPEN
ALL MAKES AND MODELS**

Sales and service of outdoor power equipment.
Rotorua agents for Husqvarna outdoor power equipment
including chainsaws, trimmers, ride-on mowers and more.

Also stock and service - Lawnmaster, Masport and Honda
power products. Briggs & Stratton and Robyn Engines.



UNDER NEW MANAGEMENT

lake tarawera and beyond

bellbird

ARCHITECT

0275380308

mary@bellbirdarchitect.co.nz

www.bellbirdarchitect.co.nz

I am local, experienced, LOVE designing houses with clients and dropped my big fat ego in the lake years ago.
Feel free to pop me a bell anytime to discuss your new build or alterations.

THE LEWIS PLUMBING COMPANY

*Registered Craftsman
Plumbers & Gasfitters*

Ph: (07) 343 9060

57 Tallyho St, Rotorua

jon@lewisplumbing.co.nz

www.lewisplumbing.co.nz