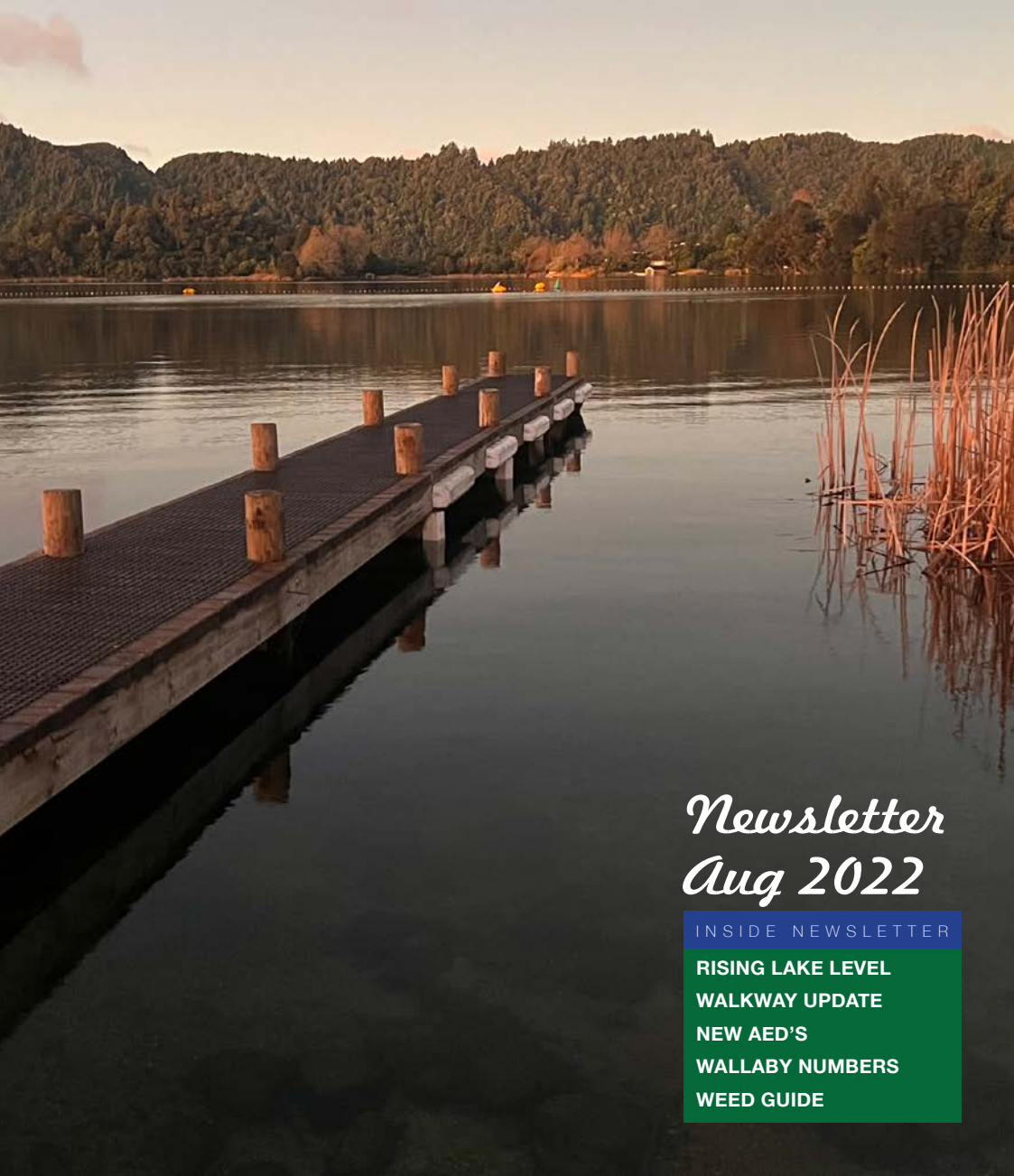


Lake Ōkareka

COMMUNITY ASSOCIATION



Newsletter *Aug 2022*

INSIDE NEWSLETTER

RISING LAKE LEVEL
WALKWAY UPDATE
NEW AED'S
WALLABY NUMBERS
WEED GUIDE

Deadline for copy: 1st of the month of issue

Advertising rates: Quarter page \$50, half \$75, full \$150+gst

Classified adverts: Free for 1st listing/free items (4 lines)

Editor: Michelle Herrick 021 773321 Email runningmichelle77@gmail.com

Website: www.lakeokareka.org

Your Committee:

Kim Lorigan	Chair	021 831 200
Mitch Collins	Secretary	027 574 1456
Stu Wallace	Treasurer	021 665 955

Dennis Falconer	027 596 6942	Tim Bell	021 026 36141
Gregg Brown	029 346 0108	Peter Muys	021 950 279
Colin Jackson	021 306 378	Richard Lang	027 4599 018
Andrew Witters	021 993 940	Cliff Graham	0274 211 489

Disclaimer Statement:

The views & opinions expressed in this newsletter are not necessarily those of the LŌCA Committee.

We're after a new LŌCA Secretary

Please contact the LŌCA team if you are interested. We'd prefer to have a local join our team.
Contact Kim at kim@waipari.co.nz for more information. Thanks

- Fresh organic & spray-free produce, locally sourced where possible
- Huge range of organic dry goods
- Chilled organic & specialty products including Bostock chicken, Tonzu, Hohepa, Cheese Barn, Jersey Girl & more

Shop hours: **Tues-Fri 10-5 • Sat 10-1**

197 Ranolf St (Devon St roundabout shops)

Phone: 07 777 2110 • www.brownowl.nz

Member web orders can be delivered to Okareka



Selling homes, just one of the things we do well!

RayWhite

RAY WHITE CHARITY - We love being part of the community and take great pride in raising funds for deserving charities. Our fortnightly Charity Garage Sales have raised over \$60,000 so far! Call me if you wish to donate any items.

FREE HOME STAGING - A professional service we offer to our vendors. A beautifully staged home can promote buyer visualisation, resulting in more viewers to your property and a higher sale price.

FREE TRAILER USAGE - Our large fully enclosed trailers make moving a breeze and they are free for our clients to use.



Okareka local, Anita Martelli, has a passion for the area, and a passion for Real Estate.

To get the latest information on the changing Real Estate market, or to take advantage of one of the many things we offer, give Anita a call today. She's always happy to help!

Anita Martelli 027 552 6482

anita.martelli@raywhite.com AREINZ

Amtos Realty Services Ltd Licensed (REA 2008)



Chair's Report Winter 2022

What a fabulous lead into winter this year, has been comparatively mild, and warm – this week thought has reminded us of what we would normally expect in winter.

With winter ahead and the shorter days, we experience the slowing down of the camp visitors and requirements for camping services – however the summer provided good custom and we maintained a similar revenue from the camps as last year. On some days they were very busy of course, as the weather made it impossible to resist our beautiful lake.

Our thanks goes to Cliff and Diane and their team of collectors over this busy time, and into the winter. With range of new challenges this year, Cliff has worked closely with DOC, the Police and locals to ensure our visitors are getting the best experience ever. The relationship with these support entities is very important and helpful when we need to call on them. We encourage the use of calling the Police on 105 – to let them know of any behaviour or actions campers and residents are seeing. Reporting in with as much information as possible is the only way to make change to this unacceptable public nuisance behaviour.

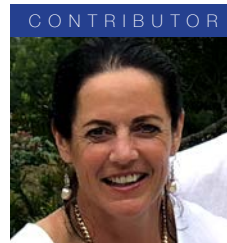
Walking Track Update

As agreed at our AGM, the LōCA committee advised we would come back to the community to ascertain the communities desire to either continue with developing the walking track or not. At the AGM, there was clearly proponents for both positions. The process will be; obtaining community feedback from all community households that wish to participate. That information will be collated and will provide the LōCA committee with the number of supporters or non-supporters on this matter. Further information will be sent out to each Lake Okareka Household with instructions and the process. Please make sure you look out for this in your emails or mailbox.

Pest Work

Our Pest work continues with a very committed push to attending to the Village Pest free areas. Led by Stu, Richard and Tim Bell – we have put together a team of 16 youngsters (Yr6-9) who have zones that they will be looking after for the community. They will be supported by a parent, but you may see them out and about, counting rat/mouse numbers in traps, resetting and recording their findings on the TrapNZ app. As of June 2022, in four weeks they have recorded 20 rats from 60 traps. This will finally give us some data on the numbers of pests in our neighborhood and a benchmark to work to for next year. If you require any further information please contact us, and we are more than happy to set up traps and explain about the programme with you.

Work continues on our Pest Strategy, with a meeting to be held with DOC later this month for support



Kim Lorigan
LōCA - Chair
kim@waipari.co.nz

and approval. The goal is to establish a long-term community plan that can be developed and continued into the future. If we don't begin this larger piece of work now, we will regret it very soon! Already Landcare Ōkareka and Forest and Bird are doing outstanding work with their projects, and this is fully supported by LOCA, including financial support for removal of the bamboo in the wetland area this year. It will also provide for our community the opportunity for locals to be involved in the restoration and protection of our very unique and special environment.

Water Safety

We have caught up with the local Harbourmaster after many concerns this year regarding safety on the water. With the good weather and the increase in watercraft, there certainly was a lot to be aware of. The team did a good job of responding to our local calls of bad behaviour, but we must remember how many lakes they are required to cover. We have agreed to improve the signage in and out of the boat ramp, provide more information regarding speed limits and the 200m mark – but more importantly the message is to always phone through and log your concern 0800 5 KNOTS (0800 55 66 87) to log and get a report underway – it's the best way to effect change.

We are also looking out for the coming review of the water/lakes usage, and will have the chance to submit any ideas, feedback once this comes up for consultation. Please if you have any concerns or ideas, please send them into us or the harbour master.

AED's

4 AED's are now effective in your community – wow aren't we lucky! Thanks to Richard and the RLC Community Fund we have committed to a fourth AED, which is now available at Boyes Beach, in a lockable case. We encourage you to attend the AED training sessions that we are providing alongside our local expert Kieren Oppert. They are fun and provide you with the skills you need to know on how to use these life savers. Even if you think 'they tell you what to do' – there are tips and tricks that provide confidence when using the equipment. Please enrol and get long to one of these sessions as soon as possible. You will be pleased to know that all the committee members



are now trained in AED operation!! I would also encourage you to load the app called Alert – very useful for identifying all AED's and in an emergency, it will identify where you are, exactly, anywhere in the world!!

As you can see there is plenty going on in our community and much more to do. Great to see the Whaka Ama competition here, what an amazing event supporting other paddlers to compete overseas.

Keep us updated on your current contact details and let us know how you would like to be communicated with – we are doing our best to reach as many households as possible.

Keep warm,

Kim

Kim Lorigan
Chair LOCA



COLLAB ELECTRICAL
LAKE TARAWERA + ROTORUA + BEYOND

YOUR LOCAL LAKES SPARKIE

With over 10 years experience

WE SPECIALISE IN RESIDENTIAL AND COMMERCIAL ELECTRICAL

Interested in working with us? Let's collaborate! Give Jamie McIntosh a call or email.

022 173 9048
info@collabelectrical.co.nz

www.collabelectrical.co.nz



**REGISTERED PLUMBERS,
GASFITTERS & DRAINLAYERS**

**PHONE NUMBER: 07 343 9060
57 TALLYHO STREET, ROTORUA**

Rotorua@foleys.co.nz



Forest & Bird
GIVING NATURE A VOICE

This forum is run by Green Drinks and Forest & Bird

'Meet the RLC Mayoral Candidates'

Meet informally, then hear the candidates

answer prepared questions about:

Climate Change, Environmental and Sustainability issues

All welcome. Masks please

5.30pm 23rd August 2022 Netherlands Society Hall, Neil Hunt Park

GreenDrinks
Rotorua



Lake Ōkāreka Volunteer Rural Fire

Despite the cool and wet weather over recent months, the Lake Ōkāreka Fire Brigade has been kept fairly busy attending a number of call-outs for fallen trees and vegetation, car and structure fires, with the latest incident occurring in the bush near the Blue Lake.

Back in April, a late afternoon slash burn in strong winds and gusty conditions resulted in trees next to a shelter belt in Paengaroa catching on fire, with a significant crop of kiwifruit on the other side. The Lake Ōkāreka Fire Brigade were called to this incident because of difficult access and having a 4x4 appliance. Crews worked throughout the night to bring the fire under control.

Unfortunately, the brigade also attended a structure fire at Lake Tarawera and, despite the best efforts of all involved, the house was lost. This highlights the speed at which fire can take hold and the importance of having escape routes and everyone exiting a property immediately. While the loss of property is devastating, it was a relief that the occupants were safe. Nonetheless, we feel for the family and wish them well as they work through the aftermath of this sad and traumatic event.



Lake Tarawera fire: stopping the spread of fire to a neighbouring property



Lake Ōkāreka crews at the Paengaroa fire in extreme conditions



Phil Muldoon
Chief Fire Officer
pmh.ltd@xtra.co.nz



Hosting the Keas at the Lake Ōkāreka Fire Station



Young Keas: Future firefighters?

The Lake Ōkāreka Fire Brigade also recently hosted a group of Keas at the station. The weather wasn't very obliging on the day to enable more practical activities to take place for our young guests. However, they listened attentively to our talks, asked and answered some great questions, and enjoyed climbing into the fire appliance.

Finally, with the frosty nights and wintery weather, please make sure your chimneys have been swept if they are being used frequently and haven't been cleaned out for a while. Also, please be aware of the weather conditions and take care when the roads are icy or wet.

It has been great having our university student members back on board over the last few weeks. However, they are now going back to commence study for the next semester. We have also been fortunate to have had a few new members join the brigade over the last few months which helps to keep numbers up, particularly during the year. On-station induction and training has been in full swing with various formal FENZ training courses also taking place.

If you live locally and would like to join the brigade, then please drop by the station on a Wednesday evening at 7:30pm or give me a call on 021 890 508. You can also visit our website for more information: <http://www.Ōkārekaruralfire.co.nz/>

Phil

Phil Muldoon

Chief Fire Officer

Wallaby Programme UPDATE

We will be sending out updates a couple of times a year with the progress being made in locating populations of dama wallaby and controlling their numbers. In the interim find out more about wallabies below and what is being done to control them.

An unwanted invader

Watch this five minute video highlighting the cultural, ecological and economic impacts that wallabies have and to encourage people to report sightings.



The Programme strategy

The current focus is find and eradicate all populations outside a defined 'containment area'. The long term goal is to eradicate wallabies from the Bay of Plenty and Waikato regions.

Dama wallabies were first released near Lake Ōkāreka in 1912. Since then they have been steadily expanding their distribution. It is estimated that if no control work is undertaken, a third of the North Island could be impacted by the spread of wallabies within 50 years.



Why wallabies are an issue

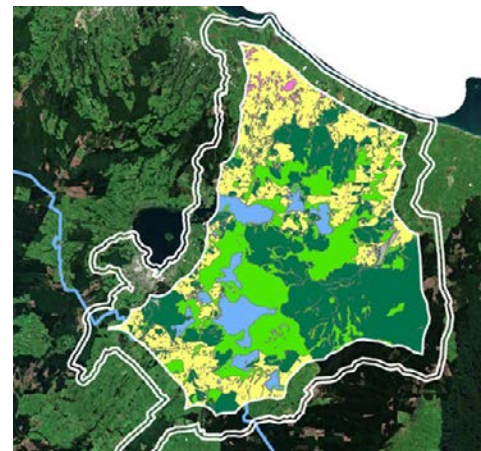
Wallabies have a huge appetite for many of our native seedlings, shrubs, ferns and grasses which prevents their regeneration, changing the structure of our forests and reducing their ability to support our native birds and other wildlife.

Wallabies love pasture grasses, which means they compete with livestock for food.

As wallabies are nocturnal and cautious, they can be hard to find. The Bennett's wallaby, found in South Canterbury and spreading into Otago, is also threatening native ecosystems, farms and forests.

If both species are not controlled, wallabies could spread across one third of both the North Island and South Islands over the next 50 years and could New Zealand's \$84 million a year by 2025 (includes lost farm production and ecosystem services).

In 2020 as part of the 'Jobs for Nature' funding, \$27m was allocated over a four year period to



Defined containment area with 'buffer zone'.

control wallabies in New Zealand. This control is for Bennett's wallabies in the South Island and dama wallabies in the North Island. Administered by Biosecurity NZ (MPI), the four year funding will be delivered through partnerships with regional councils, Department of Conservation, Iwi, landowners and the community.



Satellite populations currently under surveillance, in red, and control, in yellow.

Dama wallaby control strategy

The first steps in the dama wallaby control strategy is called progressive containment. Progressive containment involves stopping the further spread of wallabies by finding and eradicating all satellite populations outside the

defined 'containment area', and controlling wallabies within the containment 'buffer zone'. Once this has been achieved we will begin strategically targeting wallaby populations to reduce the size of the containment area and investigate the possibilities of eradicating wallabies from the central North Island. The below map shows the current containment area and the buffer zone, which has been identified as the area where priority will be given.

Current operations: Dama wallaby control

Current activity in year one of the programme is focused on surveillance and control of 'satellite' populations in areas where wallabies are believed to be dispersing from. Contractors, with specially trained wallaby indicator dogs and trail cameras, are being used to locate and determine the extent of dama wallaby populations. Where wallaby populations exist outside of the containment area, councils will work with the landowners to plan and deliver wallaby control (currently at no cost to landowners). Landowners/managers located within the containment areas are advised to contact their council Biosecurity staff for advice on wallaby control options to suit their situation. Wallaby-proof fencing is being installed at various points around the containment area to reduce the potential 'leakage' of wallabies in areas where no natural barriers, such as rivers, exist.

Got a question?

If you would like to find out more about this project please contact Monica Quirke, Dama wallaby Engagement Co-ordinator by completing the form below, click 'Follow Project' on this page or email Monica.Quirke@boprc.govt.nz

Why do we need to remove wallabies they do not look like a pest?

Wallabies are relatively cute looking but looks can be deceptive. With a huge appetite for many seedlings and shrubs they can change the structure of native bush. This then impacts on native birds and animals seeking food and

shelter. Wallabies also eat grass, which means they compete with livestock for food and impact on farm production.

Can a wallaby be kept as a pet?

No. There have been cases where wallabies have been moved between different regions and as a result new satellite populations have become established. Though appealing as a joey when they mature, they need space to move around, get boisterous and are very hard to contain. Wallabies are classified as an unwanted organism in the Biosecurity Act and moving of any live wallaby is an offence unless a specific permission has been granted by MPI. Holding or keeping a live wallaby is also a breach of regional pest management plan rules, which may result in prosecution.

Why should wallaby sightings be reported?

Wallabies can move and disperse quickly. Reporting any sighting of a wallaby allows

surveillance to be undertaken as soon as possible. This is particularly important when wallabies are identified outside of the containment zone and in areas, they should not be in. We do not want them to invade further.

Timely reporting will give us the best chance of finding the wallaby before it moves further.

How can the community help?

The single most important action that anyone in the community can do to help is to report any sightings to www.reportwallabies.nz

Watch this video about the wallabies.

<https://youtu.be/hbQ6IKr7leo>



Rich Lang
LōCA - Member
Serving Police Officer
0274 599 018

What's the best way or what's the best number to contact Police on?

It is important when members of the community see something, that they obtain as much detail as possible. Including date, time and accurate location. If at all possible and you are able to do so safely, photographs or videos of the offending are invaluable.

But you must remember, your safety is paramount.



Call 111 if

- There is a fire of any sort
- You need an ambulance because someone is seriously hurt
- Someone is breaking into your house right now
- There is car accident where people might be hurt, or cars are blocking the road
- Someone has been assaulted and the offender is still there
- You are afraid for your safety and or for those around you
- You need an emergency Police response

When to use 105

We encourage you to make a report online at 105.police.govt.nz, but you can also call us 24/7 on 105. Use 105 to report things like:

- Your car or bike has been stolen
- Someone has vandalised your wall
- You've lost your wallet or phone, or your handbag was stolen at the library
- Someone broke into your car and might have taken something
- You're a retailer and someone has shoplifted or driven off without paying for gas.
- You suspect a scam or drug dealing
- Your house has been burgled (if you think the burglar may still be in your home, or running down the street, do not go inside - contact Police immediately by calling 111)

Lake Events And Closures

Partial or full Lake closures for events are now managed by Rotorua Te Arawa Lakes Strategy Group. They are an overarching team responsible for management of the Rotorua Te Arawa lakes. They are made up of elected representatives from Bay of Plenty Regional Council, Te Arawa Lakes Trust and Rotorua Lakes Council, with support from the Ministry for the Environment.

There is a form on their website to complete if an event requires a full or partial lake closure. <https://www.rotorualakes.co.nz/full-or-partial-lake-closure-form>

Also on the page is reference to the Bay of Plenty Regional Navigation Safety Bylaw.

It is important that you have supplied all of the required information BEFORE submitting the application. There is a 'pre-submit checklist' accompanying the electronic form.

Applications must be submitted no later than four weeks prior to the event date or the application may be refused.

If you have any questions about the Rotorua Te Arawa Lakes Program email rotorualakes@boprc.govt.nz

Tikitapu Pest Control Project

Several volunteer work days to prepare for the 2022 toxin operation have been undertaken in the last couple of months. Twenty volunteers (some attending on several occasions) put in an estimated 120 hours checking bait stations, clearing access along bait lines and monitoring lines, and remarking the routes where necessary.

In addition to these work days a small, dedicated team have been diligently dealing throughout the year with windfalls, and working on eradication of some of the invasive weeds. Cherry trees and saplings have been a particular target.

We are really pleased that bat monitoring has continued in the reserve and that new insights into bat behaviour and habitat preferences are being identified. The traps that are deployed around the perimeter of the managed area are checked twice monthly throughout the year and have yielded the following results:

Catches for the five months
January to May 2022:

Rats	105
Possums	66
Mice	26
Hedgehogs	22

A further line of traps has been installed within the reserve. We thank those who have constructed the trap boxes and who installed the traps in late July.



Possum

Margaret Dick
Forest & Bird
0274202022

BOPRC have developed a digital app to record trap catches and bait station information for the pest control operations throughout the region. Tikitapu data is now being entered into the app which promises to make analysis of data easier. Results and information from all the different groups that work on predator control will provide an overview and information on what works best. There is potential for invasive weed information and control efforts to be included in the future.

The toxin programme using Pindone pellets, and possibly Bio Bags containing Feratox®, is scheduled to begin at the end of July 2022. Pre-operation monitoring for rats and marsupials will take place in mid-July; post-operation monitoring in mid September.

Work days are:

31 July and 1 August:	Toxin will go into bait stations
14 and 15 August:	Top up of toxin in bait stations
28 and 29 August:	Removal of any remaining bait

Volunteers are asked to please book with Frances Blakely, jandfblakely@gmail.com Our thanks to all the volunteers who, in many and varied ways, contribute to the success of this project.

Margaret

Margaret Dick
Rotorua.branch@forestandbird.org.nz



MERCURY **Thompson Marine** **HONDA MARINE**
The Home of Seaboss

**Servicing and Parts On All Makes and Models of
Outboard Motors & Mercruiser Stern Drives
Full Range of Boating Accessories**

31 Fairy Springs Road Rotorua Ph 07 348 4997 or 0800 95 95 90
thompsonmarine@seaboss.co.nz www.seaboss.co.nz

USED BOATS WANTED



Lake Ōkareka Preschool News



Term 3 July 2022

Welcome to Megan Clarke joining the teaching team with Leslie and Davina. She has settled in well and is getting to know all our tamariki and whānau along with exploring our wonderful community on our many walks. We also welcome Orla Forsman starting preschool joining big brother Zeke with whānau Gina and Jamie, Happy preschool days

Last term we celebrated Samoan language week exploring many different aspects dressing up in lavalavas, learning a new song Savalivali and watched some traditional Samoan dancing and tried siapo art with geometric shapes.

Then we celebrated Matariki with a focus of learning the names of the nine stars, this was fun with the Matariki Macarena. We weeded our garden and planted new seedlings. Remembered our loved ones and fur babies who have passed and enjoyed a lovely hakari feast of warm smooth or chunky vegetable soup to fill our pukus.



Megan, Davina & Leslie
Preschool Teachers
Phone 07-362 8606

We have had lots of walks out in our community and enjoyed playing in the rain

The end of term we had a pyjama day that was so nice to come to Preschool in our warm fluffy Pj's and, dressing gowns and slippers.

If you have any messages for Preschool, please phone 362 8606 or email office@lakeŌkarekapreschool.co.nz

Like us on Facebook and see what other adventures we have been up to.

Leslie, Davina and Megan

Teaching Team Leslie, Davina and Megan



Merlin Sheffield
Registered Electrician, Rotorua

P (07) 362 8572
E merlsetelectrical@gmail.com

**MERLIN'S
ELECTRICAL LTD**

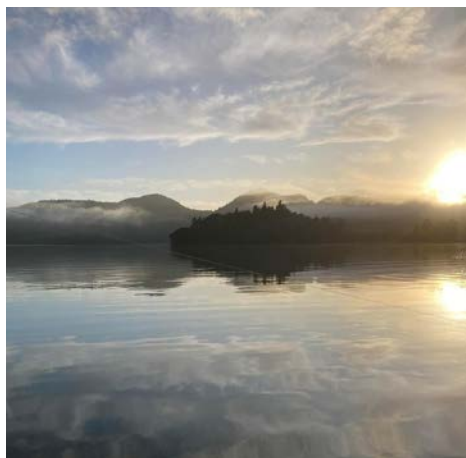


Tim Bell
LōCA Historian
tsbell.nz@gmail.com

2022 Winter Fishing Competition

The annual Laka Ōkāreka Winter Fishing Comp was held on Saturday the 30th of July. Weather forecasts were not looking good leading up to the day but the fishing gods took pity on us, and the morning emerged with stunning blue skies and barely a ripple on the lake.

Entry numbers were down again with 49 anglers, 13 of those as juniors. It was slim pickings for a lot of boats with plenty of stories of lost fish and a number of undersized catches returned to the lake. 45 fish were weighed in at the end of the day and every one that turned up to the Village Hall for the prize giving had a smile on their face after a day well spent admiring this beautiful place we call home.



Congratulations to the prize winners for 2022:

Biggest Fish Mens - Eben Herbet (1.86kg)

Biggest Fish Womens - Jordana Leerson (1.33 kg)

Biggest Fish Jnr - Eamon Herbert (1.39 kg)

Biggest Bag Team - Team NEF (7 fish)

Biggest Bag Family - Herbert (9 fish)

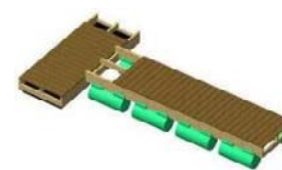
Biggest Bag Jnr - JT Royal (1.97 kg)

Biggest Bag Individual - Eben Herbert (5)

Best Condition Factor Jnr - Abbie Garden (41.61)

PONTŌONZ

Floating Solutions



Pontoon & Houseboats, Jetties, Swim/picnic rafts, Floating Docks / Walkways, Work barges, Aquaculture platforms, Dive, Fishing and Hunting Rafts, Irrigation & Pump barges, Boating for the disabled Ideal for the Lake.

Build as long & as wide as you want



pontoonz.co.nz pontoonz@gmail.com

Ph. (+64) 027 555 2000

Winter Boat Maintenance & Staying Safe on the Water

Boats in general do not like just sitting around over winter. The cold and moisture plus lack of use can play havoc with boating systems and onboard equipment.

Trailers, brakes, bilge pumps, lights, deck wash pumps, winches and of course engines all will thank you for a regular winter check and some running. Most of maintenance issues tend to arise after the boat has been stored and left, so take some time to run everything up each month and ideally charge the batteries every few weeks. It will cost you much less in the long run and ensure you get a good safe start to spring/summer boating.

Remember if you are heading out for a fish or a cruise this time of year the weather is cold and can deteriorate very quickly so let someone know where you are going, ensure everyone has a



Roly Bagshaw
**Senior Maritime
Officer**
0800 884 880

properly fitting life jacket, and take two forms of communication (just in case the unexpected happens!)

While our Maritime patrols are not as active this time of year you may still see us on the water. Monthly water monitoring, lake structures compliance, navigation aid maintenance are just a few of the tasks we have on over winter plus of course chasing the odd escapee kayak or floating island!

Finally, if you see anything out of place or not as it should be around any of the lakes, please let us know by phoning 0800 5knots.

Roly

Roly Bagshaw
Senior Maritime Officer (Lakes)
Bay of Plenty Regional Council



*Go online to check out
the rules with Rollie!*
www.boprc.govt.nz/know-the-rules




HARBOURMASTER TEAM

We are proud to care for Rotorua's pets!

**Barrowman Goodman
Vets is where you will find:**

- Top diagnostic equipment
- Full range of surgical and medical treatment
- Latest interactive veterinary software and most all
- Most importantly top staff!
- Raw feeding plans and food

Barrowman Goodman Vets
110 Lake Road Rotorua
Phone 07 343 9090



June, July and August -

Our WINTER SALE is on NOW!

BOAT SERVICING - 15% OFF LABOUR
Book your boat or Jetski in for service from June to August and we will discount the labour 15%
Sweet right?

FREE PICK UP AND DELIVERY
FREE TRAVEL FOR ONSITE SERVICING

Don't forget your trailer - now is the time to get it ready for next summer. Ask us about **CORROSION X** application.

10% OFF SOUNDER & GPS PACKAGES
when you purchase and book the install with us

Thinking of repowering - now is the time to talk deals!
Call us on 07 345 9854

YAMAHA GENUINE Parts & Accessories
YMF YAMAHA MOTOR FINANCE
YAMALUBE
YMI YAMAHA MOTOR INSURANCE

Enjoy your boat next summer - don't have it stuck in the shop getting repaired



The sun rises over or sets behind the Kaimai Mamaku forest and ranges. This constant and reassuring backdrop is a taonga. A treasured place.

It is a connector of two regions, multiple iwi, hapū, conservation and recreation groups, and livelihoods. When you take a glance, the forest looks fine. But if you look closer, this precious natural infrastructure is struggling.

The Manaaki Kaimai Mamaku Trust brings together kaitiaki, stakeholders and interest groups to improve the health of the Kaimai Mamaku to provide for present and future generations.

Wednesday 3rd August, Louise Saunders, CEO will speak about MKM at a Forest & Bird Meeting, Netherlands, Society Hall, Neil Hunt Park, Rotorua 7.30 All welcome.

THOMPSON LAWNMOWERS & CHAINSAWS
(2016) LTD

Corner Old Taupo & Sunset Rd, P O Box 10119, Rotorua, info@thompsonmowers.co.nz, P: 07 3484441

- CHAINSAWS
- LAWNMOWERS
- RIDE-ON MOWERS
- LINE TRIMMERS
- SCRUB CUTTERS
- ROTARY HOES
- GENERATORS
- BLOWER/VACS
- SPLITTERS & CHIPPERS
- BATTERY POWERED EQUIPMENT

Sales and service of outdoor power equipment. Rotorua agents for Husqvarna outdoor power equipment including chainsaws, trimmers, ride-on mowers and more.

WE SERVICE, REPAIR AND SHARPEN ALL MAKES AND MODELS.

Husqvarna
READY WHEN YOU ARE

Crack Willow

What does it look like?

Deciduous tree (<25 m), occasionally only shrub size, with spreading rather than hanging branches, and rough and fissured bark. Roots sucker and rootlets are bright red when in or near water. Dark or brownish green shoots are not slender, and snap with a loud crack when bent. Bud scales are shiny and dark brown. Shoots and leaves are silky when young but become hairless as they mature. Lance-shaped leaves with tiny serrations are bluish underneath and the upper surface is shiny and often covered with bright red galls. Narrow downward curving catkins (40-75 mm long) appear at the same time or after the leaves, from September to October. As there are only male plants in New Zealand, no fruit is formed.

What damage does it do?

Replaces native species in riparian sites and forms vast dense (often pure) stands along channels. Causes blockages, flooding and structural changes in waterways.

What can I do to get rid of it?

Begin control at top of catchment, treat every stem. Cut and squirt (summer-autumn) or bore and fill: Make 1 cut or hole every 100 mm around the trunk and saturate each cut or hole with 10ml glyphosate (undiluted).

What can I do to stop it coming back?

Almost all cut stems root where they fall. Cut stumps regrow rapidly. Do not fell unless all plant material can be disposed of at a refuse transfer station or by burning. Best to poison while standing to avoid live stem contact with ground.



Taiwan Cherry

Also known as

Bell-flowered cherry, Formosan cherry

What does it look like?

Small deciduous tree (< 8 m tall) with a short trunk and narrowly spreading branches (branches nearly vertical when young). Thin leaves are rounded at base, broadly elliptic with sharp point at tip (<17 mm long x 9 cm wide), and small teeth along entire leaf margin. Main veins on leaf are obvious and both surfaces are hairless. Leaf stalk 12-20 mm long. Bell-shaped flowers are magenta or pink to deep red, hang in clusters of 1-5 (Jul-Sept) and are followed by glossy scarlet cherries (<12 x 10 mm).

What damage does it do?

Forms dense stands in open or disturbed habitats preventing regeneration.

What can I do to get rid of it?

Pull (all year round): pull out seedlings and small plants. Mulch. Cut and stump treat (all year round): paint freshly cut stump with metsulfuron-methyl 600g/kg (5g/L) or a product containing 100g picloram+300g triclopyr/L (100ml/L). Mulch cut branches and leaves.

What can I do to stop it coming back?

Monitor the site for recolonisation or growth for seed bank for two years. Plant a dense cover of native trees or shrubs to produce shade. If possible, track down and remove the seed source.



Brush Wattle

Also known as

Shrub wattle, Acacia lophantha, Albizia lophantha

What does it look like?

Short-lived tree (<5-10 m) with densely hairy ribbed twigs and bronze, hairy young shoots. Alternate frond-like leaves (20-30 cm) are twice divided along the midribs with 8-15 pairs of main subdivisions and 20-40 pairs of linear leaflets which are silky underneath. Tiny, numerous, green-yellow flowers in flowerheads (5 x 5-10 cm, May-Aug) resembling a bottlebrush are followed by flat, green to brown seed pods (8-15 cm) containing foul-smelling seeds.

What damage does it do?

Tall, rapidly establishing stands overtop low-growing vegetation, but native forest species establish under wattle so impacts are usually confined to open and low-growing vegetation types.

What can I do to get rid of it?

Only control where wattle is a recent threat, of low incidence or poses a high ecological threat. Hand pull or dig small plants (all year round). Ensure minimum soil disturbance. Cut and squirt trees (all year round): Make 1 cut every 100 mm around the trunk and saturate each cut with 5ml triclopyr 600 EC (undiluted).

What can I do to stop it coming back?

Stumps regrow. Reseeds following disturbance by fire, machinery or non-selective spraying. Do not merely fell, as wattle recovers faster than native species and the higher light levels induce more seed germination. Clear all roads, metal dumps, quarries and other sources.



Strawberry Dogwood

Also known as

Himalayan strawberry, strawberry tree

What does it look like?

Small, rounded evergreen tree (up to 6-12 m tall) with hairy branches when young that become hairless, and paired leaves (up to 10 cm long) on short stalks that are paler green underneath and have with prominent veins. Numerous pale yellow flowers consisting of four large petal-like bracts develop in January to February and are followed by almost round fruit (2-4 cm diameter) composed of 30 or 40 pink, fused, roughly six-sided fruits that ripen to red in March to April.

What damage does it do?

Forms dense thickets in grasslands which crowd out desired grasses, sedges and herbs, and alter wildlife habitat. Shades and crowds out understorey species in tall open forest.

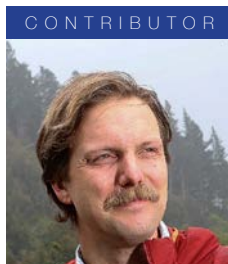
What can I do to get rid of it?

Hand pull seedlings (all year round). Cut stems at ground level (spring after bud break and again in summer): repeated treatment may be required. Stump swab (spring-summer): cut stems and swab fresh cut with glyphosate (100-200ml/L).

What can I do to stop it coming back?

Monitor the site and treat any regrowth from the root system or seedlings. Where appropriate plant a local native shrub or tree.





Mitch Collins
LōCA - Secretary
loca.secretary@gmail.com

Wasps at Lake Ōkāreka!

This summer just been has been particularly warm and dry. Some of you may have noticed the scourge of wasps came in one big hit around Easter. It was particularly bad for us as we lost both hives to invasion and robbing by wasps. We had wintered them down and protected the entrances before leaving on a short holiday and they got destroyed.

Losing a hive is like losing a pet. It sucks. The girls do such a good job pollinating everything in our local food bowl and we couldn't help them.

Are wasps a real problem?

Yes, they are increasingly becoming more of a pest. Frosts used to cull the population. However, with fewer frost days due to climate change, the populations are surviving the winter and expanding each season. Many bush areas are overrun with wasps - particularly over in Tarawera. They tend to fly no further than several hundred metres from their nests (typically underground). Wasps congregate often around ivy in early Autumn and the pheromones from willow also attract them - bringing them to the shore near bathers (a good reason to reduce these weeds).

How can you help prevent wasps?

LōCA has a license for baiting wasps with a poison known as VESPEX. The active ingredient within Vespex is fipronil (similar to flea treatment) which the wasp takes back to its nest. For best results, this is best used when wasps are seeking protein (late January, early February). Before they are noticed in numbers and seeking sugars in late March.



If you can track a wasp back to its nest, we have beekeepers (in suits) that can help poison the nest with powder. The old method of petrol and a match isn't well-advised.

Be sure to know the difference between a wasp and a bee and keep an eye out for any appearances. If we can manage populations, summers will be much more enjoyable.



Bee




Wasp






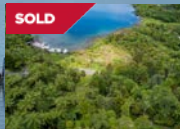


Get in touch with loca.secretary@gmail.com if you see any wasps about. Particularly over the Christmas holidays.

Mitch

Mitch Collins

ALL OVER THE LAKES



Jenny Donne - Lakes Specialist

I am experiencing a high rate of buyer enquiry at the moment so if you are thinking of coming to the market please give me a call. The Lakes market has been my specialty for over 11 years which gives me a wealth of knowledge of the local community plus being backed by the Bayleys brand with strong national and international links gives your property a leading edge in today's market.

Thinking of coming to the market? Call me today for a free, no obligation, confidential appraisal.

Jenny Donne Lakes and Residential Sales
P 07 349 5356 | M 027 385 0566 | E jenny.donne@bayleys.co.nz

ALTOGETHER BETTER

Residential / Commercial / Rural / Property Services

Landcare Ōkareka Winter 2022

Landcare Ōkareka volunteers have continued with various projects over summer, autumn and into winter. On going weed control work around the catchment has been carried out, especially spotting wilding cherries in autumn, along with any patches of Spindleberry and Old Man's Beard in Tikitapu SR. Pest trapping is ongoing in the esplanade and other areas. Data from that work is now being entered into the Bay of Plenty Regional Council trapping app. Areas have been site prepped for winter planting.

Millar Road / Boys beach wetland:

Landcare Ōkareka volunteers have undertaken many hours of weed pest removal amongst the plantings from 2020 and 2021, to keep the new plants growing well. Plants all put on a great spurt of growth with the autumn when we got some rain and the ground was warm. Further site preparation work has happened, getting areas ready for planting this coming winter in the area.

Following successful applications for funding to carry out the project, Landcare Ōkareka volunteers have made a start on the bamboo removal project in the wetland area adjacent to the roadway into Te Waiariki Pūrea Trust's recreation shed. Rotorua Trust, Bay of Plenty Regional Council and Lake Ōkareka Community Assn have all granted funding to get this project done. Once all of the bamboo in the first section has been cut down and stacked by Landcare Ōkareka volunteers, this project will require some contractors and machinery to complete mulching and removal of bamboo chippings, along with digger to remove bamboo roots from the site. The area is broken into 2 parts in order to get this work carried out successfully. Once bamboo is removed completely the area will be reinstated and planted in suitable vegetation.

The Millar Road wetland area had a scheduled visit from Landcare Research scientists this summer under the Bay of Plenty Regional Council's regional wetland monitoring programme. Landcare Ōkareka volunteers were involved with assisting these scientists with locating the monitoring sites and carrying out their work. The work has not been fully completed and more will be done in the coming spring or early summer, before a report is prepared.

Animal Pest Trapping:

The team of Landcare Ōkareka volunteers continued to check and re-bait the traps along the various trapping lines around the edge of Lake Ōkareka and in the Millar Road wetlands on a regular basis. We are deploying Sentinel traps for possums in some parts. As per usual we ask parents and children to take a responsible attitude towards traps if you should notice them. Do not touch or poke anything in to the traps. They are there for a purpose. And a huge thank you to everyone who is helping with this project.



Sandra Goodwin
Landcare Ōkareka
slgoodwin.nz@gmail.com

Long Tailed Bat Monitoring:

This monitoring project continued over summer and into autumn. Monitors were brought back in once bat activity slowed right down. Some of these have been on private land and we thank those land owners who have been so supportive of this monitoring work. Following many hours of analysis of this last year's recordings by local volunteers, reports have been prepared and presented to DOC along with the data for the National Bat Recovery data base. Long tailed bats continue to have a significant presence in places at times, within the Lake Ōkareka catchment.

Rat Bait Available:

Ditrac rat bait for bait stations is still available. This is funded by Bay of Plenty Regional Council. If you require bait for your bait station please contact either Rod Stace 362 8523 or Mike & Sandra Goodwin 362 8865 to arrange a time to collect.



Rat bait available

Litter and Rubbish Collection:

A huge thank you to those caring local people who have been undertaking recent litter and rubbish collection around Lake Ōkareka roads and reserve areas. Your efforts are really appreciated.

Working Bees:

Please watch out for the Landcare Ōkareka Working Bee signs over the next few months, when we begin planting again. We welcome anyone who would like to come and lend a hand. Lake Ōkareka and its public conservation environment would look nothing like it does without all of the hard work of the Landcare Ōkareka volunteers over the years, since 2003. Thank you to everyone who has helped over the last 12 months or so.

Watch out for the Landcare Ōkareka signboards which announce each working bee. Or contact me if you would like to be added to the email list of volunteers.

Sandra

Sandra Goodwin
Landcare Ōkareka

DOC Update for Winter 2022

The DOC team want to take this opportunity to acknowledge the immense commitment of all the people involved in the Tikitapu Pest Control project.

This year marks 20 years of plant and animal pest control in the reserve to protect the two species of rare native mistletoe that are present, *Ileostylus micranthus* and *Tupeia antarctica*, to encourage regeneration of the bush and an increase in the bird life. The latest mistletoe survey in 2016 found 2034 plants compared to the 218 counted in 2001 before pest control commenced. While possums are the primary target pest for the mistletoe, rat control has resulted in a noticeable increase in the bird life in the area and the bush is showing sure signs of regeneration. This project is a successful collaboration led by Rotorua Forest and Bird Care group with Rotorua Botanical Society, Bay of Plenty Regional Council, and the Department of Conservation. Thousands of volunteer hours have gone into this project over the years and the results speak for themselves.

Start planning now for Conservation Week 5th- 11th September 2022. Contact the local DOC office rotorua@doc.govt.nz to talk through your ideas, and promotion or support for any activity or event.

Thank you

Carrie

Carrie
DOC- Rotorua



Forest and Bird and KCC members planting opposite Benn Road.



Carrie Abbott (Bsc)
DOC - Rotorua
0272737695

Predator Free Ōkareka

The Back Yard trapping crew have been out in force over a 6 week period leading up to the July school holidays. Stu Wallace organised a large group of local kids and divided them up into groups to cover traps in our area. New traps were installed, old traps were searched for and a number of people were added to the LōCA Back yard trapping project.

The awesome group of kids were briefed by Stu, Tim and Rich over pizza one Sunday evening. Their brief was simple: Over the following 6 weeks check the traps in their area twice a week, record any rats (or other species) caught on the TrapNZ app. This was to give us an idea of the numbers of pests in our area over the 6 week period.

As a result the kids caught in excess of 30 rats, and a couple of other pests. The kids had a great time, there was a bit of competition between the teams, seems as though the girls were keen to get their first catch, but the Summit crew seemed to bag the highest catch rate.

After the first phase, Stu organised a night of bowling and pizzas for the kids.

Stu has come up with revised groups of kids now tasked to check on the traps weekly. More traps are in the pipeline, with a plan to put more and more traps in our community with the view of reducing the pest population drastically.

If you or your children/family want to be involved, sing out to Rich 027 4599 018 or Stu 021 665 955 and we can slot you into a team or set you up assisting in other areas.

TrapNZ: The results are being recorded on Trap NZ an app can be downloaded for both Android and Apple. We have a local project called LōCA backyard trapping download the app, register on the web page send a request though to the team, and once you are a member of the project you can locate and record results of any trap you check from your mobile device.

Website: <https://www.trap.nz>, You can also download the app. Search TrapNZ

Get out there, check traps, have fun & lets rid this community of as may pests as possible!



Rich Lang
LōCA - Member
Serving Police Officer
0274 599 018



Classified Advertisements

Justice of the Peace: available locally, please ring Janine 07 362 8545 or 021 665 464

Experienced Gardener: Garden maintenance and improvements. Helping to bring beauty to outdoor spaces naturally. Verbal references on request. Please contact thegardenkeepernz@gmail.com or 0276435927

Free Home Staging: when you list your property with Ray White Rotorua. For more information phone 07 348 8333.

Accommodation: Ngamihi Lodge Luxury Bed and Breakfast, 6 Pryce Road Lake Ōkāreka, email: info@ngamihi.co.nz

Free Trailer Hire: when you list and sell your property with Ray White Rotorua. For more information phone 07 348 8333.

Ian Bowyer: Lawn mowing, upholstery and home maintenance, phone Ian 027 376 9482

A Touch of Elegance Beauty and Nails:
Phone Vana on 021 074 2070 - Lake Ōkāreka's
very own beauty and nail studio, where all
treatments are done in a friendly, relaxing and
professional setting. Eftpos available.

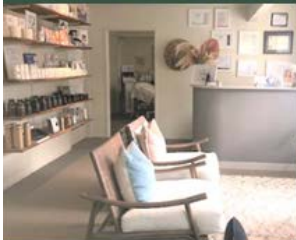
Looking for one-of-a-kind, affordable, locally made gifts? Colourful Bohemian-style textile art handbags, brooches, cushions are hand made at Ōkāreka by Carol. To view phone 07 3628 878.

Pet Feeding Services: Pet feeding services over the holiday season and throughout the year, \$7 per visit includes indoor plants watered and mail collected. Limited boarding pens may be available - phone Carol on 07 362 8702.

Customised Facials, Oncology Aesthetics,
Medical Microneedling, Celluma Pro LED, Gua
Sha. Treating Acne, Rosacea, Psoriasis,
eczema, scarring, anti-ageing, and general skin
health



Studio
Eleven
NUTRITIONAL SKINCARE CLINIC



*Awarded NZ Most
Promising Skin Therapist
2021*

*Runner Up dermaviduals
Australasia for Skin
Barrier Conditions*



Kate Hudson—Corneotherapist
11 Calder Road, Lake Okareka
studio-eleven.co.nz
kate.studioeleven@gmail.com