



THE NEWSLETTER

**Lake Okareka
Community Association (Inc.)**

**July, August and September 2014
www.lakeokareka.org**

The Newsletter

of the

Lake Okareka Community Association (LOCA)

Issue 3, September 2014

Issue dates: 20 March, 20 June, 20 September, 20 December

Copies printed: 300

Deadline for copy: 1st of the month of issue

Advertising rates per issue: Quarter page \$25, half \$40, full \$70

Classified adverts: Free for 1st listing/free items (4 lines)

Editor: Maria Haines—phone: 3628 960 email: mariaanddean@xtra.co.nz

Your Committee:

Geoff Palmer	Chairman	3628 379 (Chairman Rotorua Community Board)
Sandra Goodwin	Secretary	3628 865
Bryan Walford	Treasurer	3628 224
Lyall Beuth	3628 459	Marcel Van Leeuwen 3628 468
Ian Potter	3628 556	Carol Christian-Price 3628 702
Chris Russell	3628 030	Cheryl Lyons 3628 790
Matt Harvey	3628 971	Harm Zuidmeer 3628 178
Mike Vincent	3628 376	Katy Hodgson 3628 857

DISCLAIMER STATEMENT

The views and opinions expressed in this Newsletter are not necessarily those of the LOCA Committee.

Front Cover:

Campbell Ware holds his winning trout caught at the Winter Fishing Competition. It was caught fly-fishing after a 20 minute fight early on the first day of the competition. Campbell won trophies for the Heaviest Adult Male and Best Condition Factor. The trout weighed 5.2kg or 11.46lbs.

For more information about the Winter Fishing Competition please see page 36.

CHAIRMAN'S UPDATE—SEPTEMBER 2014



Greetings from the LOCA committee and a welcome to spring and an update on the past three months at Okareka.

Included in LOCA's submission to the RDC Annual Plan were the following questions: **We are currently paying a fixed targeted rate for water usage of \$214 per annum where usage recorded on the meter is on average more than 50% less. Where is the incentive to save water?**

Answer: In the 2012-2022 long-term plan the targeted rates structure for water supplies was changed

and individual supplies were standardised to the urban rate. Okareka previously had the lowest water rates in the district. The new rate does provide a financial discouragement for excessive use, but also recognises the high costs in providing a water service.

The Okareka Community is interested in participating with RDC to manage freedom camping at Boyes Beach.

Answer: Council resolved to transfer responsibility for collecting "freedom camping" fees to the Okareka Community Association.

As a result we have now finalised an agreement to manage the freedom campers and the estimated annual revenue of approximately \$10,000 will be available for community projects.

After nearly 5 years we have finally received approval from RDC, DOC and Iwi to proceed with the **Walking Track** from Boyes Beach to the DOC camp ground and hope to have funding and a work schedule in place with a suitable contractor in the near future. Some of the funding will come from the revenue from our management of the DOC campground and some of the labour from volunteers.

The **DOC campground** is currently being upgraded in the campervan parking area as a result of erosion since it opened over 2 years ago and we are grateful for the assistance at short notice from local contractor Guy Gaddum. Many thanks Guy.

The **2015 Ultra Marathon** will be held on Waitangi weekend (February 7) and we are meeting shortly with organisers to discuss the impact on the community and visitors etc. The expectation is for 1000 competitors and like last year Boyes Beach will be one of the drink/feed stations but this time it is one of the busiest weekends of the year. It follows on from events at the Blue Lake on both Wellington and Auckland Anniversary weekends. We continue to be concerned at the growing popularity of the area over the summer with the pressure on the roads, lakes, toilets etc and bringing new events, together with the popularity of walking tracks, mountain biking, freedom camping etc.

The Lakes Community Board in association with LOCA and the LTRA have been successful in having RDC agree to the **Transfer Station** for recycling and rubbish being open during the day every day of the year. It will continue to be open the two half days a week (Wednesday and Sunday) for trailers etc and from 8am to 6 pm every day but only for foot access thru a small gate. It was hoped that approval from the Regional Council for an amended Resource Consent would be finalized by now to enable new signage etc to be in place for the fishing season opening on 1st October.

As you can see we will have a busy summer and we are always on the lookout for **VOLUNTEERS** to help out so anyone interested please make contact with Sandra Goodwin. Also as you will see I have been brief with this summary. If you are interested in more detail please make contact with myself or any of the committee. As always we welcome comments on any issues of interest to our residents and property owners.

Geoff Palmer
Chairman

THE LEWIS PLUMBING COMPANY

*Registered Craftsman
Plumbers & Gasfitters*

Ph: (07) 343 9060
57 Tallyho St, Rotorua
jon@lewisplumbing.co.nz
www.lewisplumbing.co.nz

Chris Smith
glass
professionals



CALL 07 348 5038
24 Hour Service

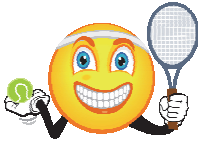
91 Riri Street, Rotorua
info@chrissmithglass.co.nz
www.chrissmithglass.co.nz

24 HOUR
GLASS SERVICE
CALL OUR TEAM
OF PROFESSIONALS

NEW SERVICE
Auto Glass
*All makes.
All models.*

- Splash Backs
- Mirrors
- Frameless Showers
- Window Tinting
- Glass Balustrades
- Window Maintenance
- Retro Fit *Double Glazing*
(to Existing Aluminium & Wooden Joinery)

LAKE OKAREKA TENNIS CLUB



Daylight saving starts 28 September so it is almost time for spring tennis!

Subscriptions 2014/2015 year:

These are due as at 1 October. The new season's subs remain as \$100 for the whole family. The committee believes this is exceptional value for a family membership. Payment is requested into the account of the Club at Westpac Bank account number 03 – 1552 – 0130369 – 00. **It is essential you e-mail confirmation of the deposit** to avoid any unidentified deposits. It is also necessary for you to include in your e-mail current contact details including mail, telephone and e-mail details. Keys will be sent out or made available for collection in early October and the lock to the courts will be changed three weeks later.

Spring coaching for children:

Daylight Saving starts 28 September. Coaching for children starts Friday afternoon 17 October (end week one of term 4) and runs for eight weeks including 24/10 which is Labour Weekend – due to the number of weekends before Christmas. The cost is determined by the number attending. **Please note numbers for each session may be limited this season** so registration is on a first in basis.

By Friday 10 October could you please:

- ≡ Register your interest
- ≡ Advise the number of children you wish to attend
- ≡ Their age
- ≡ Which session they are likely to attend (4pm to 4.45pm up to 7 years; 4.45pm—5.50 pm up to 9 years and 5.50pm – 7.00pm ten years and over)

Once we have confirmed numbers the cost shall be confirmed and you will, in turn, be asked to confirm the attendance of your child or children.

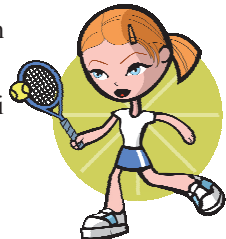
AGM:

This is scheduled for 31 October at 5.30pm.

Weekly Tennis:

Weekly adult tennis starts on Wednesday 16 October from 6.00 pm.

Contacts for the Tennis club: John 362 8282; Hongli 362 8106;
Gert 362 8835 or johnbattersby@xtra.co.nz





The Lake Okareka Volunteer Rural Fire Force

Well, spring is here! Good to see we have made it through winter with relatively few serious call-outs, although we have had a few fire-related incidents which are unusual for this time of the year. This highlights the need for awareness at all times, especially if the wind picks up as was the case recently where a relatively straightforward rubbish burn had the potential to become fairly serious in a short period of time. It is important that the area surrounding rubbish to be burnt should be cleared of all vegetation so the possibility of it spreading is kept to a minimum. This is one of the main conditions when applying for a fire permit. Remember to adhere to all permit conditions.

The Fire Force recently had the opportunity to participate in some live fire training in Ngongotaha and, in the not too distant future, will be participating in some joint training with the Tarawera and Rotoiti fire units. We have also had two joint training sessions with the Civil Defence Team from Rotorua District Council. This provides invaluable experience in not only working together but also understanding how different organisations operate. Please read the notice from Civil Defence (page 9) regarding testing of their mobile alerting system in Okareka on Tuesday, 23 September. This will be carried out in conjunction with the Lake Okareka Fire Force.

We also helped with the Fire and Ice Festival at the Rotorua lakefront back in July. This consisted of two separate days due to inclement weather. On the first occasion, we assisted with the fire walk – not too many burnt toes – and on the second occasion, the bonfire, laser light display and fireworks evening.

Around 5 November, we are going to be holding a community evening for Guy Fawkes. Planning for this event is still in progress and more details will be sent out closer to the time.

On 4 December, a contingent of Lake Okareka firefighters will be attempting the Goat, which is a run from Whakapapa to Turoa ski fields, a distance of some 21 kilometres in alpine terrain. Keep an eye out for us running up the Blue Lake hill as part of our training!

Finally, with Daylight Saving not too far away, please don't forget to check your smoke alarms.

For anyone wanting to contact the Fire Force, please phone me on 362 8874 or go to our website: www.okarekaruralfire.com.

Phil Muldoon
Chief Fire Officer



The boys hard at work at the Fire and Ice Festival!!



VETRO

MEDITERRANEAN FOODS

1131 Amohau Street, Rotorua

Ph: 07 346 0081

Email: jen@vetrorotorua.co.nz

www.vetro.co.nz

**Open 6 days &
7 days over the
summer**



VetroRotorua



**ALL THOSE HARD TO FIND INGREDIENTS
AT EVERYDAY LOW PRICES**



As part of the National Get Ready Week (21 – 27 September) Rotorua Civil Defence will be testing the “Stinger” mobile alerting system in your area on Tuesday 23rd from 6.30pm onwards.

Note: We WILL NOT be evacuating anyone, merely asking you to complete a questionnaire on what you could hear.

Every household will receive a letter with more information prior to the event.

Looking forward to working with you to establish a more resilient community.



Pauline Hitchcock, Emergency Management Coordinator



NEWSLETTER—AUGUST 2014

Welcome to our new children and their families, Lucy Belle with Mum and Dad Melanie and Dave, Ari Dravitzki with Mum and Dad Megan and Dave. Welcome back the Gaddum family with Sylvia. We had a farewell for Nicole Wallace on Friday as she has graduated to Lynmore School. Happy school days Nicole.

The Preschool held it's AGM in June and we have new board members.

We welcome our new board members Stu Wallace Chair, Hamish Marshall Deputy Chair, Rob Trass Treasurer, Vanessa Bowyer Secretary, William Sandle and Shelley Garden General Board Members.

The children are learning about our feelings and appropriate ways to express them at their news time. We have heard from their choice of what makes them sad and what makes them happy, angry, sad and laugh.

We have been enjoying making pasta, pizzas, butterflies, windmills and much more. Many of our learning experiences are developed from the children's own ideas about what they want to learn more about. At Preschool we have a shared opportunity for the group to learn more about both their interests and each others. See Facebook for more on our group learning experiences.

Sustainability project

The children enjoyed the digger coming to Preschool to remove all the planting behind our rear fence. This is a project supported by our families to care for our environment and our community. We will shortly be given some lovely fruit trees that we will be planting. Thank you to the Council for supporting this sustainable project.

Recycle cardboard and paper at Preschool. The bin gets emptied on Wednesdays. Thank you for your support.

Preschool closes on Friday 26th September for the school holidays and re-opens for term four on Monday 13th October. Visit Preschool on our website www.lakeokarekapreschool.co.nz

Teaching Team
Lake Okareka Preschool







A Touch of Elegance

Beauty and Nail Specialist

Waxing

Acrylic Nail Enhancements

Shellac Gel Polish

Lash and Brow Tinting and Shaping



www.atouchofelegancebeauty.co.nz

13 Summit Road

Lake Okareka

ROTORUA

Phone Vana on

07 3628 007

email: atouchofelegance01@gmail.com



TELFER MARINE LIMITED

Rotorua's Largest Range of Boating & Watersports Accessories

Sales & Servicing

All makes and models

Free pick-up/drop off locally

New and used boats

Come in and see our fully qualified technicians



236 Te Ngae Road Rotorua / P : 07 345 9854 E: sean@telfermarine.co.nz

www.telfermarine.co.nz

www.bargainboatbits.co.nz Free Phone 0508 262824

 **YAMAHA**

Buccaneer

LOWRANCE

BRIEN

**Loose
Unit**

Bargain BOAT Bits
(Boating's one business)



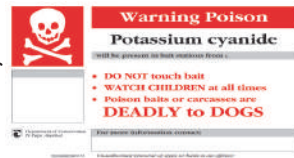
TIKITAPU SCENIC RESERVE PEST CONTROL PROGRAMME

The winter has been a busy time for the Tikitapu Forest and Bird Pest Control Project. Working bees were held to trim and check all the bait lines and stations prior to the bait being put out on the 8th and 9th August. A combination of Pindone pellets and Feratox® capsules, which have proved successful in the past, has been used this year. The bait was topped up on 24th and 25th August and any remaining bait will be removed on the 21st and 22nd September.

Monitoring of rodent and marsupial numbers was done prior to baiting and will be repeated after the stations are cleared. We hope for a better result with the rodent numbers than we achieved last year.

The caution period for the reserve will continue until the signs are taken down, approximately 4 months after the stations are cleared.

This time is required for the complete decomposition of the carcasses and degradation of the bait. Until the signs are removed please do not touch any carcasses and remember to keep dogs out of the reserve at all times.



New volunteers are always welcome and if anyone is interested in being involved in the pest control programme, or going on the roster to check the Nature and Mistletoe walks please let me know.

Frances Blakely

Phone: 362 8480 or email: blakelys@xtra.co.nz

Bird Counts in Tikitapu Scenic Reserve

In conjunction with the pest control programme, Forest and Bird carries out an annual survey of birds in the Tikitapu Scenic Reserve. The number of birds seen and/or heard are recorded at 20 pre-defined locations throughout the reserve using the 5-minute bird count methodology.

Tui has been the most frequently recorded bird in the last three years. The report for the 2013 count is available at <http://www.forestandbird.org.nz/branches/rotorua>.

Another count will be carried out in November this year. New volunteers are welcome. If you are interested in helping please email Forest and Bird at: rotorua.branch@forestandbird.org.nz. **Margaret Dick ph 357 2024** is the contact for the bird count.



GARDEN BIRD SURVEY

Many thanks to the ten households who participated in the inaugural garden bird survey. For each species on the survey form, the table below gives:

- ≡ Number of gardens where observed
- ≡ Minimum number observed in any one garden
- ≡ Maximum number observed in any one garden

Species	Number of gardens where seen	Minimum count for a garden	Maximum count for a garden
Tui	8	1	8
Fantail	8	1	6
Blackbird	8	1	4
Bellbird	8	1	3
House Sparrow	7	3	100
Silvereye	6	1	30
Kereru	6	1	3
Myna	5	2	14
Starling	5	1	4
Chaffinch	4	1	6
Greenfinch	3	1	3
Grey Warbler	2	1	3
Goldfinch	2	2	2
Dunnock	2	1	2
Magpie	2	1	2
Black-backed gull	2	1	1
Song Thrush	2	1	1
Red-billed Gull	1	1	1
Eastern Rosella	1	1	1
Yellowhammer	1	1	1
Rock Pigeon	0	0	0
Welcome Swallow	0	0	0

Highlights:

- ≡ Tui, Fantail, Blackbird and Bellbird were most common in terms of number of gardens where they were seen.
- ≡ House Sparrow, Silvereye, and Myna were the most common in terms of numbers seen in any one garden. The high numbers occurred in gardens where food was provided. Numbers observed were lower where food was not provided.
- ≡ Kereru were seen in 6 of the 10 gardens.
- ≡ No Welcome Swallow were seen. They are common in the summer and breed along the walkway but seem to leave Okareka in the winter months.

The preliminary results from the nationwide survey can be found at:

<http://www.landcareresearch.co.nz/science/plants-animals-fungi/animals/birds/garden-bird-surveys>. Thank you to Jenny Grace for analysing the results and preparing this article.



SEPTEMBER 2014 REPORT

It's great to see that spring is here, and the days are gradually getting longer – and warmer. Landcare Okareka volunteers have been busy over the past few months undertaking planting in several areas around Lake Okareka

environs.

The first planting carried out was in the Taumaihi reserve at the end of Acacia Road. We are planting in the areas around the edge of the mown part of the reserve where many weeds such as jasmine, mountbretia, ivy and so on have been removed in the past 15 months or so. All of this work is with the support of local Department of Conservation staff and falls under the Weedbuster programme. We have also had the support and assistance of Mon, the Manager of Lebuia Lake House. He has given us vehicle access on Working Bee days. Thank you Mon! Thanks also to the management of Lebuia for keeping the grass on the mown part of the reserve area mowed over the warmer months.

Other areas planted have been at the Department of Conservation Millar Road camp entrance – we hope that the plants will survive the wallabies in the area – we have tried to choose plant varieties that are less appetising to wallabies! More planting has happened in the Mistletoe track area and in the back of the Tikitapu Reseve planting (opposite Benn Road) – a joint project with Rotorua Forest & Bird members, Rotorua Botanical Society members and Landcare Okareka volunteers.

There are still more plantings to be done – up at Lake Tikitapu, also some infill planting at the pump station area, and some pohutukawas to go down on the walkway, to replace some kowhai that have just not grown at all. We also have some more Cyperus ustulatus to put in to protect lake shore line from erosion near the shade structure.

We have some repairs to try to make to the surface of the walkway, after the very heavy rain fall we got in August. We also have some drainage to install in the walkway track in the area beyond Silver Beach.

We will be holding a litter pick up around Lake Okareka to tie in with Keep New Zealand Beautiful Clean Up week on Saturday 13th September from 9am, meeting at the Lake Okareka Community Hall.

In the meantime, keep an eye out for Landcare Okareka sign boards advertising the working bees. Everyone is most welcome to come along and help. If you have any questions or want further information please contact Sandra 362 8865 or email sgoodwin@actrix.co.nz



Thompson Marine Ltd

Rotorua's Specialist Mercury Dealer

Sales & Service

All makes & models of
outboard motors
Mer cruiser stern drives

Marine Accessories

Including Life Jackets &
Ski Vests
Skis
Marine Electronics, etc

We are looking to buy or sell on behalf - good second hand boats.

Guaranteed workmanship from fully qualified marine technicians

seaboss
ALUMINIUM BOATS

MERCURY
OUTBOARDS

MERCURY
MerCruiser
STERN DRIVES & INBOARDS



31 Fairy Springs Road | PO Box 1337 Rotorua

P : 07 348 4997 or 0800 95 95 90 | F : 07 346 0037 | E : thompsonmarine@seaboss.co.nz



Corner Old Taupo & Sunset Roads

PO Box 1337 Rotorua

P : 07 348 4441 | F : 07 349 2944

info@thompsonmowers.co.nz

www.thompsonmowers.co.nz

- Chainsaws
- Lawnmowers
- Reel Mowers
- Ride-On Mowers
- Line Trimmers
- Scrub Cutters
- Forestry Pruning Equipment
- Rotary Hoes
- Generators
- Blower / Vacs
- Water Blasters & Pumps
- Splitters & Chippers

Sales & Service of Outdoor Power Equipment
Rotorua Agents for Husqvarna Outdoor Power Equipment,
including Chainsaws, Trimmers, Ride On Mowers, and more
Also stock and service Lawnmaster, Masport and Honda Power
products, Briggs & Stratton and Robin Engines



We service, sharpen and repair all makes and models

Thompson Trimming
Phone 348 4441

Upholstery | Repairs | Furniture Recovering | Boat Canopies
Squabs | Hull Linings | Forestry Clothing, chaps, pouches, etc.

RAT BAIT AND BAIT STATIONS—SPRING 2014

As I am sure most of you will be aware, spring has now arrived. The birds are beginning to build nests and now is the time to get into rat baiting – as some of you have already done, recently. Thank you to everyone who has purchased rat bait stations over the past 12 months.

Ditrac rat bait provided by Bay of Plenty Regional Council is once again available to individual property owners, to support enhancing the biodiversity at Lake Okareka. We are especially interested in getting even more lakeside properties involved with rat bait stations. We believe that the results Lake Tarawera are getting with the increase in numbers of dab chicks could be due in part to their successful rat bait programme. They have many lakeside properties there involved. If you are interested, but maybe feel that you do not come to your property often enough to keep the bait station full, please contact us. We may be able to work out a partnering system with someone who lives here permanently and is prepared to keep your bait station filled.

Ditrac is a poison, and care must be taken when using it.

How to Use Ditrac Bait:

It is recommended that bait be fed in a type of bait station, fitted with a locating rod, that does not allow the rats to carry baits away to be stored. The baits have holes in them and they thread onto the rod. Rats and mice eat the bait in the bait station. The bait station protects the bait from the weather. It means also that bait cannot be eaten by non-target species such as birds, dogs, cats and children.

Bait stations are available by contacting Mike & Sandra Goodwin 362 8865 or email sgoodwin@actrix.co.nz. We have a new type of lockable bait station, like a small suitcase. They also have locating pins for the bait. Cost of these is \$20.

Do you have a bait station already? That's great if you do. When you collect your bait you will need to confirm your name and address and the address of the bait station. We need to update our data base about bait stations and where they are located throughout Okareka – and many thanks to everyone who has done this so far.

How do I get bait now? Bait is available in labelled, zip lock bags, containing 12 rat baits. This is enough bait to fill one bait station 2 times during a month. Bait stations should usually not be filled more than twice during a month, otherwise you are wasting bait and feeding potentially dead rats and mice.

If you require the bait or a lockable bait station for \$20, please contact Mike & Sandra Goodwin phone 362 8865, 2 Pryce Road or Rod Stace phone 362 8523, 30 Summit Road. Please phone first to arrange a suitable time to collect bait or a bait station.

Put More Spring In Your Step



Are you feeling achy, tired and generally under par?

Would you like to feel happier and more energetic?

Herman the Turtle at Tarawera has come out of hibernation bang on time for spring. This means its time for you to get ready for a long, hot summer, with a little extra TLC at Careem. Get your body sorted now, so you can feel younger, healthier and more alive.

Treatments include:

Therapeutic Massage
Rejuvenating Facials
Beauty Services
Pick-Me-Up-Herbal Tonics
Refreshing Detox Days
Rejuvenating Pamper Packages ...and more!

Call Carol NOW and start looking forward to a great summer!



CAREEM
 WELLNESS SPA

Carol Bannister, Careem Wellness Spa
 89 Acacia Rd, Lake Okareka, Rotorua ph 07-362 8878
careemspa@gmail.com www.careem.co.nz

ACACIA ROAD LAKEFRONT AREA

Some of you will no doubt have noticed that the fence has now been shifted at the lake front area on Acacia Road to take in the large liquid amber shade tree. Thank you to Harm Zuidmeer and his team of helpers for undertaking that task. Hopefully this will give a larger area for locals and visitors and their dogs to play and sit safely. It is still part of the dog exercise area.

A large green plastic dog and dispenser of plastic dog pooh bags has been installed at the Lakefront area. The green plastic dog has been provided by Rotorua District Council and the plastic dog pooh bag dispenser has been provided by Lake Okareka Community Assn (LOCA). Please use these facilities for the purpose for which they were designed. We hope that these will prove useful for the many dog owners who use this area.

We also hope to get some more seating for the newly fenced out area. If you are interested in helping fund one or two new seats please contact Sandra 362 8865 or Geoff 3628 379.





**first
national**
REAL ESTATE

Rotorua

**Thinking of Selling
then talk to
someone compelling**

**who understands the need
to believe in the area
as well as your home**

**“Living at and Loving the Lakes
for the past 36 years”**

**Call Cathy today for your
no obligation Free Appraisal.**

Cathy Lines

Lake Tarawera & Lake Okareka

07 362 8112

021 033 7707

cathy@rotoruaproperty.co.nz



NEIGHBOURHOOD SUPPORT/CIVIL DEFENCE

The recent Neighbours Lunch public meeting held at the Okareka Hall attracted quite a few interested local residents. Bruce Quedley from Rotorua Neighbourhood Support and Pauline Hitchcock the Civil Defence Co-ordinator spoke on the roles of their organisations and encouraged people to be prepared for any emergency. Information material was available to take away and the opportunity was taken to update peoples' contact details.

LOCA provided a sausage sizzle and refreshments.

The aim is to collate a central register of Okareka residents and family details in order that should a disaster happen the co-ordinators will have a better knowledge of who may need assistance. At this stage we have a number of residents acting as street co-ordinators who are responsible for looking after a few houses in their vicinity. As a result of the meeting more people have put their hand up to act in this capacity in their street. However in order that we can cover all of Okareka we need more people to act as co-ordinator in their street. If you are interested please contact me.

If you haven't had an e-mail communication from me the Administrator in the last couple of weeks and you have been getting notices in the past, it means I don't have your current e-mail address. Please send me an e-mail so that I can update our data base. Of course we welcome any other residents who would like to be in the loop; just send me an e-mail.

Lyall Beuth
Phone: 3628 459



**KANGA
EARTHWORKS**

• Dig • Drill • Flatten • Fill • Trench

Versatile Mini Loader

Peter Harding
Rotorua Operator

Ph: 362 8108
Mob: 0275 628 108
Email: kanga@kinect.co.nz

Norman lives at **Lake Okareka** now,
And he is always ready to listen and offer
his advice with any of your property
transactions.

NORMAN DONALD areinz (Licensed REAA2008)

07 3628056, 0274950189

norman@2lakes.co.nz



bookabach

Recognise this logo? It is the most
up to date and

forward thinking website for

HOLIDAY RENTALS

Norman Donald

with his

**2LAKES HOLIDAY
RENTALS**

is offering you the
opportunity to have him list
and manage your property
(with no Bookabach annual sub fee!)

norman@2lakes.co.nz

Ray White®

1274 Eruera Street, PO Box 693, Rotorua, New Zealand

Licensed Agent REAA 2008

Phone 07 348 8333 Fax 07 348 8332

AMTOS Realty Services Limited

TIMM'S POSSUM TRAPS—SEPTEMBER 2014

DO you currently have one of the loaned yellow Timm's possum traps??

There are a few people with traps we have not heard from in a while – can you please let us know if you still have a loan trap and if you are using it, what you have been catching?

These Bay of Plenty Regional Council funded Timm's possum traps, are available on loan to any Lake Okareka residents, if you contact Sandra & Mike Goodwin 362 8865. The Lake Okareka community has 10 traps which were funded as “loan traps” by Bay of Plenty Regional Council. These traps have been borrowed at various times by members of the community. If you are having possum problems – maybe eating fruit or flowers or they are making a nuisance of themselves at night – and you would like to borrow a Timm's trap, give us a call.

If you are not familiar with the “Timm's trap”, we will provide you with some instructions about how to use the traps. We will also give you some advice about what seems to work best as “bait” - such as apple with cinnamon, or apple and peanut butter. If you can, keep a note of any possums caught and pass that on to us when you return the trap. We like to know for our records what is being caught around the place and we can also pass that on to the Regional Council.



For more information or to borrow a trap, please contact Mike and Sandra Goodwin 362 8865.

 <p>CAPERS EPICUREAN</p>	<p>Breakfast Lunch Dinner</p> <p>Ph 348 8818 www.Capers.co.nz</p>
--	--

TAX MADE SIMPLE

FREE NO OBLIGATION CONSULTATION TO SEE HOW WE CAN HELP YOUR BUSINESS GROW.

CONTINUED SUPPORT AND FREE ONE HOUR CONSULTATIONS EVERY MONTH ONCE YOU HAVE JOINED.

WE OFFER SUPPORT, ADVICE AND ASSISTANCE RELEVANT TO YOUR ACCOUNTING + TAXATION NEEDS.

- **SMALL TO MEDIUM BUSINESSES • SELF EMPLOYED**
- **INVESTMENT PROPERTIES**

www.tacts.co.nz

ph:073628902 | e:chris@tacts.co.nz

fax:073628903 | m:0272102035

FRIENDLY • FOCUSED • FLEXIBLE



Event Information September 2014 – January 2015

Rotorua District Council manages all reserve booking for events that happen in Rotorua. They also meet regularly with the BOP Regional Council to discuss and coordinate events happening close to and on all of the lakes in the region. Both organisations appreciate the impact events can have on the location they are held, both positive and negative. If you have feedback that you would like to offer or you wish to discuss events happening in your area, please contact the Events Manager on 073518654 or by emailing major.events@rdc.govt.nz

Start Date	End Date	Event Name	Location
27/09/14	29/09/14	Junior U23 Camp	Blue Lake
12/10/14	12/10/14	BOP Rowing Association	Blue Lake
17/10/14	19/10/14	Canoe Racing NZ Regatta	Blue Lake
31/10/14	3/11/14	Regional Waka Ama	Blue Lake
02/11/14	02/11/14	Tikitapu Off Road Trail Runs	Blue Lake (Reserve only)
05/12/14	07/12/14	Canoe Racing NZ Regatta	Blue Lake
08/12/14	10/12/14	Junior U23 Camp	Blue Lake
13/12/14	13/12/14	Rotorua Half Ironman	Blue Lake
17/1/15	18/1/15	Blue Lake Rowing Regatta	Blue Lake & DOC Reserve
24/1/15	25/1/15	Blue Lake Multisport Festival	Blue Lake

LAKE OKAREKA TEE SHIRTS

Last of the line are for sale (childrens \$15, adults \$20). Buy 2 save 10%, buy 3 save 15%. Available sizes shown below:

Type	Size	Colour	Quantity
Child	4 year old	mid blue	1
Child	10 year old	khaki	2
Child	12 year old	red	1
Adult	small	khaki	1
Adult	small	red	3
Adult	small	navy	1
Adult	medium	red	1
Adult	large	red	1
Adult	XL	red	3
Adult	XL	grey	2
Adult	2XL	grey	2
Adult	2XL	navy	2
Adult	3XL	navy	1
Adult	3XL	khaki	1



Also available are sets of 10 postcards for \$5—the same picture shown on the cover of the phone book. Please contact Carol on 3628 702 or email carolcp@vodafone.co.nz if you are interested in the tee shirts or postcards.

Anticoagulant Rodenticide Poisoning in Dogs and Cats (abbreviated from www.petmd.com)

Following some recent concerns about the risks to pets posed by the poisoning operations taking place at Lake Okareka, I have been asked to outline a few points.

In a previous article I talked about treating all pesticides with care and I stressed the importance of following all label instructions on pesticide containers. If the instructions are followed, along with a healthy dose of “common sense”, the risks to pets (and humans) are minimal.

The Tikitapu Forest and Bird Care Group are using Cyanide and Pindone to control possums and rats within part of the Lake Tikitapu Scenic Reserve. Though dogs are not permitted in this area, some people living nearby may be concerned about the safety of their pets. Likewise Landcare Okareka are controlling predators (rats and stoats) around the lake margin, via a network of bait stations and kill traps. Some of the bait stations will be quite close to houses. The bait that is being used is called Ditrac.

Ditrac (which contains Diphacinone) and Pindone are both anticoagulants.

Because Landcare Okareka’s rat bait stations are “dog-proof” and the bait is held on a wire inside the bait station (so that rats cannot remove them), there is almost no direct risk of a dog or cat eating the bait. Animals that scavenge dead or dying rats may however be exposed to a slight risk through “Secondary Poisoning”. A dog or a cat would need to eat several dead or dying rats containing anticoagulant poison to become ill.

Dogs and cats that have anticoagulant poisoning may not show signs of poisoning for several days, but as the poison begins to take effect, the dog or cat will become weak and lethargic.

Symptoms

Here are some of the most common symptoms of anticoagulant poisoning:

- ≡ Weak, wobbly, unstable
- ≡ Blood in vomit or stools
- ≡ Bleeding from the gums, nose or rectum
- ≡ Bruises under the skin
- ≡ Swelling of the belly, due to accumulation of blood in the abdomen
- ≡ Difficulty in breathing

If you suspect that your dog or cat has come into contact with rat poison, and you are seeing some of the symptoms listed above, take it to a veterinarian. Do not induce vomiting unless you have been advised to do so by your veterinarian.

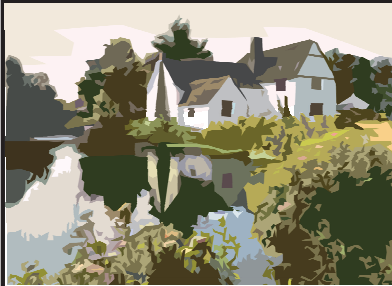
Treatment

If your dog or cat is suffering from anticoagulant poisoning, the treatment will involve administering fresh whole blood, or frozen plasma, and Vitamin K, (which is necessary for normal blood clotting)

Prevention

- ≡ Take note of poison warning signs and do what they say
- ≡ Always follow the label instructions when using any pesticide
- ≡ All rat poisons must only be applied via bait stations to prevent pets from directly accessing the bait (the most common cause of anticoagulant poisoning in dogs is where they access and eat the bait directly)
- ≡ Store all pesticides in their original containers (with the label intact), locked away from pets and CHILDREN.
- ≡ Feed you pets well and don't allow them to wander.
- ≡ Watch for signs of ill health in your pets and contact a vet if you are concerned.

Dale Williams
Land Management Officer
Bay of Plenty Regional Council



INVESTING IN PROPERTY?

We offer a full range of
accounting services
for all sized businesses

Be sure to call us to discuss

- ≡ Ownership structures
- ≡ Tax deductibility of expenses
- ≡ Mortgage Security & Tax implications

MACMILLAN ACCOUNTANTS

31 White Street, Rotorua Phone 350 1018

Holiday home rentals made easy.



*...it's all
taken care of*

0800 42 22 42 | bachcare.co.nz



REGISTERED PROPERTY VALUERS Since 1974

- Commercial & Industrial
- Residential (including insurance)
- Lakes
- Lifestyle & Rural

Trinity House, 1268 Haupapa Street, Rotorua
PO Box 2081

ph: 07 347 6001 email: info@CGJ.co.nz
www.valuersrotorua.com

BOATS LEFT AT ACACIA ROAD LAKEFRONT RESERVE

Do you own either of the two boats that have been left on the Acacia Road lakefront reserve?

One is an orange hulled laser on a small trailer and the other is a Turbocat. Neither of these boats have moved from the reserve, since before the end of last summer. Unfortunately during the time from the end of summer until now, the grass has grown up around them and the area looks very untidy. The Castlecorp mowing guys do not shift anything that is left on the reserve to mow properly – they just mow around them. These 2 boats have recently been moved to allow the grass to be mowed when the mowers come next time. It would be best if these boats that are not being used at the moment, could be taken back to their homes to be stored until summer arrives.

No problem with the waka ama that is there, as it is used very regularly – and no problem with small boats being left in this area over summer, when they are being used regularly.

LOCA Committee


WINDOW CLEAN AND MORE ROTORUA

BRUCE FINLAY

M: 021812989

E: nbfinlay@gmail.com

Address: 12 Millar Road, Lake Okareka





ROTORUA

175 Okareka Loop Road
RD5, Rotorua



BRIAN MOORE

Ph: 362 8576

Mobile: 021 741 446



LAKE TARAWERA PLAYCENTRE

Lake Tarawera Playcentre is situated at 10 Alexander Road, and during term time we have sessions on Monday and Thursday 9.30 am – 12.00 pm. We are a parent-lead early childhood centre for children from birth to age six.

Another busy couple of months for us at playcentre. Our children as usual have been making the most of our lovely setting. Despite some cold mornings, our children have enjoyed water play in the sandpit making Lake Tarawera and pretending the mountain erupts. Face painting has been a favourite too, children enjoy mixing up different colours and changing their own looks or their friends. This term we had a visit from a group of families from Kotou to one of our Monday sessions. They all had a fantastic time and enjoyed the nice warm scones prepared during the session.

Our main fundraising event is coming soon; it is traditional for our playcentre to have a stall at Lake Tarawera spring fair. Come and support us on the 26th of October. There will be jumble to get great bargains from, delicious cakes and baking, and some yummy food.

If you would like to know more about us, come by and join us for a cup of coffee, or feel free to contact us by email tarawera.playcentre@gmail.com or phone us at 362 8748 or at 362 8055 during session times.



Thomas and Ryker making scones



Hunter, Francisca, Thomas and Jake



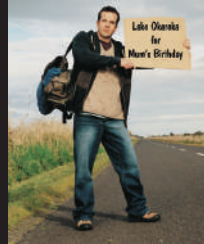
In sandpit from left to right Eva, Yasmin, Ryker, Fergus, Francisca and Karen



Coco face painted by Francisca and Lauren at the back



Lauren showing her beautiful face painted, Anjoescha at the back in the baby bouncer



MARKETING IS EVERYTHING

If you are considering selling, call me to discuss the best method of marketing your property to take advantage of current market conditions. I am committed to maximising the value of my clients' real estate assets.

For totally professional service, call me any time.

Jenny Donne

M 027 385 0566

B 07 349 5356

jenny.donne@bayleys.co.nz

Success Realty Limited, Bayleys,
Licensed under the REA Act 2008



LAKE OKAREKA COMMUNITY TELEPHONE DIRECTORY

There is a new telephone directory coming out very soon. If you know of anyone not yet in it and wants to be or anyone in it who needs to change their details, please contact Carol on 3628 702 or email carolcp@vodafone.co.nz.



At the rear of the phone book there is a section called "Local Community Services" for tradespeople to list their services eg accommodation, electricians, plumbers etc.



If anyone wants to add their details please contact Carol on 3628 702 or email carolcp@vodafone.co.nz. There is no charge for this. All information is required by 1st October 2014.



LAKE OKAREKA FISHING CLUB

The Lake Okareka Fishing Club's winter Tournament was our best ever with 93 entries and 88 fish weighed in. Our sincere congratulations to Campbell Ware (novice fisherman) who caught the largest recorded trout (known to Lake Okareka Fishing Club) in Lake Okareka. At 5.2kg (11.46lbs) this is truly a trophy catch and well deserving of the taxidermy treatment!! The achievement was reported in both the Daily Post and Waikato Times.

Campbell's catch presents a new challenge to all anglers for the summer competition—dates for this will be advised in the December 2014 newsletter.

Many thanks to VIP Realty (Dave Umbers) for sponsoring this tournament and also to Telfer Marine (Sean Bowyer) and NZ Fishing.com (Doug Stevens) for supplying prizes. Also thanks to our weigh masters John Herbert, Jeremy Cox and Eben Herbert.



Other prize winners:

Biggest Bag Individual

Biggest Bag Team

Biggest Bag Family

Biggest Bag Junior

Heaviest Trout – Adult Male

Heaviest Trout – Adult Female

Heaviest Trout – Junior

Best Condition Factor

John Herbert—12 fish

Team Herbert—16 fish

Red Setter—12 fish

Liam Gatenby—4 fish (5.88kg)

Campbell Ware—5.2kg

Jo Sturme—1.63kg

Emma Phibbs—2.21kg

Campbell Ware—62.47







CLASSIFIED ADVERTISEMENTS

Free to Good Home—Upright Piano Justin Browne make - London Iron Frame. Old with a few "blemishes" but a good sound. One pedal needs to be brazed back on. Have a receipt from major overhaul (nearly \$600) done in 1990. Heavy to move. Will need group of strong people. Phone Liz and Peter Harding on 3628 108.

Wanted to buy self draining kayak—suitable for children. Contact Heather Waldegrave on 07 578 8486, or email-bhbm.walde@xtra.co.nz.

For Sale Boat Shed—registered. Accessed from Calder Rd. All enquiries to **Don on 0274 988 912**

My name is Olivia Burman and I live out at Lake Okareka. I am looking for **casual babysitting or weekend day nannying/ babysitting**. I currently work part time at Red Stag Timber Ltd. Call me on 3628 701 or 021 0644410. Reference checks available too.

Are Wasp Nests a Problem for You?

If you can locate the nest, we can treat it - at NO cost. This is a community service offered by Landcare Okareka, with chemicals funded from donations received by the group—**phone Mike Goodwin 3628 865**.

FREE—Marque available for community events. **Phone Cathy Lines**, Licensed Salesperson, Okareka & Tarawera Specialist. First National Real Estate. Mob: 021 033 7707 or AH: 07 3628 112.

Sharpen your chainsaw on my electric grinding gadget for free or I will do it for \$5—**phone Bryan on 3628 224**.

Pet Feeding Services - Pet feeding services over the holiday season and throughout the year, \$7 per visit includes indoor plants watered and mail collected. Limited boarding pens may be available—**phone Carol on 3628 702**.

Heather Horton (Artist) - Watercolours, Oils, Pastels and lead-lighting work can be seen in the studio. Works are for sale, or can be ordered—**phone 3628 165**.

Trees felled for free - Conditions apply—**phone Chris 3628 679 or Peter 3628 108**.

Mobile Library visits every 2nd Monday at the bus stop 19 Loop Road from 3.25pm to 4.10pm.

Trays made of recycled rimu - three sizes: 270x375 \$30, 310x450 \$40, 360x510 \$50 - **phone Bryan on 3628 224**.

Dry Blue Gum—only \$80 per m3 delivered to Lake Okareka/Lake Tarawera. Minimum of 2m3 for free delivery. **Phone Ngaire 345 7488 or 027 460 7056**.

BK Transfers and Shuttles—24 hours shuttle service and personalized service to Auckland, Hamilton, Tauranga, Taupo and Rotorua cities/airports. **Phone Graeme 3628 867 or 027 3628 867**.

House Cleaner Available—hourly rate. Ovens, ironing, windows. Anything you need cleaned. **Call Jenny 3628 063**.



Aloha. It feels right to use that greeting, having just returned from a wonderful 3 week rest and rejuvenation break in Hawaii, visiting the islands of Oahu, Kauai, Maui and Molokai... but I will share more about Hawaii in the next edition.

The destination on everyone's radar at the moment is Europe and the UK. Now is the perfect time to start looking at what's on offer and there is plenty of choice. The first round of earlybird airfares have been released as well as specials on cruises and coach holidays.

Our Europe and UK showcase is being held on Tue 21 October from 5:30pm to 8:00pm at the Millennium Hotel. It is a chance for you to come along and find out more about river and ocean cruising, coach holidays, walking and cycle tours, car rental, adventure style breaks and of course airfares and stopovers. We bring the experts down from Auckland for one night only... Just call or email me to RSVP - donnas@hot.co.nz or tel 348 4152.

Looking forward to helping you plan your best holiday ever. Donna Soler



Rotorua | Cnr Fenton & Eruera Sts | 07 348 4152 | donnas@hot.co.nz